

CERTIFICATE OF LOCATION OF GOVERNMENT CORNER

County of Anoka

State of Minnesota

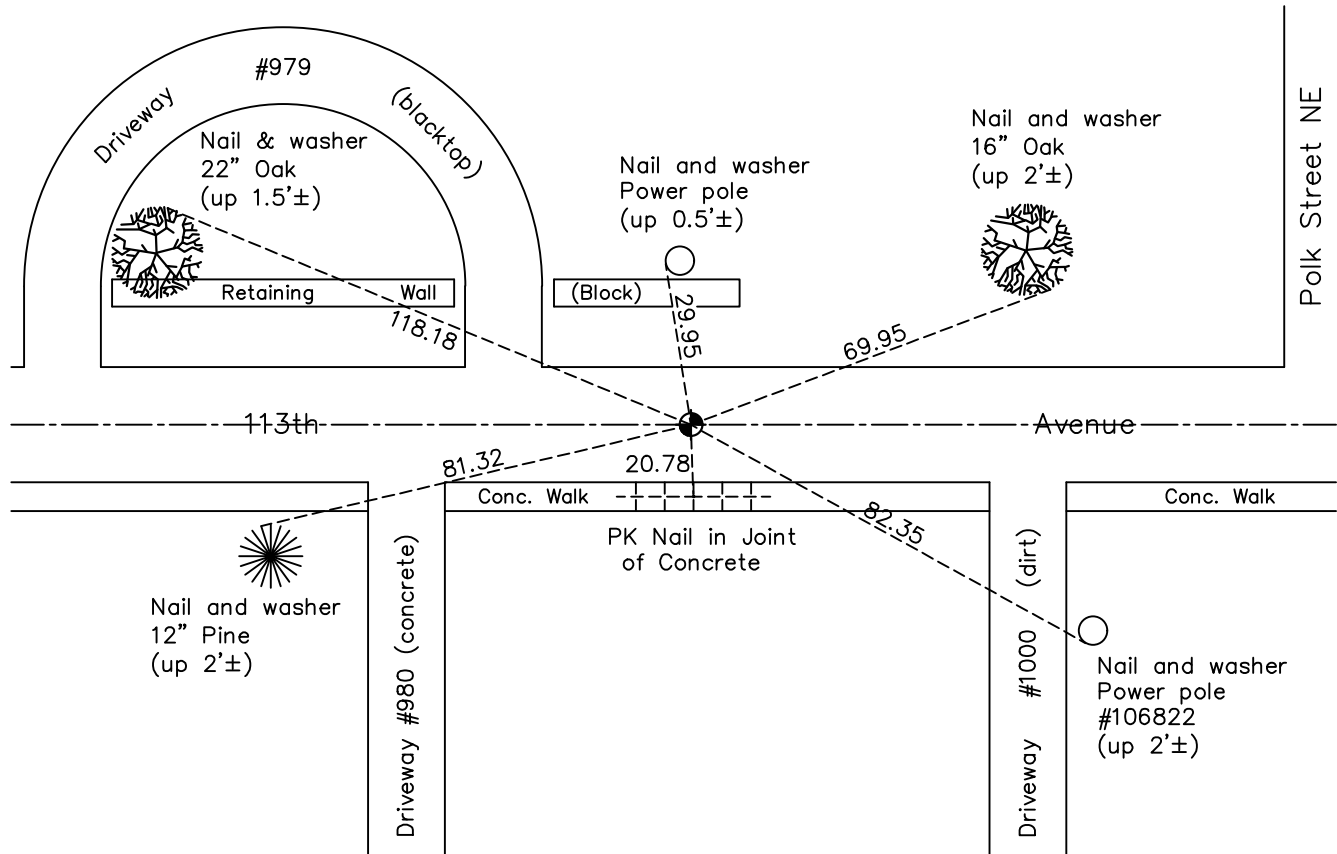
East 1/4 Corner of Sec. 18 Township 31 Range 23

On the 9th day of June, 1965, the described corner was evidenced by a 1/2" iron pipe

and to perpetuate the location of said corner, at the exact location thereof, a permanent marker was placed consisting of a cast iron monument

AND on the 17th day of May, 2022, said permanent marker was found down 0.2'± and the ties were updated

Updated reference ties are as shown below.



Revision Date
7/14/2022

N.A.D. 1983 Coordinates
(1996 Adjustment)

County Project Coordinates	
Northing	<u>151112.4887</u>
Easting	<u>505501.8947</u>
Date	<u>9/03/98</u>

I hereby certify that this United States public land survey monument record is correct and complete to the best of my knowledge and belief.

David Zieglmeier Date 2/8/23

David Zieglmeier Anoka County Surveyor
 Minnesota License Number 46179

HISTORY OF GOVERNMENT CORNER

Page No. 50

County of Anoka

State of Minnesota

East 1/4 Corner of Sec. 18 Township 31 Range 23

CORNER HISTORY:

September 17, 1963 - Found 3/4" iron pipe down 0.2' in position used in previous ties by Suburban Engineering and Jim Halverson. Updated ties.

June 9, 1964 - Found 1/2" iron pipe and updated ties.

June 9, 1965 - Found 1/2" iron pipe and replaced with a cast iron monument. Updated ties.

July 29, 1968 - Found a cast iron monument and updated ties.

September 6, 1968 - Set cast iron monument flush.

August 30, 1971 - Found cast iron monument and updated ties.

May 15, 1975 - Found cast iron monument and updated ties.

August 30, 1977 - Found cast iron monument and updated ties.

October 24, 1977 - Found cast iron monument and updated ties prior to road construction. Corner to be removed.

June 28, 1978 - Set cast iron monument after road construction and updated ties.

June 4, 1980 - Found cast iron monument and updated ties.

June 19, 1990 - Found cast iron monument and updated ties.

April 18, 1994 - Replaced cast iron monument and updated ties.

June 6, 1995 - Found cast iron monument and updated ties.

September 3, 1998 - Found cast iron monument, established NAD 1983 (1996 adj.) Anoka County project coordinates by static GPS methods and updated ties.

June 22, 2006 - Found cast iron monument and updated ties.

April 22, 2014 - Found cast iron monument, verified position by VRS GPS methods and updated ties.

June 12, 2019 - Found cast iron monument, verified position by VRS GPS methods and updated ties.

May 17, 2022 - Found cast iron monument, verified position by VRS GPS method and updated ties.