

# CERTIFICATE OF LOCATION OF GOVERNMENT CORNER

County of Anoka

State of Minnesota

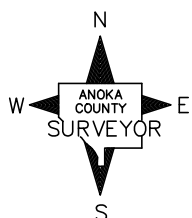
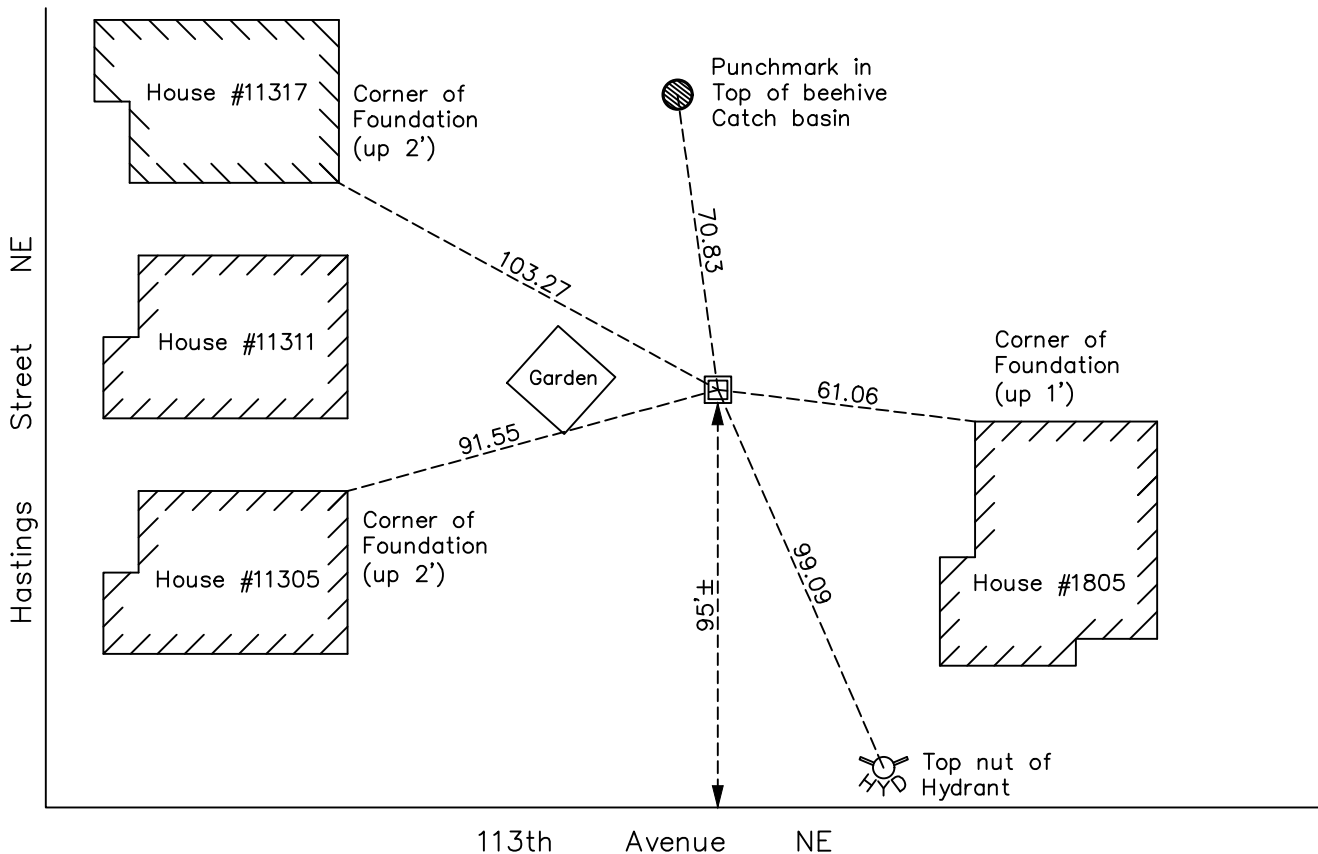
## West 1/4 Corner of Sec. 16 Township 31 Range 23

On the 20th day of May, 1976, the described corner was evidenced by area resurvey

and to perpetuate the location of said corner, at the exact location thereof, a permanent marker was placed consisting of 2"x4' square steel Telspar monument with 'County Surveyor' cap and punchmark

AND on the 17th day of May, 2022, said permanent marker was found at ground and the ties were updated

Updated reference ties are as shown below.



Revision Date  
7/14/2022

N.A.D. 1983 Coordinates  
(1996 Adjustment)

County Project Coordinates	
Northing	<u>151082.0092</u>
Easting	<u>510789.4191</u>
Date	<u>7/09/14</u>

I hereby certify that this United States public land survey monument record is correct and complete to the best of my knowledge and belief.

*David Zieglmeier* Date 2/8/23

David Zieglmeier Anoka County Surveyor  
Minnesota License Number 46179

# HISTORY OF GOVERNMENT CORNER

Page No. 52

County of Anoka

State of Minnesota

## West 1/4 Corner of Sec. 16 Township 31 Range 23

### **CORNER HISTORY:**

October 30, 1964 - Set 1" red and white iron pipe up 4' using area resurvey and established ties to iron pipe.

August 13, 1968 - Found red and white iron pipe and updated ties.

Unknown date - Found red and white iron pipe missing and corner ties gone.

May 20, 1976 - Set red and white iron pipe up 3'± using area resurvey and updated ties.

December 21, 1995 - Found red and white iron pipe missing. Corner location falls in ditch, equidistant and on line between Northwest and Southwest corners of Section 16. No monument in place.

July 9, 2014 - Set 2" x 4' square steel Telspar with 'County Surveyor' punchmarked cap using static GPS methods. Verified position by VRS GPS methods and established ties to Telspar monument.

June 18, 2019 - Found 2" square steel Telspar with punchmarked cap, verified position by VRS GPS methods and updated ties.

May 17, 2022 - Found 2" square steel Telspar with punchmarked cap, verified position by VRS GPS method and updated ties.