

CERTIFICATE OF LOCATION OF GOVERNMENT CORNER

County of Anoka

State of Minnesota

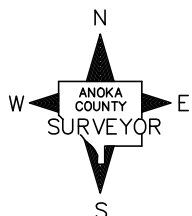
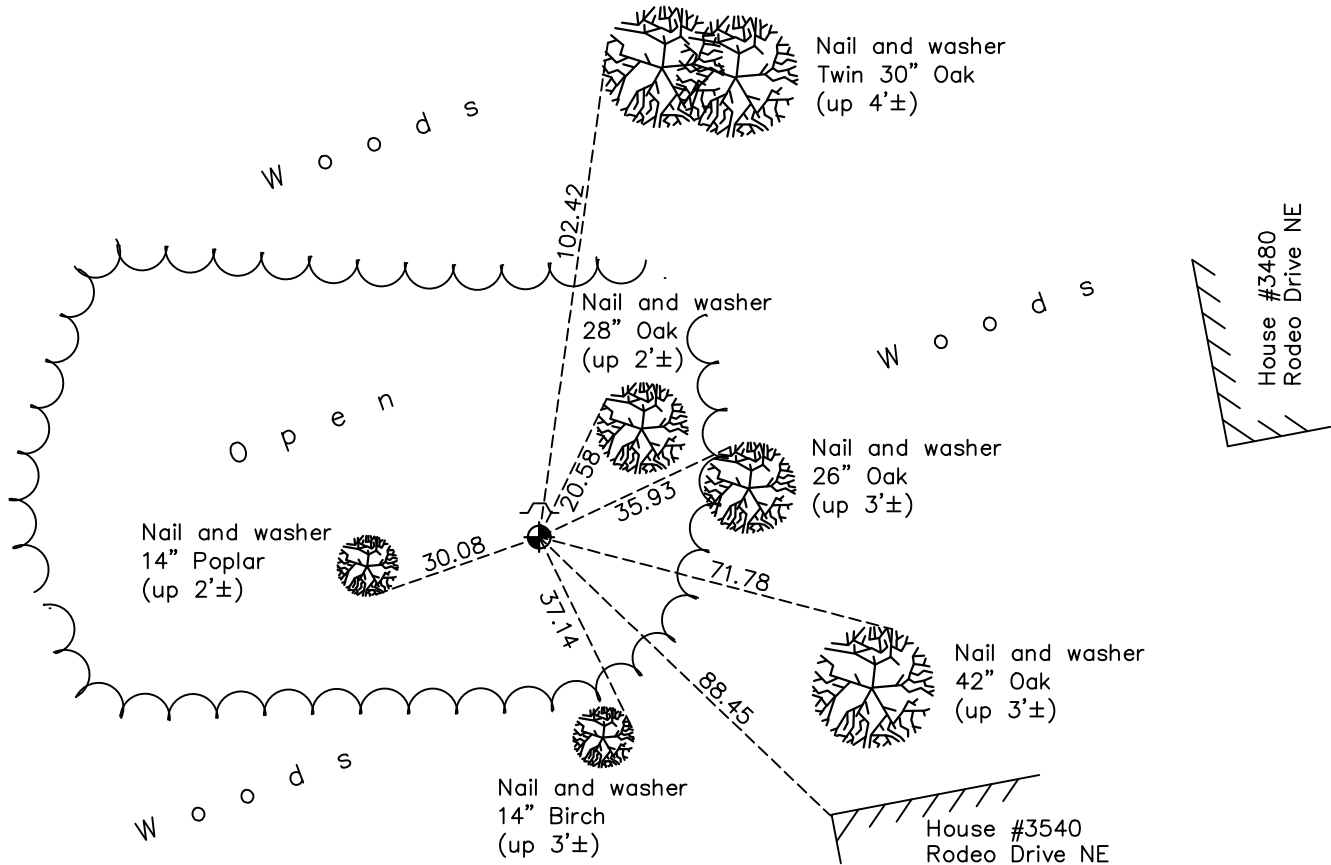
East 1/4 Corner of Sec. 15 Township 31 Range 23

On the 20th day of November, 1964, the described corner was evidenced by area resurvey

and to perpetuate the location of said corner, at the exact location thereof, a permanent marker was placed consisting of a cast iron monument with a sign and post on the north side

AND on the 10th day of January, 2023, said permanent marker was found flush, coordinates were updated using RTK GPS method and the ties were updated

Updated reference ties are as shown below.



Revision Date
1/11/2023

N.A.D. 1983 Coordinates
(2011 Adjustment)

County Project Coordinates	
Northing	<u>150944.788</u>
Easting	<u>521373.785</u>
Date	<u>1/10/2023</u>

I hereby certify that this United States public land survey monument record is correct and complete to the best of my knowledge and belief.

David Zieglmeier Date 2/8/23

David Zieglmeier Anoka County Surveyor
Minnesota License Number 46179

HISTORY OF GOVERNMENT CORNER

Page No. 54

County of Anoka

State of Minnesota

East 1/4 Corner of Sec. 15 Township 31 Range 23

CORNER HISTORY:

November 20, 1964 - Set cast iron monument up 0.1' using area resurvey and established ties to monument.

August 25, 1977 - Found cast iron monument and updated ties.

June 2, 1986 - Found cast iron monument and updated ties.

August 2, 1990 - Found cast iron monument and updated ties.

July 24, 1995 - Found cast iron monument and updated ties.

August 24, 1999 - Found cast iron monument, established NAD 1983 (1996 adj.) Anoka County project coordinates by static GPS methods and updated ties.

July 10, 2006 - Found cast iron monument and updated ties.

May 20, 2014 - Found cast iron monument and updated ties.

June 19, 2019 - Found cast iron monument and updated ties.

May 5, 2022 - Found cast iron monument, verified position by VRS GPS method and updated ties.

January 10, 2023 - Found CIM, position verified by RTK GPS and the ties were reviewed and updated. Position required updated coordinates. Previous Coordinates NAD 1983 (1996 adj) Northing 150944.974; Easting 521373.806