

CERTIFICATE OF LOCATION OF GOVERNMENT CORNER

County of Anoka

State of Minnesota

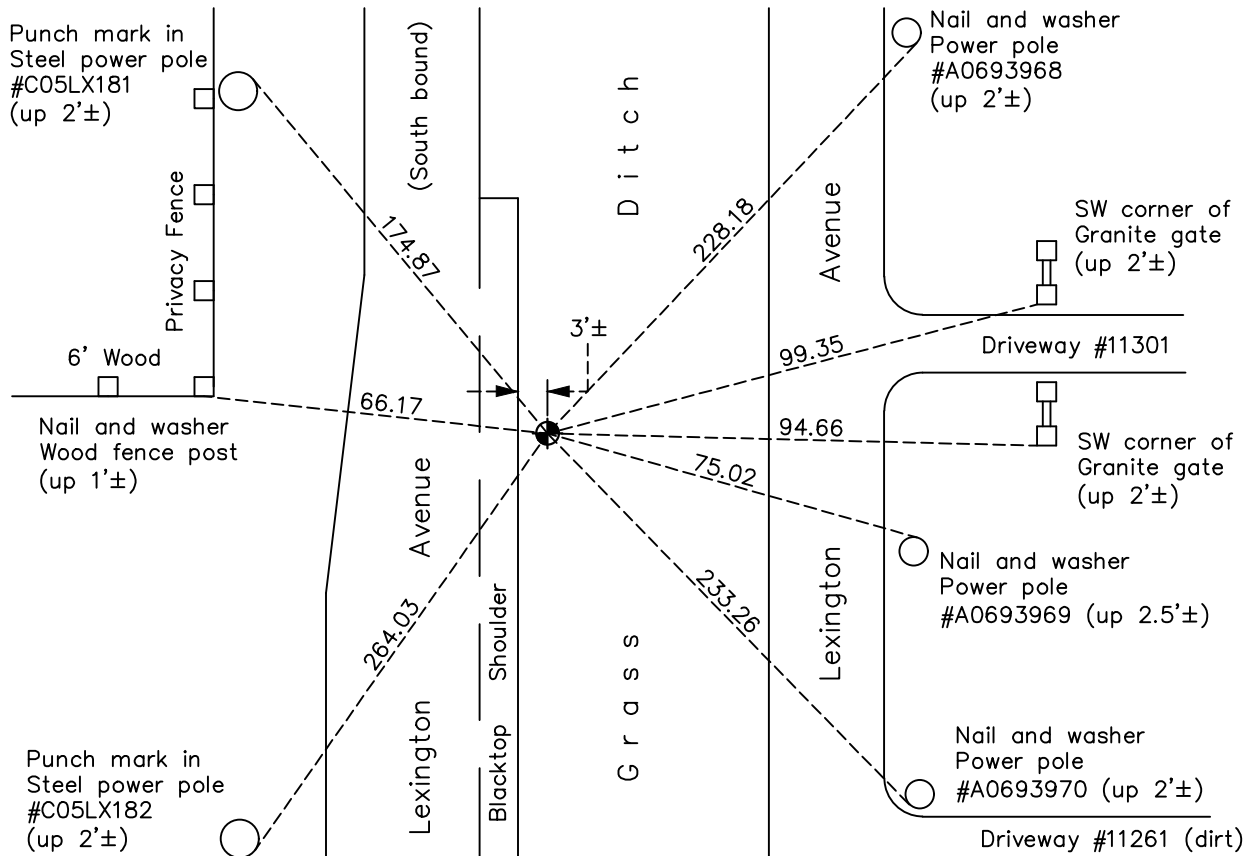
East 1/4 Corner of Sec. 14 Township 31 Range 23

On the 19th day of November, 1964, the described corner was evidenced by area resurvey

and to perpetuate the location of said corner, at the exact location thereof, a permanent marker was placed consisting of a cast iron monument

AND on the 2nd day of May, 2022, said permanent marker was found down 0.2'± and the ties were updated

Updated reference ties are as shown below.



Revision Date
7/14/2022

N.A.D. 1983 Coordinates
(1996 Adjustment)

County Project Coordinates	
Northing	<u>150931.3726</u>
Easting	<u>526733.5315</u>
Date	<u>10/15/98</u>

I hereby certify that this United States public land survey monument record is correct and complete to the best of my knowledge and belief.

David Zieglmeier Date 2/8/23

David Zieglmeier Anoka County Surveyor
Minnesota License Number 46179

HISTORY OF GOVERNMENT CORNER

Page No. 55

County of Anoka

State of Minnesota

East 1/4 Corner of Sec. 14 Township 31 Range 23

CORNER HISTORY:

November 19, 1964 - Set cast iron monument flush using area resurvey. Established ties to monument.

August 6, 1968 - Found cast iron monument and updated ties.

August 27, 1971 - Found cast iron monument and updated ties.

September 26, 1975 - Found cast iron monument down and raised flush.

August 25, 1977 - Found cast iron monument and updated ties.

June 8, 1981 - Found cast iron monument and updated ties.

July 19, 1990 - Found cast iron monument and updated ties.

June 26, 1995 - Found cast iron monument and updated ties.

October 15, 1998 - Found cast iron monument and updated ties. Established NAD 1983 (1996 adj.) Anoka County project coordinates by static GPS methods.

October 17, 2005 - Found cast iron monument and updated ties.

May 20, 2014 - Found cast iron monument down 0.2'±. Verified position by VRS GPS methods. Updated ties.

June 19, 2019 - Found cast iron monument down 0.2'±. Verified position by VRS GPS methods. Updated ties.

May 2, 2022 - Found cast iron monument down 0.2'±. Verified position by VRS GPS methods. Updated ties.