

CERTIFICATE OF LOCATION OF GOVERNMENT CORNER

County of Anoka

State of Minnesota

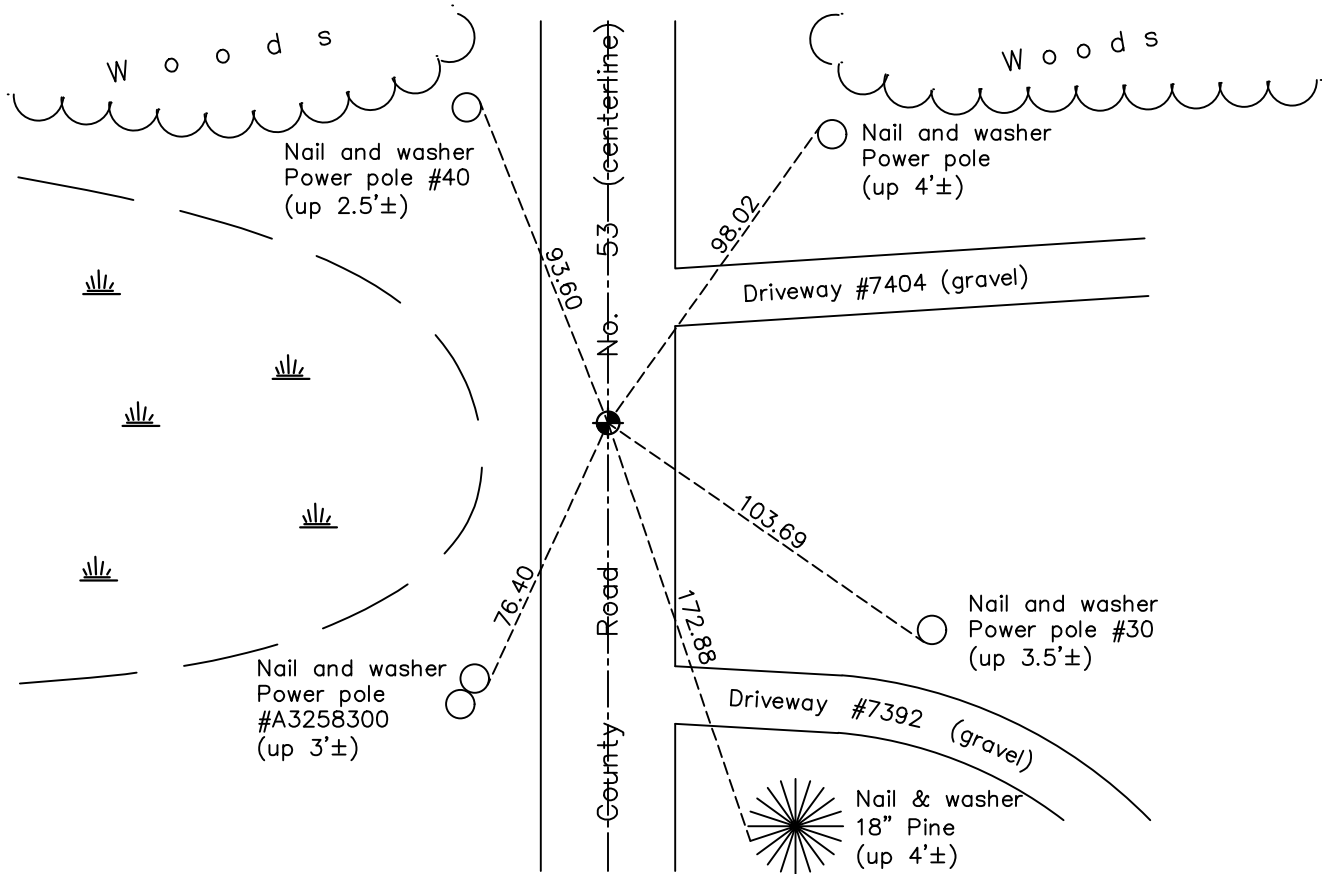
East 1/4 Corner of Sec. 13 Township 31 Range 23

On the 12th day of April, 1962, the described corner was evidenced by a 3/4" iron pipe

and to perpetuate the location of said corner, at the exact location thereof, a permanent marker was placed consisting of a cast iron monument

AND on the 23rd day of May, 2022, said permanent marker was found flush and the ties were updated

Updated reference ties are as shown below.



Revision Date

7/14/2022

N.A.D. 1983 Coordinates
(1996 Adjustment)

County Project Coordinates	
Northing	<u>150818.4233</u>
Easting	<u>531973.8444</u>
Date	<u>6/11/98</u>

I hereby certify that this United States public land survey monument record is correct and complete to the best of my knowledge and belief.

David Zieglmeier Date 2/8/23

David Zieglmeier Anoka County Surveyor
Minnesota License Number 46179

HISTORY OF GOVERNMENT CORNER

Page No. 55A

County of Anoka

State of Minnesota

East 1/4 Corner of Sec. 13 Township 31 Range 23

CORNER HISTORY:

February 24, 1958 - Found 1" iron pipe down 3" in gravel road and established ties to iron by G. Hopkins.

April 12, 1962 - Found 3/4" iron pipe and replaced with a cast iron monument. Updated ties.

July 16, 1986 - Found cast iron monument and updated ties.

August 29, 1991 - Found cast iron monument and updated ties.

July 24, 1995 - Found cast iron monument and updated ties.

June 11, 1998 - Found cast iron monument, established NAD 1983 (1996 adj.) Anoka County project coordinates by static GPS methods and updated ties.

June 28, 2006 - Found cast iron monument and updated ties.

May 16, 2014 - Found cast iron monument, verified position by VRS GPS methods and updated ties.

June 19, 2019 - Found cast iron monument, verified position by VRS GPS methods and updated ties.

May 23, 2022 - Found cast iron monument, verified position by VRS GPS method and updated ties.