

CERTIFICATE OF LOCATION OF GOVERNMENT CORNER

County of Anoka

State of Minnesota

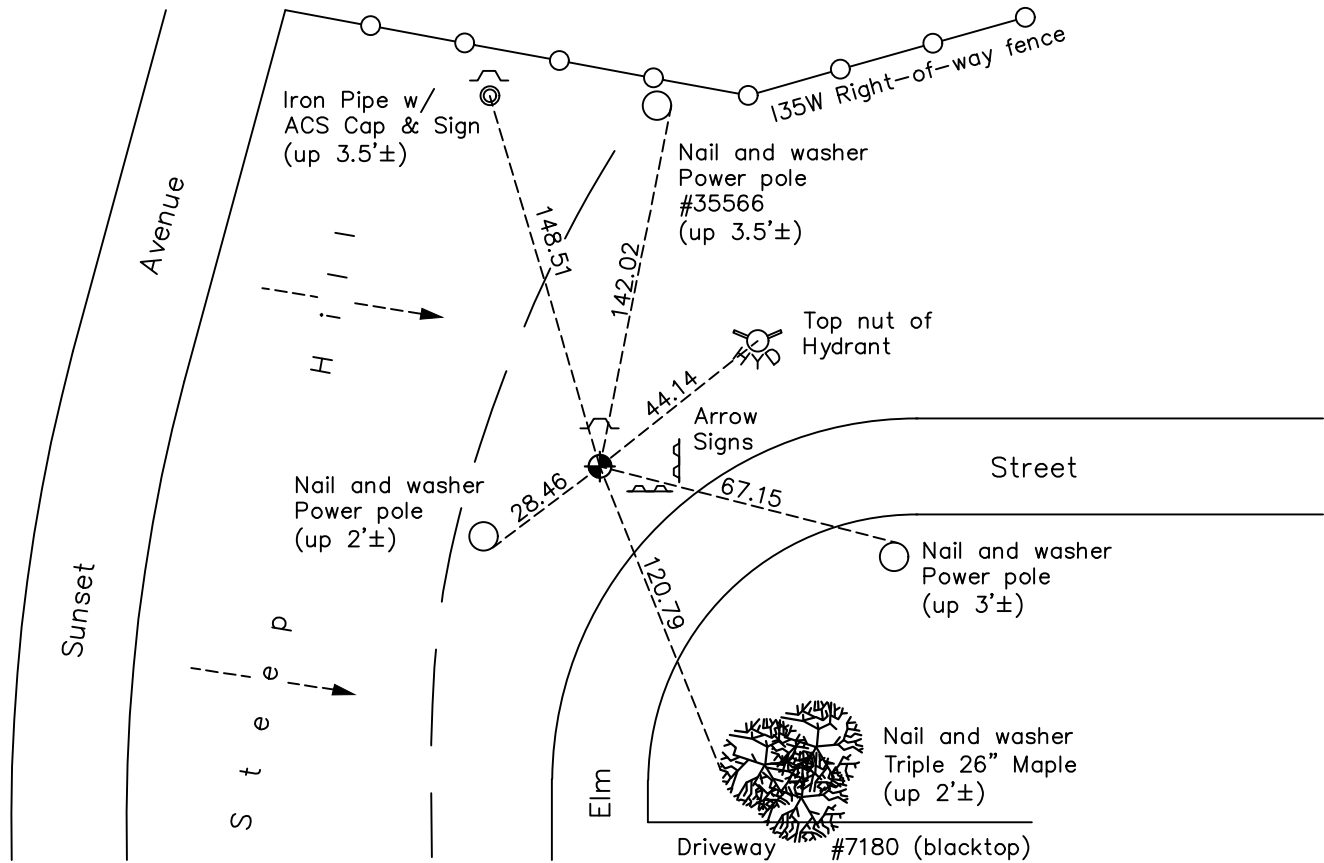
Southeast Corner of Sec. 13 Township 31 Range 23

On the 14th day of August, 1968, the described corner was evidenced by a granite monument

and to perpetuate the location of said corner, at the exact location thereof, a permanent marker was placed consisting of a cast iron monument with a sign and post on the north side

AND on the 29th day of April, 2022, said permanent marker was found down 0.3'± and the ties were updated

Updated reference ties are as shown below.



Revision Date
7/14/2022

N.A.D. 1983 Coordinates
(1996 Adjustment)

County Project Coordinates	
Northing	<u>148196.1790</u>
Easting	<u>531955.7889</u>
Date	<u>6/11/98</u>

I hereby certify that this United States public land survey monument record is correct and complete to the best of my knowledge and belief.

David Zieglmeier Date 2/8/23

David Zieglmeier Anoka County Surveyor
Minnesota License Number 46179

HISTORY OF GOVERNMENT CORNER

Page No. 56

County of Anoka

State of Minnesota

Southeast Corner of Sec. 13 Township 31 Range 23

CORNER HISTORY:

March 1954 - Found granite monument and established ties to monument, by Egan Field & Nowak.

March 7, 1962 - Found 6" x 6" granite monument down 0.6' and updated ties.

June 9, 1964 - Found granite monument and updated ties.

April 22, 1965 - Found granite monument down 0.6', set construction ties and updated corner ties prior to road construction.

August 14, 1968 - Set 6" solid cast iron monument flush with road on top of granite monument. Updated ties.

August 31, 1971 - Found cast iron monument and updated ties.

May 20, 1975 - Found cast iron monument and updated ties.

August 23, 1977 - Found cast iron monument and updated ties.

May 29, 1980 - Found cast iron monument and updated ties.

June 3, 1986 - Found cast iron monument and updated ties.

January 12, 1988 - Found cast iron monument and updated ties.

July 19, 1990 - Found cast iron monument and updated ties.

July 10, 1995 - Found cast iron monument and updated ties.

November 15, 1995 - Found cast iron monument and set construction ties prior to road construction.

December 12, 1996 - Found cast iron monument and updated ties.

May 12, 1997 - Set cast iron monument in concrete under blacktop road and updated ties.

June 11, 1998 - Found cast iron monument, established NAD 1983 (1996 adj.) Anoka County project coordinates by static GPS methods and updated ties.

May 28, 2003 - Found cast iron monument and set construction ties prior to road construction. Removed monument.

June 28, 2006 - Found cast iron monument and updated ties.

May 28, 2014 - Found cast iron monument down 0.3'±, verified position by VRS GPS methods and updated ties.

June 19, 2019 - Found cast iron monument down 0.3'±, verified position by VRS GPS methods and updated ties.

April 29, 2022 - Found cast iron monument down 0.3'±, verified position by VRS GPS methods and updated ties