

CERTIFICATE OF LOCATION OF GOVERNMENT CORNER

County of Anoka

State of Minnesota

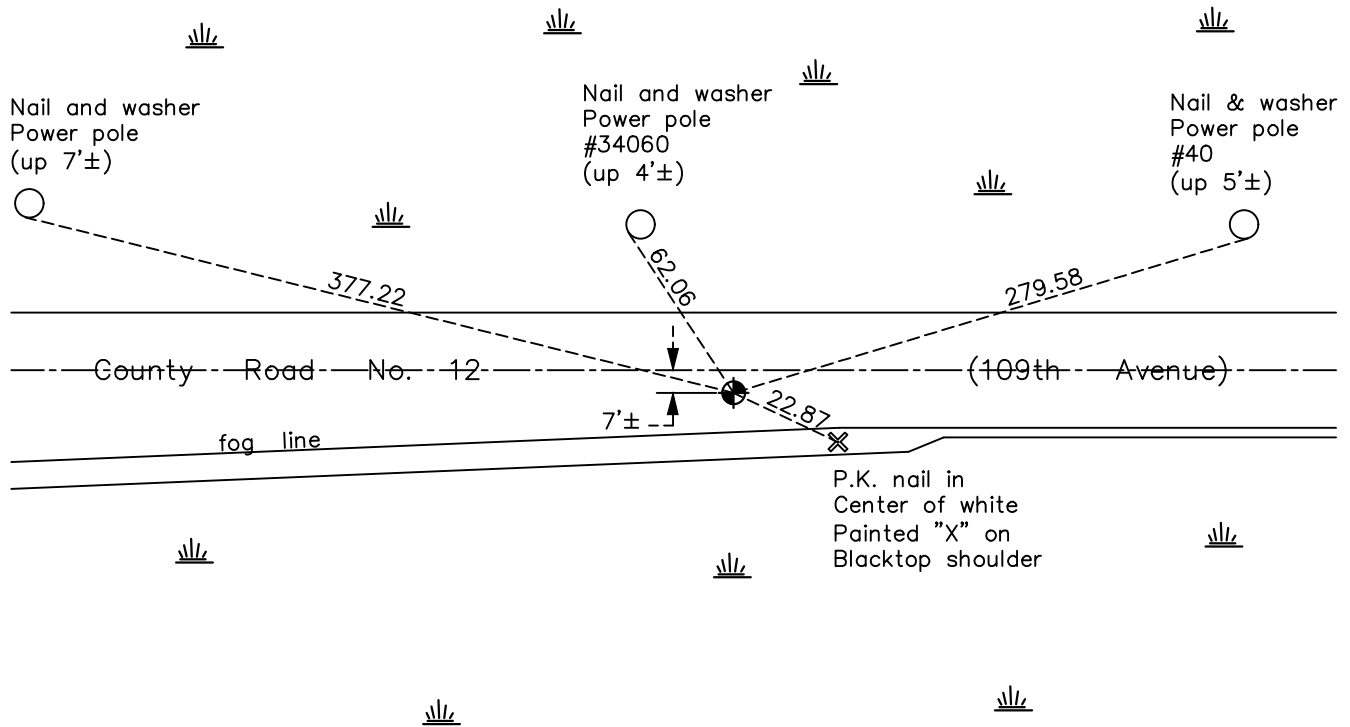
North $\frac{1}{4}$ Corner of Sec. 24 Township 31 Range 23

On the 19th day of July, 1962, the described corner was evidenced by a 3/4" iron pipe

and to perpetuate the location of said corner, at the exact location thereof, a permanent marker was placed consisting of a cast iron monument

AND on the 12th day of May, 2022, said permanent marker was found flush and the ties were updated

Updated reference ties are as shown below.



Revision Date
07/18/2022

N.A.D. 1983 Coordinates
 (1996 Adjustment)

County Project Coordinates	
Northing	<u>148234.9549</u>
Easting	<u>529325.1578</u>
Date	<u>10/20/98</u>

I hereby certify that this United States public land survey monument record is correct and complete to the best of my knowledge and belief.
David Zieglmeier Date 2/8/23
 David Zieglmeier Anoka County Surveyor
 Minnesota License Number 46179

HISTORY OF GOVERNMENT CORNER

Page No. 57

County of Anoka

State of Minnesota

North 1/4 Corner of Sec. 24 Township 31 Range 23

CORNER HISTORY:

July 19, 1962 - Found 3/4" iron pipe set by Suburban Engineering and replaced with a cast iron monument down 0.4'. Established ties to monument.

June 9, 1964 - Found cast iron monument and updated ties.

July 22, 1968 - Found cast iron monument and updated ties.

August 15, 1969 - Found cast iron monument down 0.1' and updated ties.

July 15, 1970 - Found cast iron monument broken. Set new cast iron monument using corner ties. Updated ties.

August 28, 1970 - Set removable top cast iron monument flush and updated ties.

September 1, 1971 - Found cast iron monument and updated ties.

May 20, 1975 - Found cast iron monument and updated ties.

August 24, 1977 - Found cast iron monument and updated ties.

May 28, 1980 - Found cast iron monument and updated ties.

June 4, 1986 - Found cast iron monument and updated ties.

July 19, 1990 - Found cast iron monument and updated ties.

July 10, 1995 - Found cast iron monument and updated ties.

October 20, 1998 - Found cast iron monument, established NAD 1983 (1996 adj.) Anoka County project coordinates by static GPS methods and updated ties.

June 28, 2006 - Found cast iron monument down, raised flush and updated ties.

May 21, 2014 - Found cast iron monument and updated ties.

June 24, 2019 - Found cast iron monument, verified position by VRS GPS methods and updated ties.

May 12, 2022 - Found cast iron monument flush, verified position by VRS GPS methods and updated ties.