

CERTIFICATE OF LOCATION OF GOVERNMENT CORNER

County of Anoka

State of Minnesota

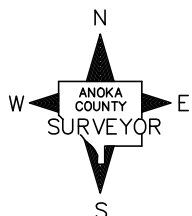
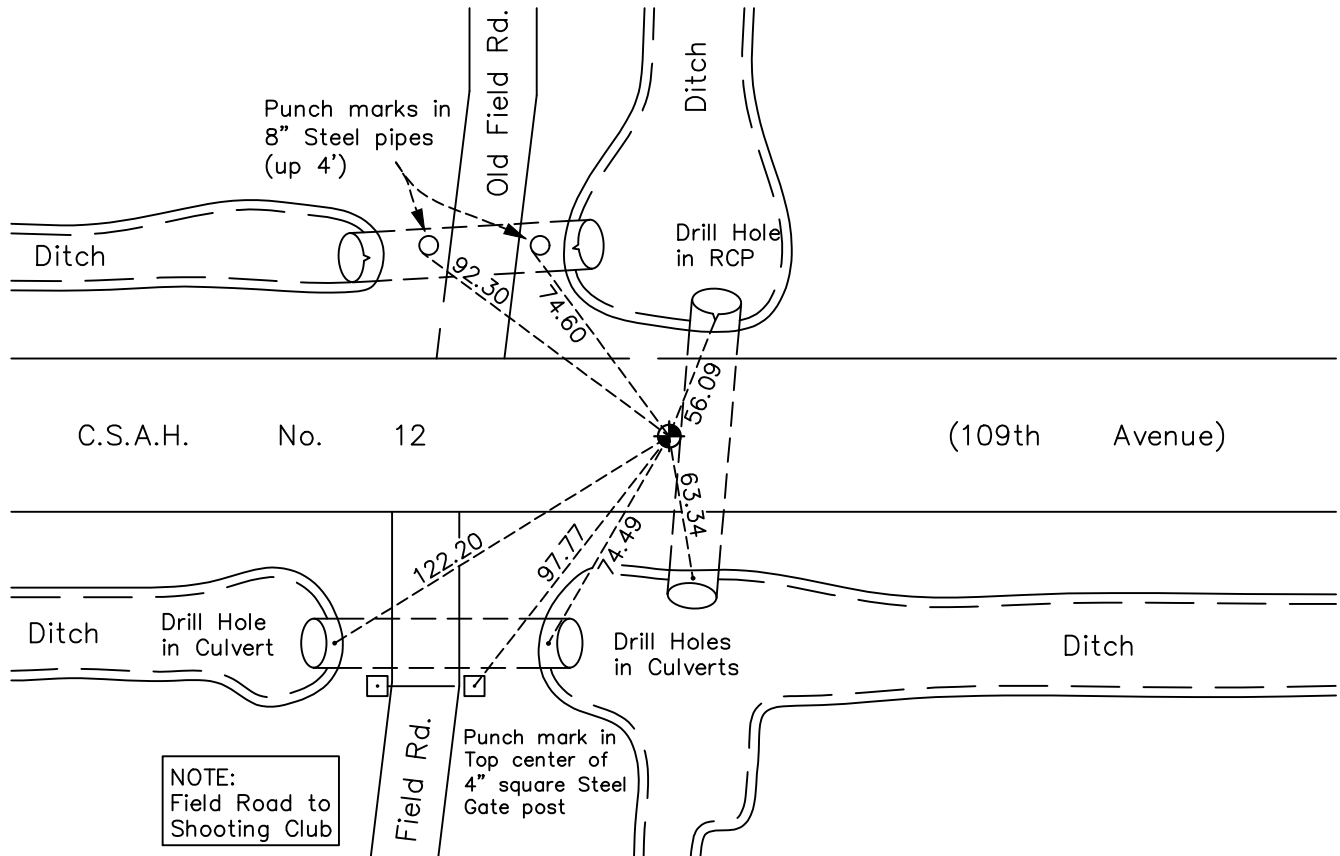
South $\frac{1}{4}$ Corner of Sec. 14 Township 31 Range 23

On the 20th day of March, 1974, the described corner was evidenced by area resurvey

and to perpetuate the location of said corner, at the exact location thereof, a permanent marker was placed consisting of a cast iron monument

AND on the 28th day of September, 2022, said permanent marker was Reset CIM flush to surface after road construction, ties were updated

Updated reference ties are as shown below.



Revision Date
10/19/22

N.A.D. 1983 Coordinates
(1996 Adjustment)

County Project Coordinates	
Northing	148313.4896
Easting	524047.5782
Date	10/20/98

I hereby certify that this United States public land survey monument record is correct and complete to the best of my knowledge and belief.

David Zieglmeier Date 2/8/23

David Zieglmeier Anoka County Surveyor
Minnesota License Number 46179

HISTORY OF GOVERNMENT CORNER

Page No. 59

County of Anoka

State of Minnesota

South 1/4 Corner of Sec. 14 Township 31 Range 23

CORNER HISTORY:

November 19, 1964 - Set 1" x 10' red and white iron pipe using area resurvey.

March 20, 1974 - Set 2" red and white iron pipe up 3'± using area resurvey and established ties to iron pipe.

February 5, 1986 - Found 2" iron pipe flush and updated ties prior to road construction.

June 6, 1989 - Set cast iron monument flush after road construction and updated ties.

July 18, 1990 - Found cast iron monument and updated ties.

July 10, 1995 - Found cast iron monument and updated ties.

October 20, 1998 - Found cast iron monument, established NAD 1983 (1996 adj.) Anoka County project coordinates by static GPS methods and updated ties.

June 28, 2006 - Found cast iron monument and updated ties.

July 2, 2014 - Found cast iron monument and updated ties.

July 22, 2019 - Found cast iron monument and updated ties.

April 26, 2021 - Removed CIM for construction updated ties.

September 28, 2022 - Reset cast iron monument flush to surface after road construction, using static GPS, and updated ties.