

CERTIFICATE OF LOCATION OF GOVERNMENT CORNER

County of Anoka

State of Minnesota

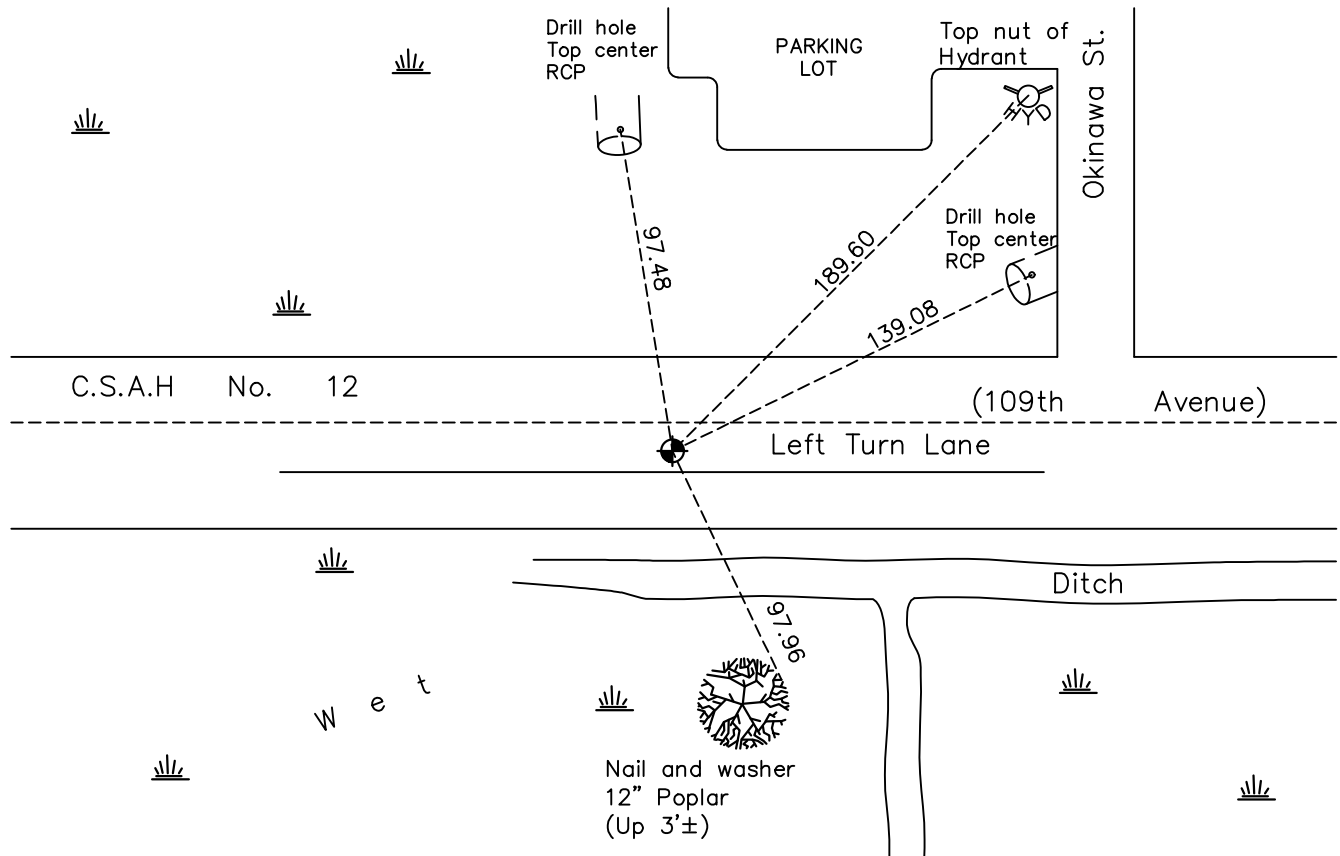
Southeast Corner of Sec. 15 Township 31 Range 23

On the 18th day of November, 1964, the described corner was evidenced by area resurvey

and to perpetuate the location of said corner, at the exact location thereof, a permanent marker was placed consisting of a cast iron monument

AND on the 28th day of Sept, 2022, said permanent marker was Reset CIM flush to surface after road construction, ties were updated

Updated reference ties are as shown below.



Revision Date
10/19/2022

N.A.D. 1983 Coordinates
 (1996 Adjustment)

County Project Coordinates	
Northing	<u>148335.1861</u>
Easting	<u>521380.5637</u>
Date	<u>10/20/98</u>

I hereby certify that this United States public land survey monument record is correct and complete to the best of my knowledge and belief.
David Zieglmeier Date 2/8/23
 David Zieglmeier Anoka County Surveyor
 Minnesota License Number 46179

HISTORY OF GOVERNMENT CORNER

Page No. 60

County of Anoka

State of Minnesota

Southeast Corner of Sec. 15 Township 31 Range 23

CORNER HISTORY:

November 18, 1964 - Set 1" x 12' red and white iron pipe using area resurvey and established ties to iron pipe.

February 5, 1986 - Found red and white iron pipe and updated ties prior to road construction.

November 30, 1987 - Found red and white iron pipe and updated ties.

June 6, 1989 - Set cast iron monument after road construction and updated ties.

July 19, 1990 - Found cast iron monument and updated ties.

October 20, 1998 - Found cast iron monument, established NAD 1983 (1996 adj.) Anoka County project coordinates by static GPS methods and updated ties.

June 28, 2003 - Found cast iron monument and updated ties.

June 28, 2006 - Found cast iron monument and updated ties.

July 2, 2014 - Found cast iron monument and updated ties.

July 22, 2019 - Found cast iron monument and updated ties.

April 26, 2021- Removed monument for road construction, updated ties.

September 28, 2022 - Set cast iron monument flush to surface after road construction, using static GPS, and updated ties.