

CERTIFICATE OF LOCATION OF GOVERNMENT CORNER

County of Anoka

State of Minnesota

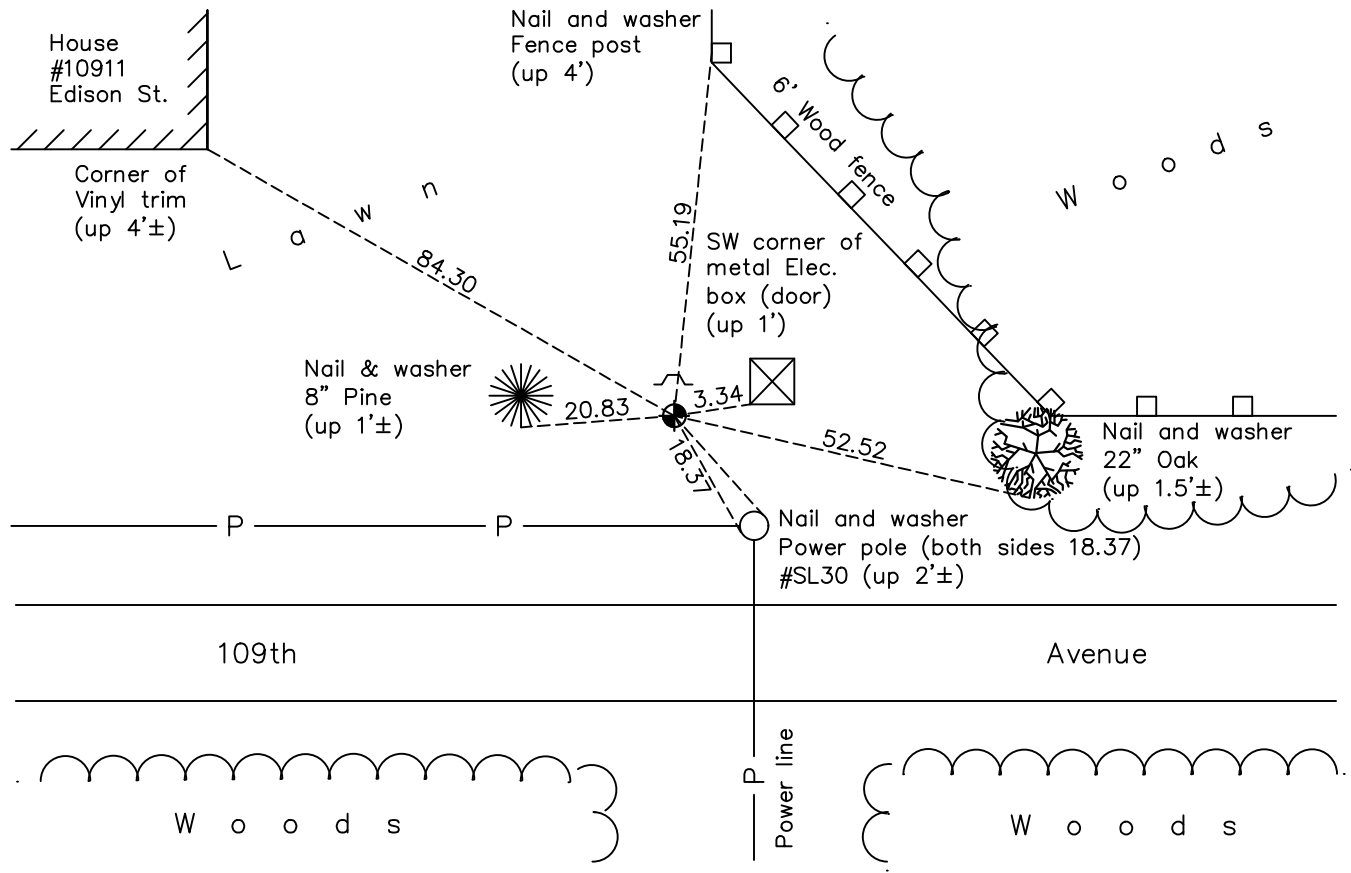
South $\frac{1}{4}$ Corner of Sec. 15 Township 31 Range 23

On the 17th day of November, 1964, the described corner was evidenced by area resurvey

and to perpetuate the location of said corner, at the exact location thereof, a permanent marker was placed consisting of a cast iron monument with a sign and post on the north side

AND on the 5th day of May, 2022, said permanent marker was found down 0.3'± and the ties were updated

Updated reference ties are as shown below.



Revision Date
07/18/2022

N.A.D. 1983 Coordinates
(1996 Adjustment)

County Project Coordinates	
Northing	<u>148371.1744</u>
Easting	<u>518723.2152</u>
Date	<u>10/20/98</u>

I hereby certify that this United States public land survey monument record is correct and complete to the best of my knowledge and belief.

David Zieglmeier Date 2/8/23

David Zieglmeier Anoka County Surveyor
 Minnesota License Number 46179

HISTORY OF GOVERNMENT CORNER

Page No. 61

County of Anoka

State of Minnesota

South 1/4 Corner of Sec. 15 Township 31 Range 23

CORNER HISTORY:

November 17, 1964 - Set cast iron monument up 0.1' using area resurvey and established ties to monument.

September 8, 1971 - Found cast iron monument and updated ties.

February 5, 1986 - Found cast iron monument and updated ties prior to road construction.

June 6, 1989 - Found cast iron monument undisturbed after construction and updated ties.

July 18, 1990 - Found cast iron monument and updated ties.

July 10, 1995 - Found cast iron monument and updated ties.

October 20, 1998 - Found cast iron monument and updated ties. Established NAD 1983 (1996 adj.) Anoka County project coordinates by static GPS methods.

2006 - Found cast iron monument and updated ties.

June 10, 2014 - Found cast iron monument and updated ties.

June 19, 2019 - Found cast iron monument. Verified position by VRS GPS methods. Updated ties.

May 5, 2022 - Found cast iron monument down 0.3'±. Verified position by VRS GPS methods. Updated ties.