

# CERTIFICATE OF LOCATION OF GOVERNMENT CORNER

County of Anoka

State of Minnesota

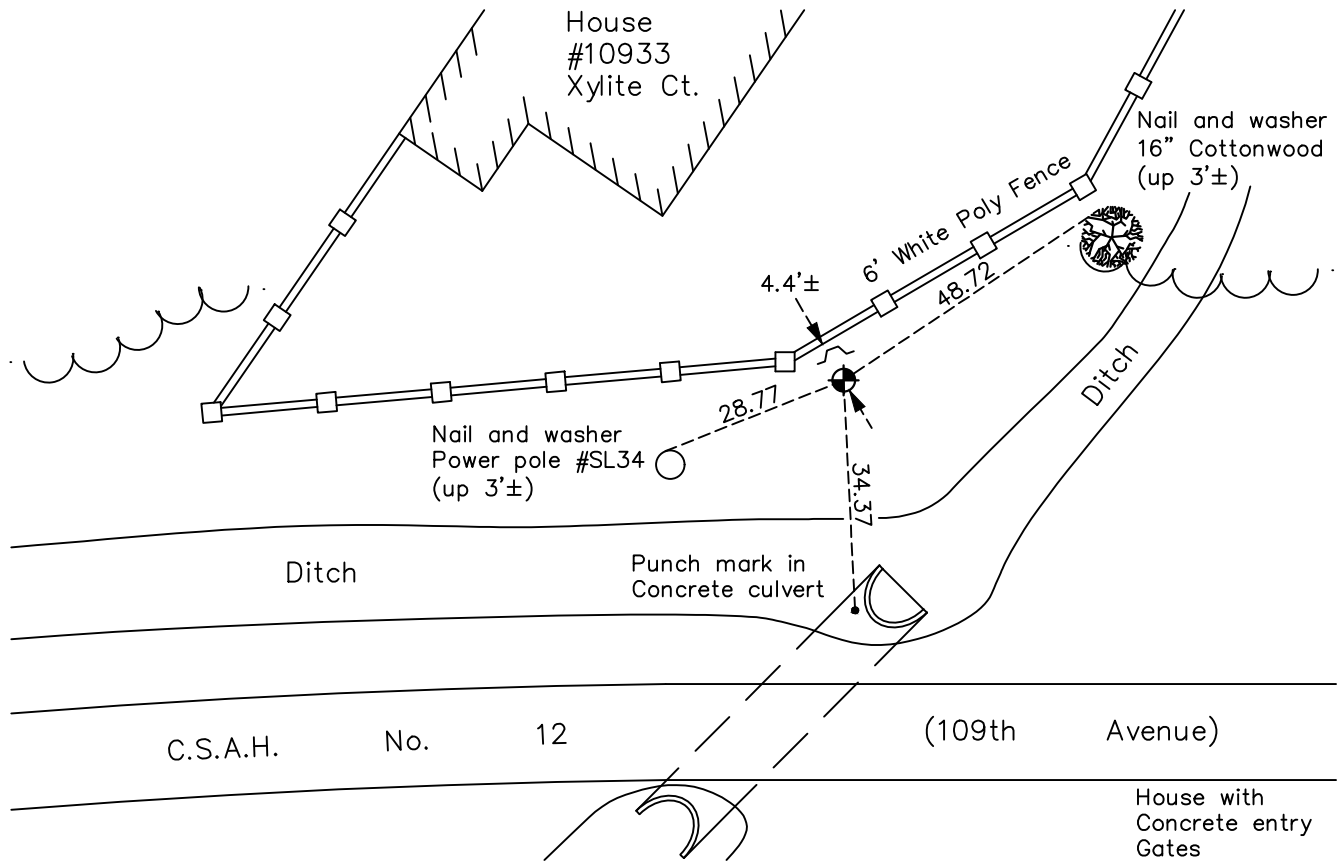
## Southeast Corner of Sec. 16 Township 31 Range 23

On the 29th day of October, 1964, the described corner was evidenced by area resurvey

and to perpetuate the location of said corner, at the exact location thereof, a permanent marker was placed consisting of a cast iron monument with a sign and post on the north side

AND on the 2nd day of May, 2022, said permanent marker was found flush and the ties were updated

Updated reference ties are as shown below.



Revision Date  
07/18/2022

N.A.D. 1983 Coordinates  
 (1996 Adjustment)

County Project Coordinates	
Northing	148407.1902
Easting	516066.1273
Date	10/20/98

I hereby certify that this United States public land survey monument record is correct and complete to the best of my knowledge and belief.

*David Zieglmeier* Date 2/8/23

David Zieglmeier Anoka County Surveyor  
 Minnesota License Number 46179

# HISTORY OF GOVERNMENT CORNER

Page No. 62

County of Anoka

State of Minnesota

## Southeast Corner of Sec. 16 Township 31 Range 23

### **CORNER HISTORY:**

October 29, 1964 - Set 1" red & white iron pipe using area resurvey. Established ties to monument.

September 7, 1971 - Found red & white iron pipe and updated ties.

May 29, 1975 - Found red & white iron pipe and updated ties.

February 5, 1986 - Found red & white iron pipe and updated ties.

June 7, 1989 - Replaced red & white iron pipe with cast iron monument after road construction. Updated ties. Sign and post on the north side.

July 18, 1990 - Found cast iron monument with sign and post on the north side. Updated ties.

July 18, 1990 - Found cast iron monument with sign and post on the north side. Updated ties.

August 30, 1994 - Found cast iron monument with sign and post on the north side. Updated ties.

October 20, 1998 - Found cast iron monument with sign and post on the north side and updated ties. Established NAD 1983 (1996 adj.) Anoka County project coordinates by static GPS methods.

July 10, 2006 - Found cast iron monument with sign and post on the north side. Updated ties.

June 5, 2014 - Found cast iron monument and updated ties.

June 21, 2019 - Found cast iron monument flush. Verified position by VRS GPS methods. Updated ties.

May 2, 2022 - Found cast iron monument flush. Verified position by VRS GPS methods. Updated ties.