

# CERTIFICATE OF LOCATION OF GOVERNMENT CORNER

County of Anoka

State of Minnesota

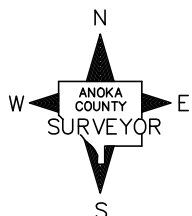
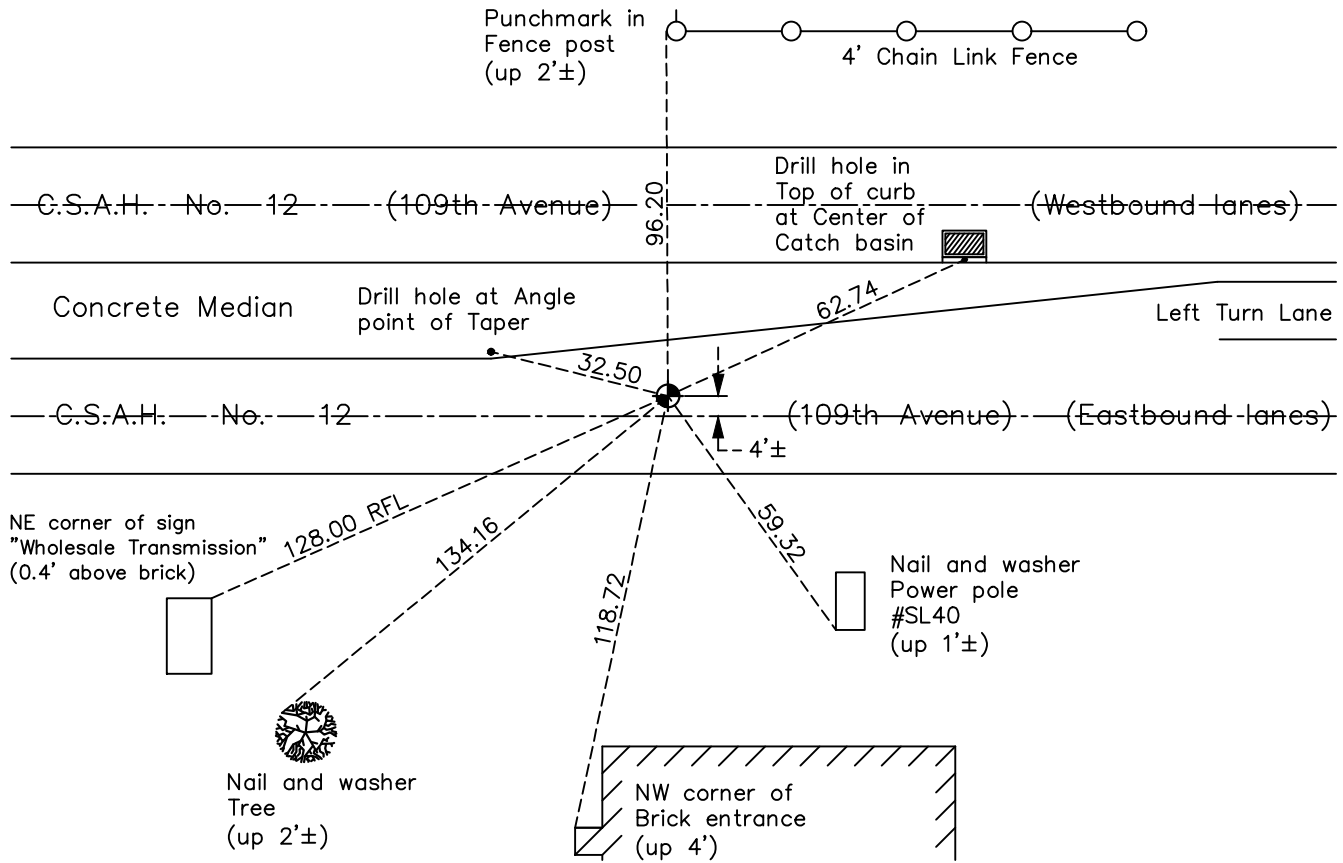
## South $\frac{1}{4}$ Corner of Sec. 16 Township 31 Range 23

On the 29th day of October, 1964, the described corner was evidenced by area resurvey

and to perpetuate the location of said corner, at the exact location thereof, a permanent marker was placed consisting of a cast iron monument

AND on the 23rd day of May, 2022, said permanent marker was found flush and the ties were updated

Updated reference ties are as shown below.



Revision Date  
07/18/2022

N.A.D. 1983 Coordinates  
(1996 Adjustment)

County Project Coordinates	
Northing	148414.4241
Easting	513405.1215
Date	10/20/98

I hereby certify that this United States public land survey monument record is correct and complete to the best of my knowledge and belief.

*David Zieglmeier* Date 2/8/23

David Zieglmeier Anoka County Surveyor  
Minnesota License Number 46179

# HISTORY OF GOVERNMENT CORNER

Page No. 63

County of Anoka

State of Minnesota

## South 1/4 Corner of Sec. 16 Township 31 Range 23

### **CORNER HISTORY:**

October 29, 1964 - Set cast iron monument down 0.2' using area resurvey and established ties to monument.

August 7, 1968 - Found cast iron monument and updated ties.

September 2, 1971 - Found cast iron monument and updated ties.

May 15, 1975 - Found cast iron monument and updated ties.

August 24, 1977 - Found cast iron monument down 0.5'± and updated ties.

June 9, 1980 - Found cast iron monument and updated ties.

August 27, 1984 - Found cast iron monument and set construction ties prior to construction.

August 8, 1985 - Set cast iron monument down 0.5'± after construction. Updated ties.

July 18, 1990 - Found cast iron monument and updated ties.

July 13, 1995 - Found cast iron monument and updated ties.

October 20, 1998 - Found cast iron monument and updated ties. Established NAD 1983 (1996 adj.) Anoka County project coordinates by static GPS methods.

May 12, 2014 - Found cast iron monument flush. Verified position by VRS GPS methods. Updated ties.

July 29, 2019 - Found cast iron monument flush and updated ties.

May 23, 2022 - Found cast iron monument flush. Verified position by VRS GPS methods. Updated ties.