

CERTIFICATE OF LOCATION OF GOVERNMENT CORNER

County of Anoka

State of Minnesota

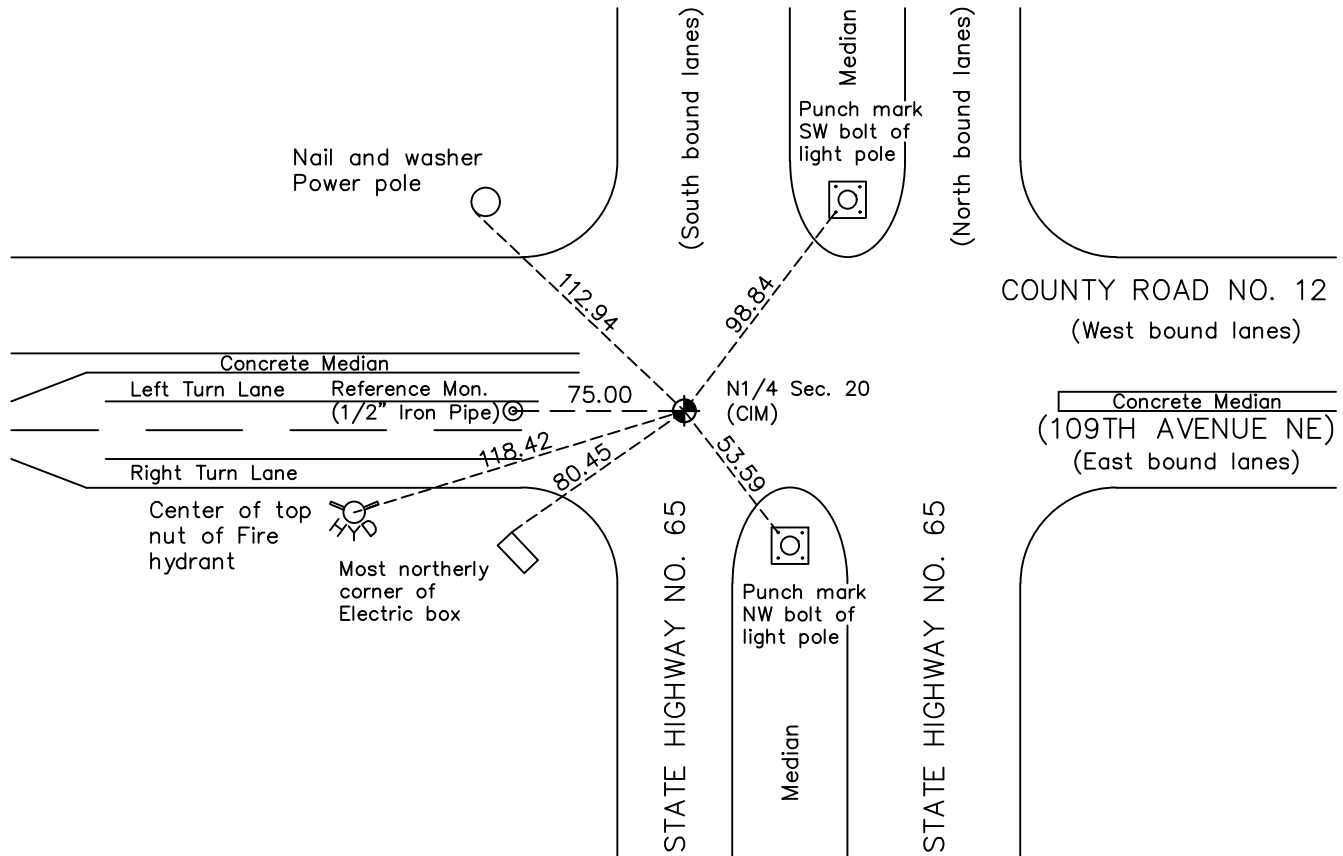
North 1/4 Corner of Sec. 20 Township 31 Range 23

On the 25th day of August, 1969, the described corner was evidenced by a disk

and to perpetuate the location of said corner, at the exact location thereof, a permanent marker was placed consisting of a cast iron monument

AND on the 13th day of June, 2023, said permanent marker was found down 0.1'± with road surface. Reference monument (index #1629) was set 75' westerly and ties established.

Updated reference ties are as shown below.



N.A.D. 1983 Coordinates
(1996 Adjustment)

County Project Coordinates	
Northing	148456.8190
Easting	508106.7995
Date	9/05/2006

Revision Date
8/07/2023

I hereby certify that this United States public land survey monument record is correct and complete to the best of my knowledge and belief.

David Zieglmeier Date 12/7/23

David M. Zieglmeier, Anoka County Surveyor
 Minnesota License Number 46179

REFERENCE MONUMENT FOR GOVERNMENT CORNER

Reference to County of Anoka State of Minnesota

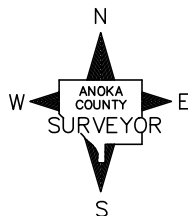
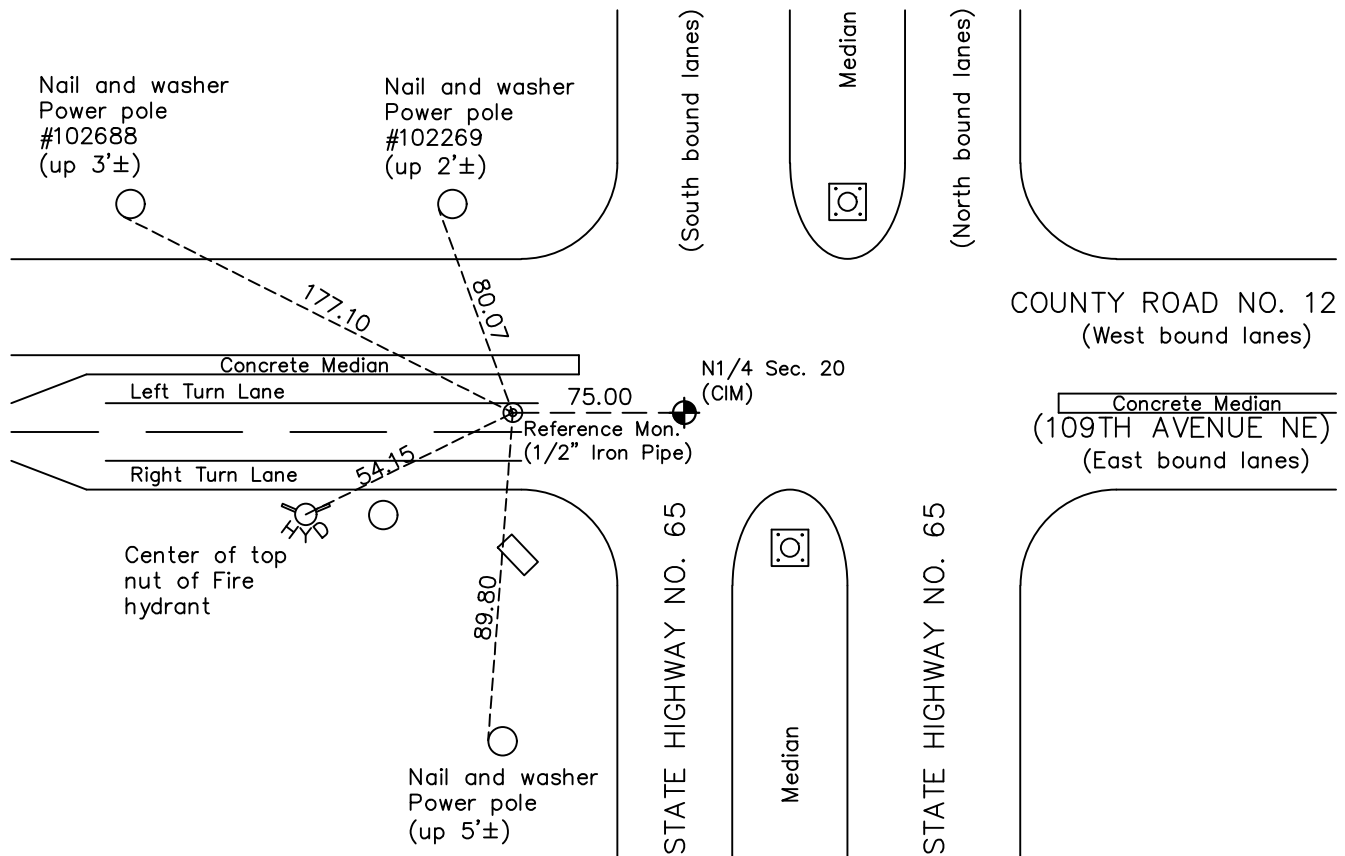
North 1/4 Corner of Sec. 20 Township 31 Range 23

On the 13th day of June, 2023, the described reference monument was evidenced by a computed position 75' westerly along the section line

and to reference the location of said corner, at the exact location thereof, a permanent marker was placed consisting of a 1/2" X 2' long rebar with Aluminum County cap and punch mark

AND on the 13th day of June, 2023, said permanent marker was set flush using RTK GPS method and ties were established to the reference monument

Updated reference ties are as shown below.



Revision Date
8/07/2023

REFERENCE MONUMENT
 N.A.D. 1983 (2011 Adj.)

County Project Coordinates	
Northing	148457.0676
Easting	508031.7999
Date	6/13/2023

HISTORY OF GOVERNMENT CORNER

Page No. 65

County of Anoka

State of Minnesota

North 1/4 Corner of Sec. 20 Township 31 Range 23

CORNER HISTORY:

June 5, 1947 - Found old rotted wood hub and replaced with a concrete monument. Established ties to monument by Harvey Cartwright.

August 6, 1959 - Found P.K. masonry nail and updated ties by Schoell and Madson.

March 8, 1962 - Found P.K. nail and Disk using Schoell and Madson ties. Updated ties.

July 6, 1964 - Found P.K. nail and Disk. Updated ties.

August 25, 1969 - Found P.K. nail and Disk. Replaced with a cast iron monument flush and updated ties.

May 16, 1975 - Found cast iron monument down and raised flush. Updated ties.

August 11, 1977 - Found cast iron monument and updated ties.

June 11, 1980 - Found cast iron monument and updated ties.

June 4, 1986 - Found cast iron monument and updated ties.

October 24, 1990 - Found cast iron monument and updated ties.

July 18, 1995 - Found cast iron monument under blacktop road.

September 5, 2006 - Found cast iron monument down and raised flush. Established NAD 1983 (1996 adj.) Anoka County project coordinates by static GPS methods and updated ties.

December 3, 2021 - Found cast iron monument. Verified position by VRS GPS methods.

June 13, 2023 - Found cast iron monument down 0.1'±. Set **reference monument** to a computed position 75' westerly along the section line using RTK GPS method consisting of a 1/2" x 2' rebar with Anoka County aluminum cap and punch mark set flush in roadway. Established ties to the **reference monument**.