

# CERTIFICATE OF LOCATION OF GOVERNMENT CORNER

County of Anoka

State of Minnesota

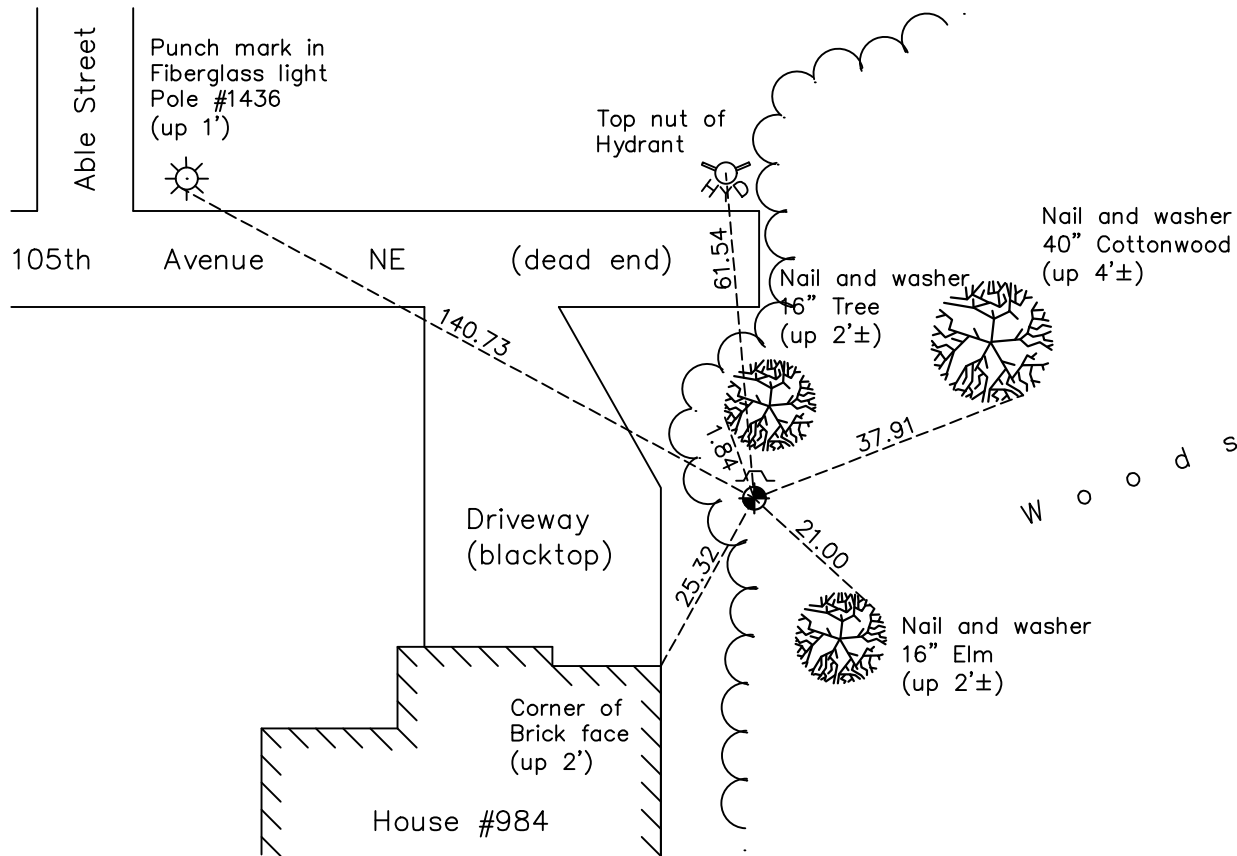
## East 1/4 Corner of Sec. 19 Township 31 Range 23

On the 5th day of July, 1977, the described corner was evidenced by area resurvey

and to perpetuate the location of said corner, at the exact location thereof, a permanent marker was placed consisting of a cast iron monument

AND on the 5th day of January, 2023, said permanent marker was found down 0.3'± with a sign and post on the north side and the Coordinates were verified by County RTK method

Updated reference ties are as shown below.



Revision Date  
02/17/2023

N.A.D. 1983 Coordinates  
(1996 Adjustment)

County Project Coordinates	
Northing	145807.9917
Easting	505410.1579
Date	12/10/98

I hereby certify that this United States public land survey monument record is correct and complete to the best of my knowledge and belief.

*David Zieglmeier* Date 2/28/23

David Zieglmeier Anoka County Surveyor  
Minnesota License Number 46179

# HISTORY OF GOVERNMENT CORNER

Page No. 68

County of Anoka

State of Minnesota

## East 1/4 Corner of Sec. 19 Township 31 Range 23

### **CORNER HISTORY:**

September 1, 1964 - Found cast iron monument up 0.1'±, set in may of 1959. Established ties to monument.

August 9, 1968 - Found cast iron monument and updated ties.

July 23, 1969 - Found cast iron monument and set construction ties prior to construction.

October 5, 1971 - Found cast iron monument and updated ties.

May 28, 1975 - Found cast iron monument and updated ties.

July 5, 1977 - Set cast iron monument down 0.5'± using area resurvey and updated ties.

July 7, 1977 - Found cast iron monument down and raised flush.

April 25, 1978 - Found cast iron monument broken and replaced with a cast iron monument. Updated ties.

June 4, 1980 - Found cast iron monument and updated ties.

August 29, 1988 - Found cast iron monument down 0.5'±. Verified position by area resurvey. Updated ties.

June 6, 1986 - Found cast iron monument and updated ties.

August 29, 1988 - Found cast iron monument and updated ties.

June 29, 1990 - Found cast iron monument and updated ties.

July 27, 1995 - Found cast iron monument and updated ties.

December 10, 1998 - Found cast iron monument, established NAD 1983 (1996 adj.) Anoka County project coordinates by static GPS methods and updated ties.

November 5, 2001 - Found cast iron monument missing. Set cast iron monument using static GPS methods. Updated ties.

June 9, 2014 - Found cast iron monument and updated ties.

June 19, 2019 - Found cast iron monument down 0.3'± and updated ties.

May 3, 2022 - Found cast iron monument down 0.1'± and updated ties.

January 5, 2023 - Found cast iron monument down 0.3'±, verified position correct by County RTK method