

CERTIFICATE OF LOCATION OF GOVERNMENT CORNER

County of Anoka

State of Minnesota

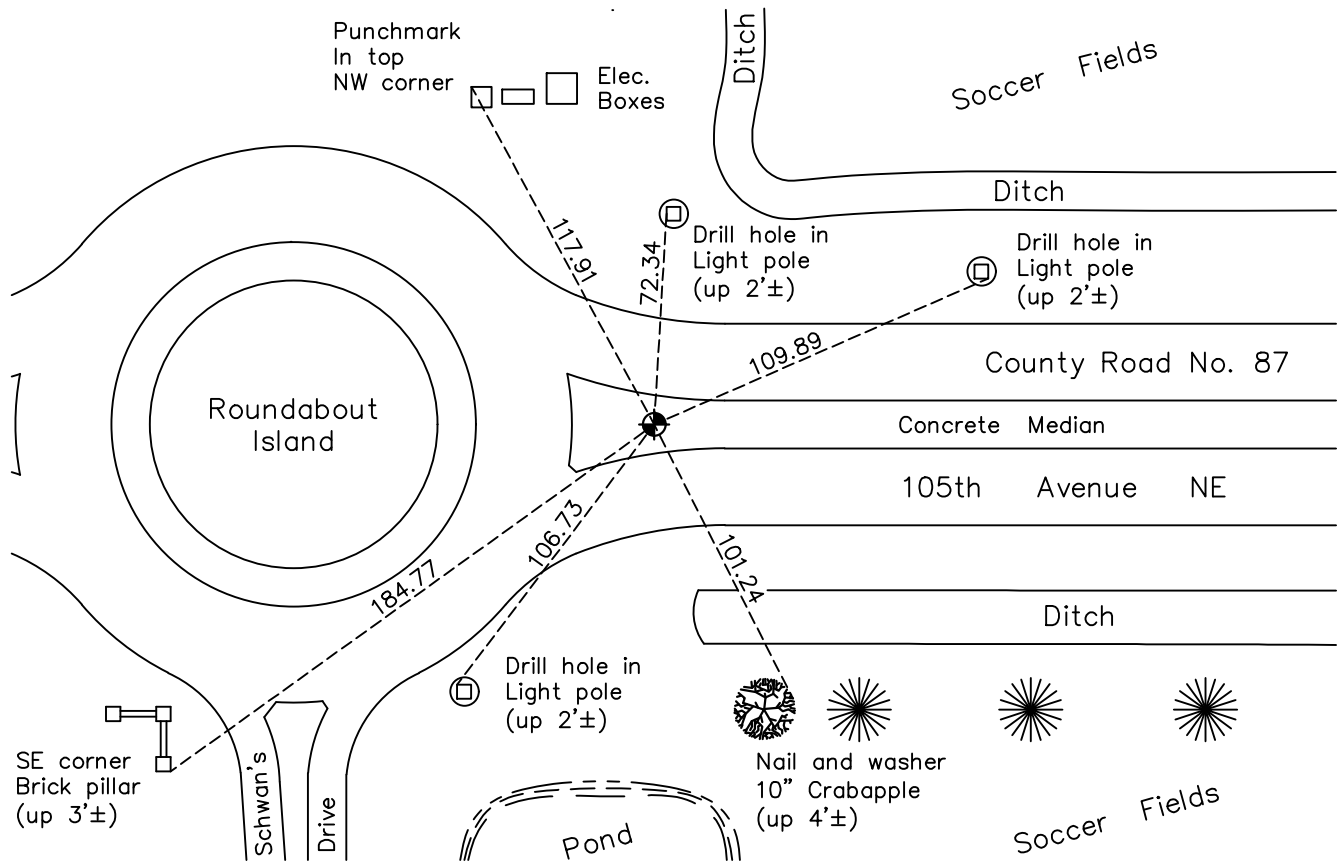
West 1/4 Corner of Sec. 21 Township 31 Range 23

On the 6th day of September, 1968, the described corner was evidenced by a 2" iron pipe

and to perpetuate the location of said corner, at the exact location thereof, a permanent marker was placed consisting of a cast iron monument in concrete median

AND on the 3rd day of May, 2022, said permanent marker was found flush and the ties were updated.

Updated reference ties are as shown below.



Revision Date
07/18/2022

N.A.D. 1983 Coordinates
(1996 Adjustment)

County Project Coordinates	
Northing	145756.9751
Easting	510762.3057
Date	11/09/98

I hereby certify that this United States public land survey monument record is correct and complete to the best of my knowledge and belief.

David Zieglmeier Date 2/28/23

David Zieglmeier Anoka County Surveyor
Minnesota License Number 46179

HISTORY OF GOVERNMENT CORNER

Page No. 69

County of Anoka

State of Minnesota

West 1/4 Corner of Sec. 21 Township 31 Range 23

CORNER HISTORY:

June 9, 1947 - Cartwright found concrete monument and tied out.

September 17, 1964 - M.D. Anderson found 2" Iron pipe from ties by Toltz, Kind Duval, Anderson and Assoc. Inc. down 10". Tied out iron pipe. 1/2" Iron pipe flush with the surface.

August 6, 1968 - Updated ties

September 6, 1968 - Set cast iron monument flush with P.K. nails 2.00' north and east. Established ties to monument.

October 5, 1971 - Found cast iron monument and updated ties.

May 21, 1975 - Found cast iron monument and updated ties.

August 22, 1977 - Found cast iron monument and updated ties.

August 13, 1985 - Found cast iron monument and set construction ties.

March 17, 1986 - Found cast iron monument and updated ties.

June 3, 1986 - Found cast iron monument and updated ties.

July 25, 1989 - Found cast iron monument and set construction ties.

Unknown date - Set cast iron monument flush after construction and updated ties.

June 18, 1990 - Found cast iron monument down after construction and raised flush. Updated ties.

June 9, 1995 - Found cast iron monument and updated ties.

November 9, 1998 - Found cast iron monument and updated ties. Established NAD 1983 (1996 adj.) Anoka County project coordinates by static GPS methods.

June 22, 2006 - Found cast iron monument and updated ties.

June 25, 2014 - Found cast iron monument and updated ties.

August 15, 2018 - Set construction ties prior to road construction.

August 30, 2018 - Set cast iron monument flush after road construction using construction ties. Verified location by static GPS methods and updated ties.

January 6, 2020 - Found cast iron monument. Verified position by VRS GPS methods. Updated ties.

May 3, 2022 - Found cast iron monument flush. Verified position by VRS GPS methods. Updated ties.