

CERTIFICATE OF LOCATION OF GOVERNMENT CORNER

County of Anoka

State of Minnesota

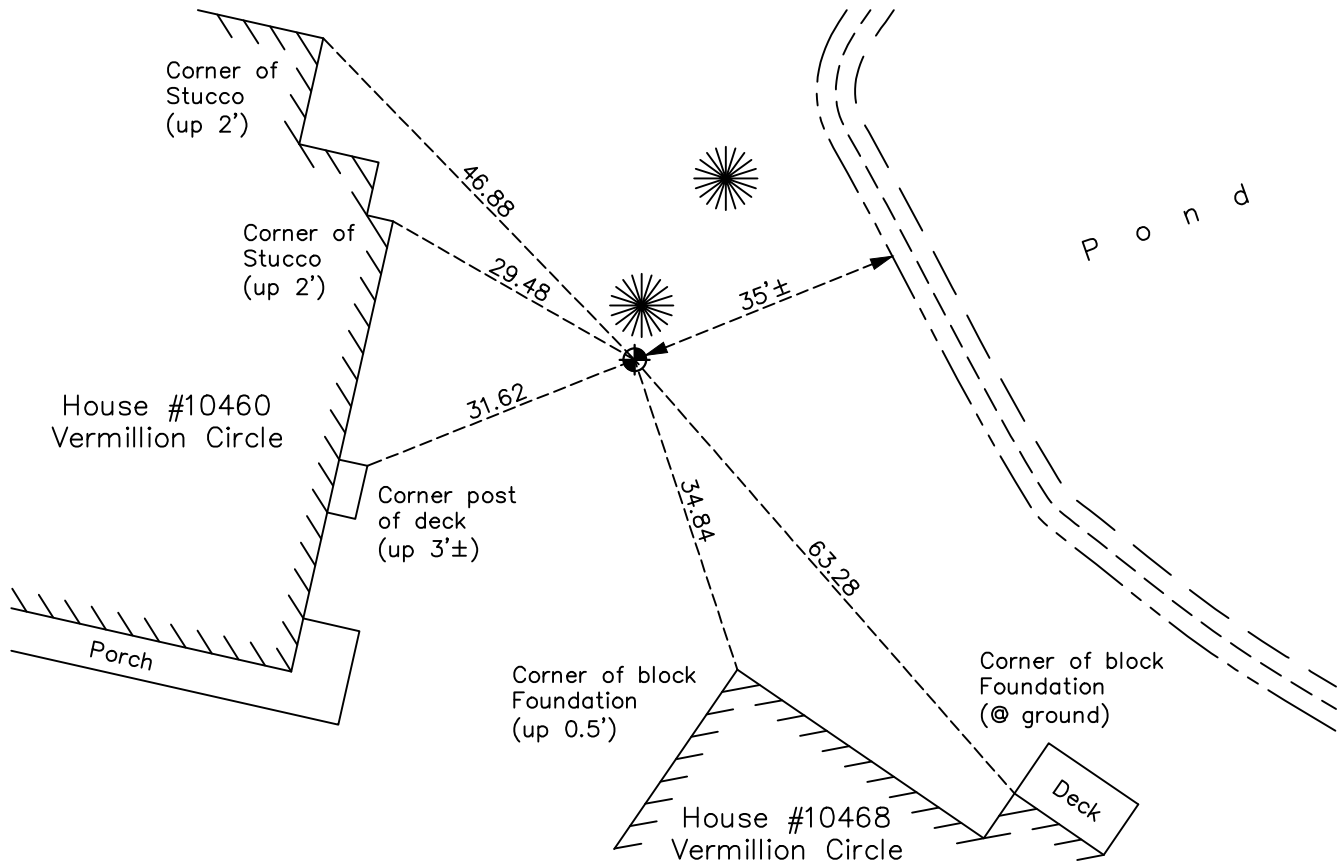
West 1/4 Corner of Sec. 22 Township 31 Range 23

On the 24th day of July, 1968, the described corner was evidenced by a 1" axle shaft

and to perpetuate the location of said corner, at the exact location thereof, a permanent marker was placed consisting of a cast iron monument

AND on the 5th day of May, 2022, said permanent marker was found down 1'± and the ties were updated.

Updated reference ties are as shown below.



Revision Date
08/12/2022

N.A.D. 1983 Coordinates
 (1996 Adjustment)

County Project Coordinates	
Northing	<u>145780.6585</u>
Easting	<u>516090.1562</u>
Date	<u>10/27/98</u>

I hereby certify that this United States public land survey monument record is correct and complete to the best of my knowledge and belief.
David Zieglmeier Date 2/28/23
 David Zieglmeier Anoka County Surveyor
 Minnesota License Number 46179

HISTORY OF GOVERNMENT CORNER

Page No. 70

County of Anoka

State of Minnesota

West 1/4 Corner of Sec. 22 Township 31 Range 23

CORNER HISTORY:

June 4, 1959 - Found 1" axle shaft up 0.2'± by Wayne L. Ridge.

September 3, 1964 - Found 1" axle shaft and established ties to axle shaft.

July 24, 1968 - Found 1" axle shaft and replaced with a cast iron monument up 0.3'±. Updated ties.

October 5, 1971 - Found cast iron monument and updated ties.

April 17, 1973 - Replaced cast iron monument and updated ties.

May 19, 1975 - Found cast iron monument and updated ties.

August 22, 1977 - Found cast iron monument and updated ties.

June 6, 1980 - Found cast iron monument and updated ties.

June 3, 1986 - Found cast iron monument and updated ties.

July 23, 1990 - Found cast iron monument and updated ties.

June 9, 1995 - Found cast iron monument and updated ties.

October 27, 1998 - Found cast iron monument and updated ties. Established NAD 1983 (1996 adj.) Anoka County project coordinates by static GPS methods.

June 21, 2006 - Found cast iron monument and updated ties.

June 10, 2014 - Found cast iron monument down 1'± and updated ties.

June 20, 2019 - Found cast iron monument down 1'±. Verified position by VRS GPS methods. Updated ties.

May 5, 2022 - Found cast iron monument down 1'±. Verified position by VRS GPS methods. Updated ties.