

CERTIFICATE OF LOCATION OF GOVERNMENT CORNER

County of Anoka

State of Minnesota

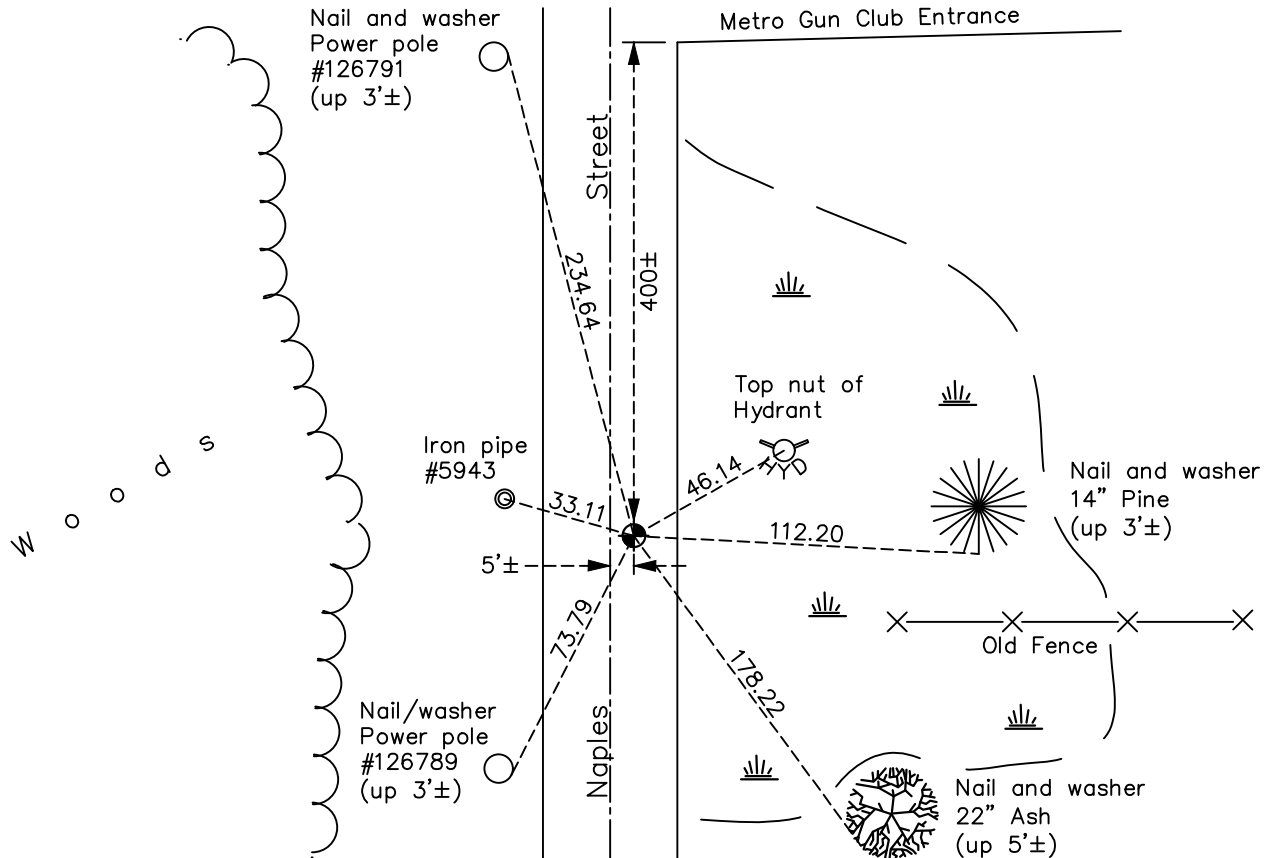
East 1/4 Corner of Sec. 22 Township 31 Range 23

On the 13th day of November, 1964, the described corner was evidenced by area resurvey

and to perpetuate the location of said corner, at the exact location thereof, a permanent marker was placed consisting of a cast iron monument

AND on the 12th day of May, 2022, said permanent marker was found flush and the ties were updated

Updated reference ties are as shown below.



N.A.D. 1983 Coordinates
(1996 Adjustment)

County Project Coordinates

Northing 145672.0127

Easting 521357.3885

Date 10/27/98

I hereby certify that this United States public land survey monument record is correct and complete to the best of my knowledge and belief.

David Zieglmeier Date 2/28/23

David Zieglmeier Anoka County Surveyor

Minnesota License Number 46179

Revision Date

08/12/22

HISTORY OF GOVERNMENT CORNER

Page No. 71

County of Anoka

State of Minnesota

East 1/4 Corner of Sec. 22 Township 31 Range 23

CORNER HISTORY:

November 13, 1964 - Set cast iron monument flush using area resurvey. Established ties to monument.

August 6, 1968 - Found cast iron monument and updated ties.

October 15, 1970 - Found cast iron monument and added additional corner ties prior to road construction.

May 19, 1975 - Found cast iron monument and updated ties.

September 22, 1976 - Set cast iron monument flush after road construction and updated ties.

July 3, 1990 - Found cast iron monument and updated ties.

June 9, 1995 - Found cast iron monument and updated ties.

October 27, 1998 - Found cast iron monument, established NAD 1983 (1996 adj.) Anoka County project coordinates by static GPS methods and updated ties.

June 20, 2006 - Found cast iron monument missing. Set cast iron monument and updated ties.

June 24, 2014 - Found cast iron monument and updated ties.

June 20, 2019 - Found cast iron monument. Verified position by VRS GPS methods. Updated ties.

May 12, 2022 - Found cast iron monument flush. Verified position by VRS GPS methods. Updated ties.