

CERTIFICATE OF LOCATION OF GOVERNMENT CORNER

County of Anoka

State of Minnesota

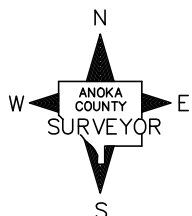
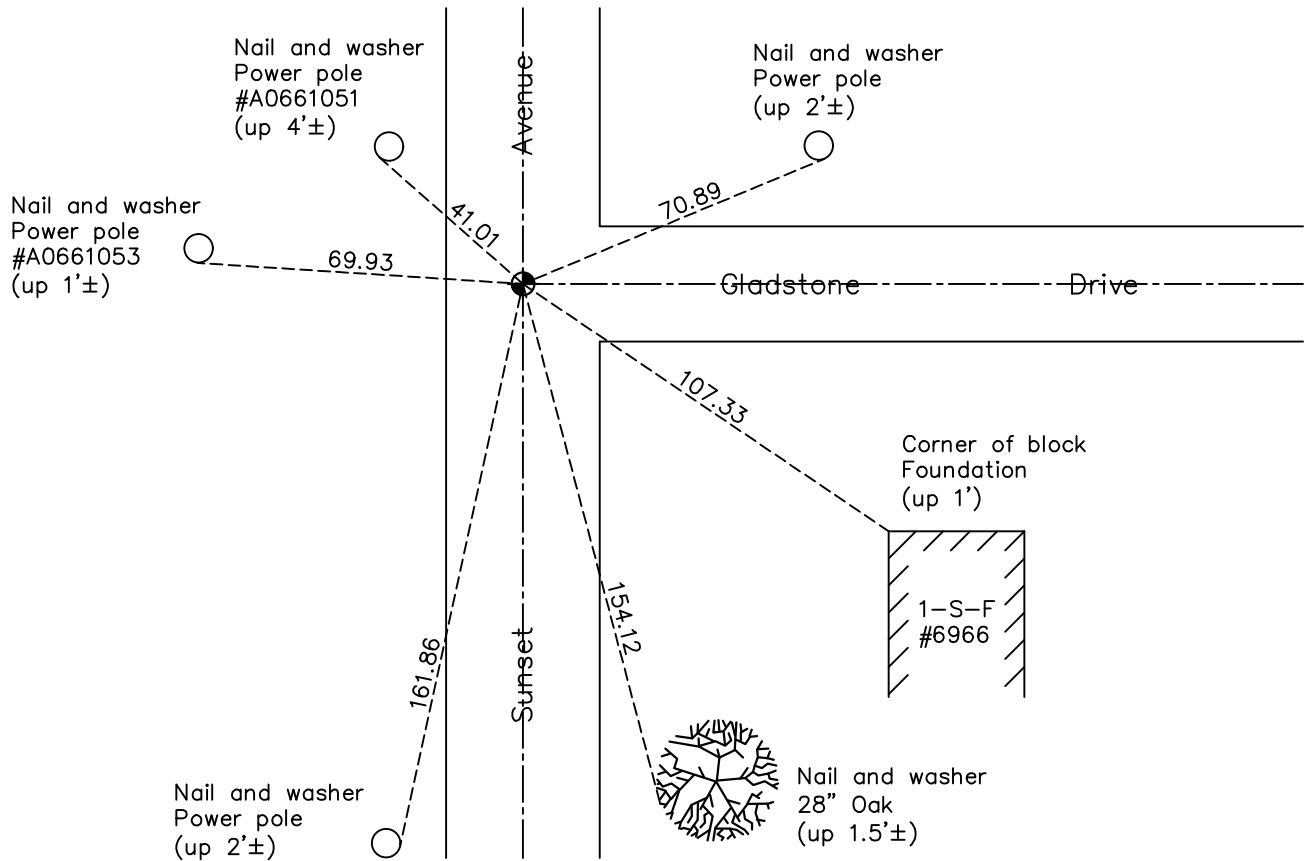
East 1/4 Corner of Sec. 24 Township 31 Range 23

On the 26th day of July, 1965, the described corner was evidenced by a bent iron pipe

and to perpetuate the location of said corner, at the exact location thereof, a permanent marker was placed consisting of a cast iron monument

AND on the 17th day of May, 2022, said permanent marker was found flush and the ties were updated.

Updated reference ties are as shown below.



Revision Date
08/12/22

N.A.D. 1983 Coordinates
(1996 Adjustment)

County Project Coordinates	
Northing	<u>145572.8399</u>
Easting	<u>531938.2376</u>
Date	<u>6/11/98</u>

I hereby certify that this United States public land survey monument record is correct and complete to the best of my knowledge and belief.

David Zieglmeier Date 2/28/23

David Zieglmeier Anoka County Surveyor
Minnesota License Number 46179

HISTORY OF GOVERNMENT CORNER

Page No. 74

County of Anoka

State of Minnesota

East 1/4 Corner of Sec. 24 Township 31 Range 23

CORNER HISTORY:

Unknown date - Found railroad spike by Carley.

September 18, 1959 - Found a bent iron pipe down 1' with a rail road spike 0.1' to the East by Bill Rodgers. Established ties.

June 10, 1964 - Found a bent iron pipe down 1' with a rail road spike 0.1' to the East. Updated ties.

July 26, 1965 - Found a bent iron pipe down 1' with a rail road spike 0.1' to the East and replaced with a cast iron monument. Updated ties.

July 18, 1968 - Found cast iron monument and updated ties.

October 5, 1971 - Found cast iron monument and updated ties.

May 20, 1975 - Found cast iron monument and updated ties.

August 23, 1977 - Found cast iron monument and updated ties.

June 2, 1980 - Found cast iron monument and updated ties.

September 8, 1986 - Found cast iron monument and added additional ties prior to construction. Removed monument.

Unknown date - Set cast iron monument after construction.

June 29, 1990 - Found cast iron monument and updated ties.

June 6, 1995 - Found cast iron monument and updated ties.

June 11, 1998 - Found cast iron monument and updated ties. Established NAD 1983 (1996 adj.) Anoka County project coordinates by static GPS methods.

June 28, 2006 - Found cast iron monument and updated ties.

May 28, 2014 - Found cast iron monument broken, checked position by VRS GPS methods and corner tie distances against center fin of monument.

July 8, 2014 - Set cast iron monument flush using static GPS methods. Verified position by VRS GPS methods. Updated ties.

June 14, 2016 - Found cast iron monument, set construction ties and updated corner ties prior to road construction. Removed monument.

October 18, 2016 - Set cast iron monument flush using static GPS methods after construction. Updated ties.

July 2, 2019 - Found cast iron monument. Verified position by VRS GPS methods. Updated ties.

May 17, 2022 - Found cast iron monument flush. Verified position by VRS GPS methods. Updated ties.