

# CERTIFICATE OF LOCATION OF GOVERNMENT CORNER

County of Anoka

State of Minnesota

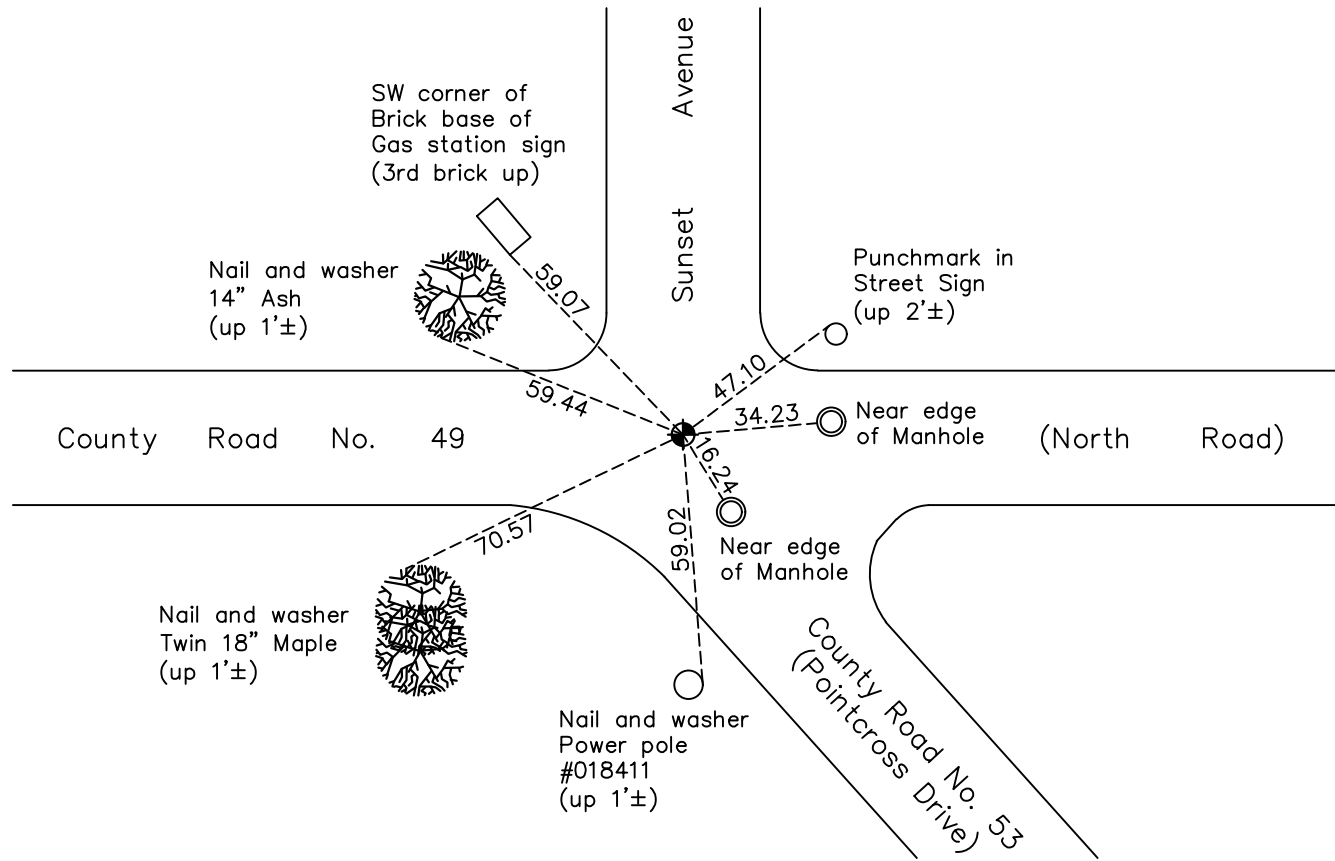
## Northeast Corner of Sec. 25 Township 31 Range 23

On the 19th day of June, 1954, the described corner was evidenced by a 1 1/2" solid iron bar

and to perpetuate the location of said corner, at the exact location thereof, a permanent marker was placed consisting of a cast iron monument

AND on the 13th day of May, 2022, said permanent marker was found flush and the ties were updated

Updated reference ties are as shown below.



Revision Date  
08/12/22

N.A.D. 1983 Coordinates  
 (1996 Adjustment)

County Project Coordinates	
Northing	<u>142922.1174</u>
Easting	<u>531921.1990</u>
Date	<u>6/25/98</u>

I hereby certify that this United States public land survey monument record is correct and complete to the best of my knowledge and belief.

David Zieglmeier Date 2/28/23

David Zieglmeier Anoka County Surveyor  
 Minnesota License Number 46179

# HISTORY OF GOVERNMENT CORNER

Page No. 75

County of Anoka

State of Minnesota

## Northeast Corner of Sec. 25 Township 31 Range 23

### **CORNER HISTORY:**

June 19, 1954 - Found 1 1/2" solid iron and established ties to iron by Milner W. Carley.

July 3, 1956 - Found 1 1/2" solid iron and a 6" x 6" granite witness corner to the north. Updated ties by County Highway Department.

March 8, 1962 - Found 1 1/2" solid iron and a 6" x 6" granite witness corner down 1' to the north. Updated ties.

June 10, 1964 - Found 1 1/2" solid iron and a 6" x 6" granite witness corner down 1' to the north. Updated ties.

August 12, 1968 - Found 1 1/2" solid iron and a 6" x 6" granite witness corner to the north. Replaced 1 1/2" solid iron with a cast iron monument flush and updated ties.

October 5, 1971 - Found cast iron monument and a 6" x 6" granite witness corner to the north. Updated ties.

May 29, 1975 - Found cast iron monument and a 6" x 6" granite witness corner to the north. Updated ties.

August 22, 1977 - Found cast iron monument and a 6" x 6" granite witness corner to the north. Updated ties.

July 30, 1986 - Found cast iron monument and added additional ties prior to road construction. Removed monument.

Unknown date - set cast iron monument after construction.

June 29, 1990 - Found cast iron monument and updated ties.

June 6, 1995 - Found cast iron monument and updated ties.

June 25, 1998 - Found cast iron monument and updated ties. Established NAD 1983 (1996 adj.) Anoka County project coordinates by static GPS methods.

June 22, 2006 - Found cast iron monument and updated ties.

August 10, 2009 - Found cast iron monument down, raised flush and updated ties.

July 2, 2014 - Found cast iron monument and updated ties.

July 2, 2019 - Found cast iron monument. Verified position by VRS GPS methods. Updated ties.

May 13, 2022 - Found cast iron monument flush. Verified position by VRS GPS methods. Updated ties.