

# CERTIFICATE OF LOCATION OF GOVERNMENT CORNER

County of Anoka

State of Minnesota

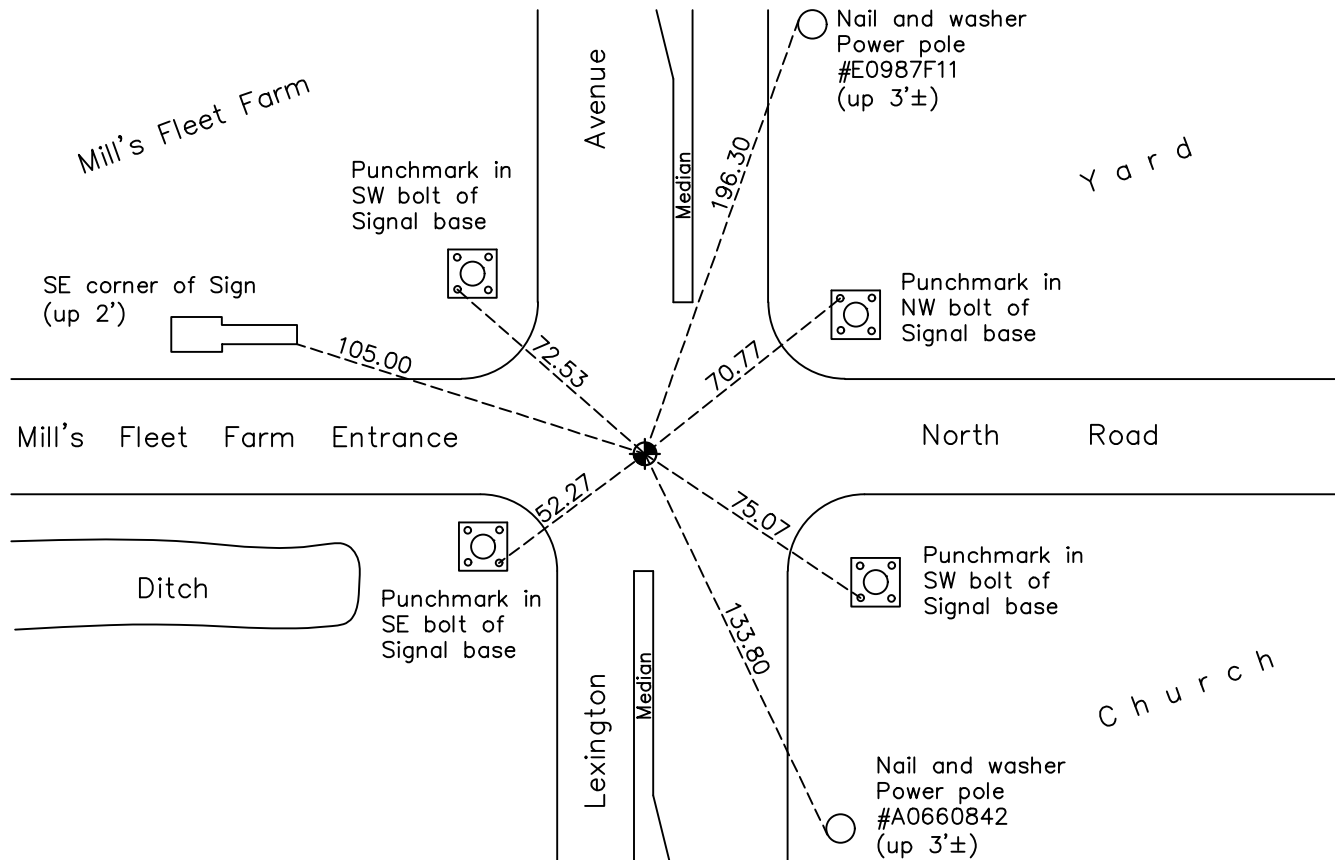
## Northwest Corner of Sec. 25 Township 31 Range 23

On the 23rd day of June, 1959, the described corner was evidenced by a concrete monument

and to perpetuate the location of said corner, at the exact location thereof, a permanent marker was placed consisting of a cast iron monument

AND on the 24th day of May, 2023, said permanent marker was set cast iron monument after road construction, verified using RTK GPS methods. Updated ties.

Updated reference ties are as shown below.



Revision Date

5/31/2023

N.A.D. 1983 Coordinates  
(1996 Adjustment)

County Project Coordinates	
Northing	<u>143010.4778</u>
Easting	<u>526642.0679</u>
Date	<u>10/09/98</u>

I hereby certify that this United States public land survey monument record is correct and complete to the best of my knowledge and belief.

David Zieglmeier Date 6/28/23

David Zieglmeier Anoka County Surveyor  
Minnesota License Number 46179

# HISTORY OF GOVERNMENT CORNER

Page No. 77

County of Anoka

State of Minnesota

## Northwest Corner of Sec. 25 Township 31 Range 23

### **CORNER HISTORY:**

September 6, 1943 - Found 2" x 3' iron flush with road. Replaced iron with a concrete monument down 2" and established ties to concrete by Harvey Cartwright.

July 2, 1956 - Found iron and updated ties.

June 23, 1959 - Jim Blevens of Northern Natural Gas Co. assisting, Found a concrete monument broken off down 21" with base in place. Ties by Harvey Cartwright gone. Placed a 20" cast iron monument on top of concrete monument down 1/2" and updated ties.

6/10/64, 7/19/68, 9/28/71, 5/22/75 - Found cast iron monument and updated ties.

September 26, 1975 - Found cast iron monument down and raised flush.

8/22/77, 6/3/80, 7/19/90, 6/26/95 - Found cast iron monument and updated ties.

April 16, 1997 - Found cast iron monument and set construction ties prior to road construction.

June 1, 1998 - Set cast iron monument flush after road construction and updated ties.

October 9, 1998 - Established NAD 1983 (1996 adj.) Anoka County project coordinates by static GPS methods.

10/15/98, 6/12/06 - Found cast iron monument and updated ties.

June 26, 2014 - Found cast iron monument broken and in need of reset. Checked position with corner ties.

July 9, 2014 - Set cast iron monument flush using static GPS methods. Verified position by VRS GPS methods and updated ties.

July 30, 2019 - Found cast iron monument broken

May 12, 2020 - Replaced broken cast iron monument with new cast iron monument flush. Updated ties.

May 24, 2023 - set cast iron monument after road construction, verified position using RTK GPS methods. Updated ties. Job no. 22-131