

CERTIFICATE OF LOCATION OF GOVERNMENT CORNER

County of Anoka

State of Minnesota

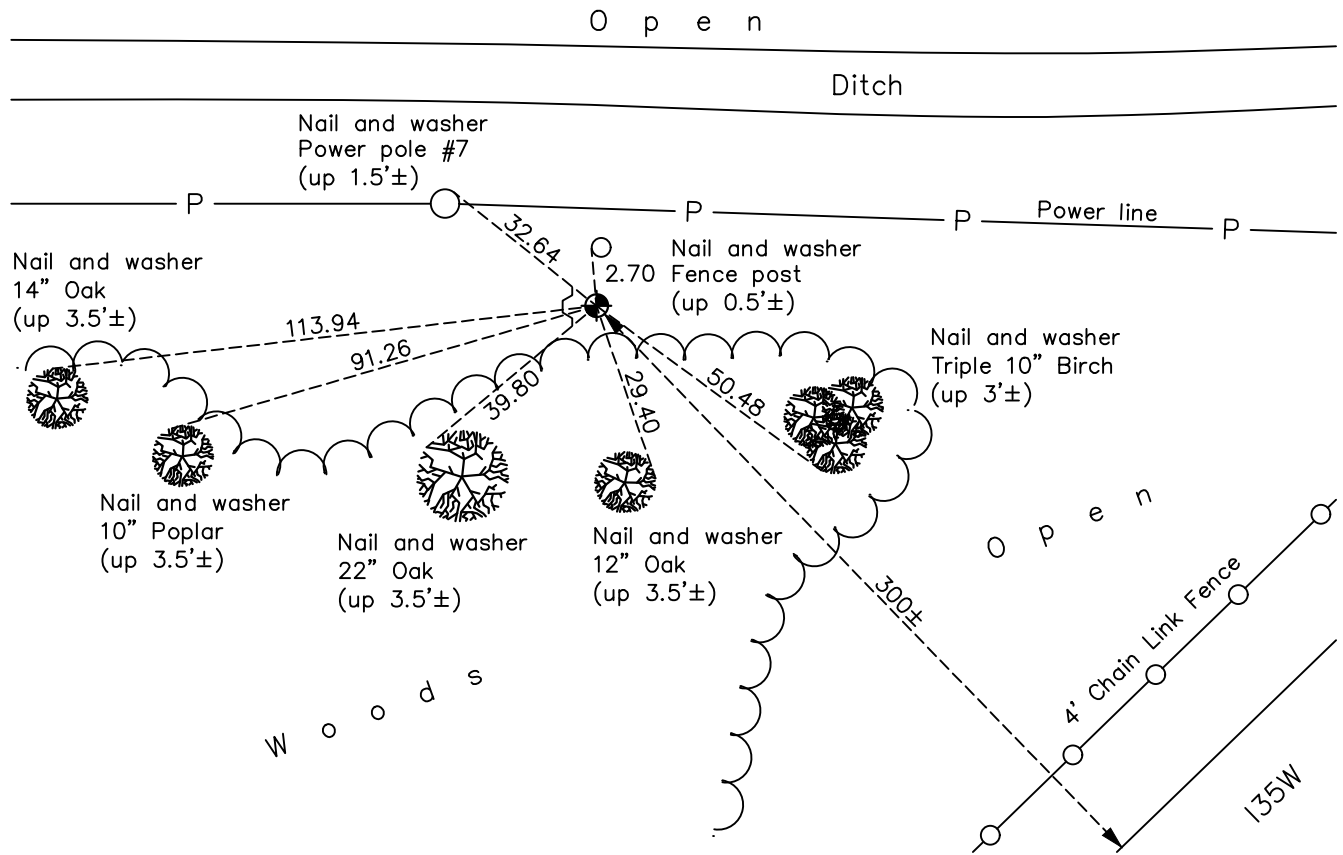
North $\frac{1}{4}$ Corner of Sec. 26 Township 31 Range 23

On the 7th day of November, 1961, the described corner was evidenced by a concrete monument

and to perpetuate the location of said corner, at the exact location thereof, a permanent marker was placed consisting of a cast iron monument with a sign and post on the west side

AND on the 24th day of May, 2022, said permanent marker was found flush and the ties were updated

Updated reference ties are as shown below.



Revision Date
08/12/22

N.A.D. 1983 Coordinates
(1996 Adjustment)

County Project Coordinates	
Northing	<u>143024.5572</u>
Easting	<u>523965.7476</u>
Date	<u>2/04/00</u>

I hereby certify that this United States public land survey monument record is correct and complete to the best of my knowledge and belief.

David Zieglmeier Date 2/28/23

David Zieglmeier Anoka County Surveyor
Minnesota License Number 46179

HISTORY OF GOVERNMENT CORNER

Page No. 78

County of Anoka

State of Minnesota

North 1/4 Corner of Sec. 26 Township 31 Range 23

CORNER HISTORY:

November 17, 1945 - Harvey Cartwright set concrete monument on true line between section corners and on the production of lines of platting to the South. Established ties to monument.

December 1956 - Found concrete monument down 2".

June 16, 1959 - Found concrete monument and updated ties by Jim Blevens of Northern Natural Gas Co.

November 7, 1961 - Found concrete monument flush and placed a 1/2" iron pipe on the N. side. Updated ties.

April 3, 1962 - Found concrete monument and replaced with a cast iron monument. Updated ties.

June 19, 1964 - Found cast iron monument and updated ties.

March 16, 1966 - Set sign and post to the Northwest of monument.

July 23, 1968 - Found cast iron monument and updated ties.

September 28, 1971 - Found cast iron monument and updated ties.

May 20, 1975 - Found cast iron monument and updated ties.

August 22, 1977 - Found cast iron monument and updated ties.

June 3, 1980 - Found cast iron monument and updated ties.

August 1, 1990 - Found cast iron monument and updated ties.

August 2, 1995 - Found cast iron monument and updated ties.

February 4, 2000 - Found cast iron monument, established NAD 1983 (1996 adj.) Anoka County project coordinates by static GPS methods and updated ties.

June 22, 2006 - Found cast iron monument broken off and in need of reset.

June 27, 2006 - Replaced broken cast iron monument with new cast iron monument and updated ties.

June 25, 2014 - Found cast iron monument and updated ties.

September 23, 2019 - Found cast iron monument flush, verified position by VRS GPS methods and updated ties.

May 24, 2022 - Found cast iron monument flush, verified position by VRS GPS methods and updated ties.