

CERTIFICATE OF LOCATION OF GOVERNMENT CORNER

County of Anoka

State of Minnesota

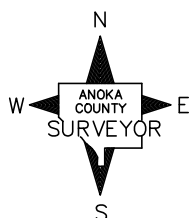
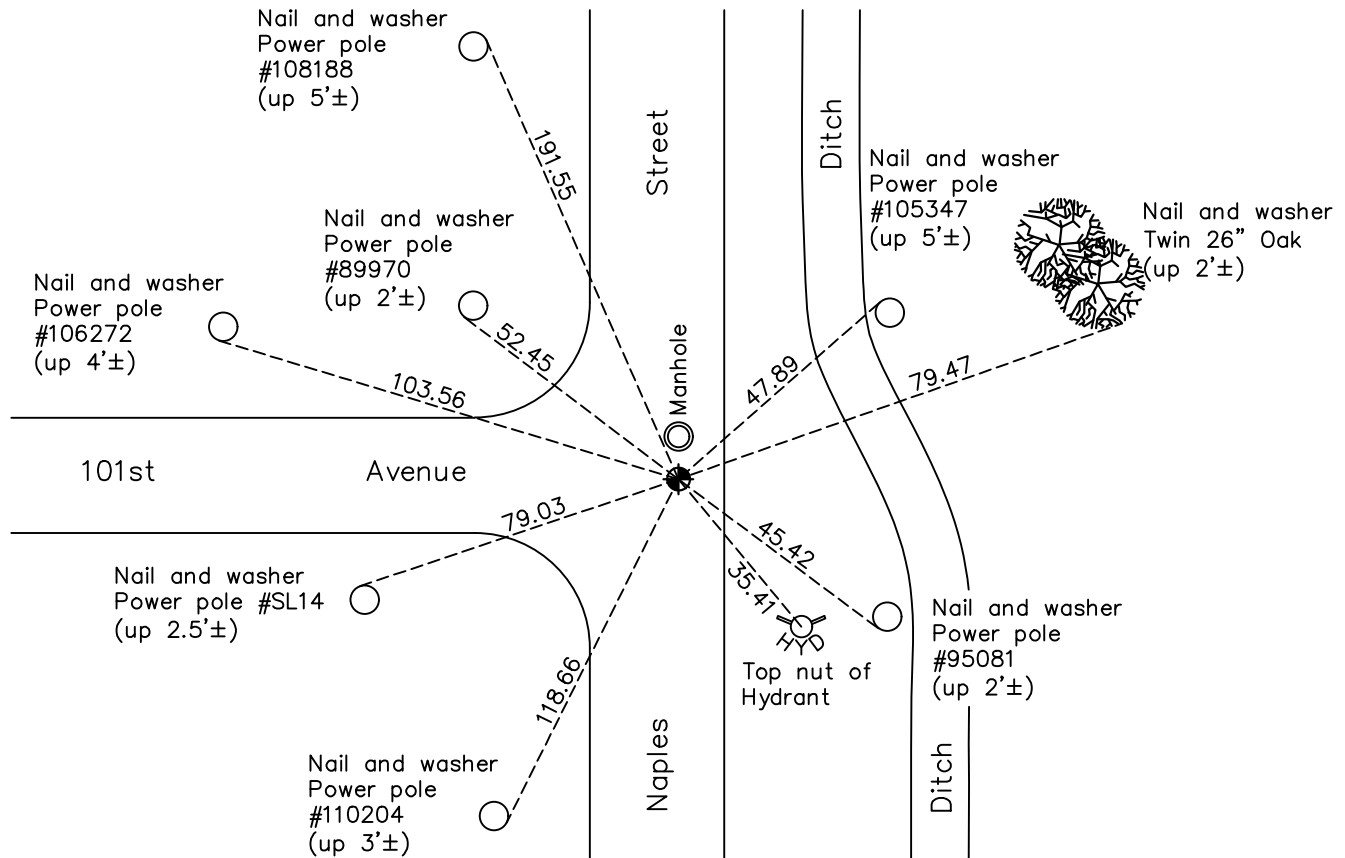
Northeast Corner of Sec. 27 Township 31 Range 23

On the 23rd day of July, 1968, the described corner was evidenced by a concrete monument

and to perpetuate the location of said corner, at the exact location thereof, a permanent marker was placed consisting of a 3/4 partial CIM down 0.1'± on south side of manhole

AND on the 12th day of May, 2022, said permanent marker was found down 0.1'± Updated ties.

Updated reference ties are as shown below.



Revision Date
08/12/22

N.A.D. 1983 Coordinates
(1996 Adjustment)

County Project Coordinates	
Northing	<u>143037.9495</u>
Easting	<u>521334.5342</u>
Date	<u>10/27/98</u>

I hereby certify that this United States public land survey monument record is correct and complete to the best of my knowledge and belief.

Date _____

David Zieglmeier Anoka County Surveyor
Minnesota License Number 46179

HISTORY OF GOVERNMENT CORNER

Page No. 79

County of Anoka

State of Minnesota

Northeast Corner of Sec. 27 Township 31 Range 23

CORNER HISTORY:

December 5, 1945 - Found old iron monument in road and replaced with a concrete monument by Harvey Cartwright. Established ties to monument.

November 7, 1955 - Found concrete monument down 2" and updated ties by Charles O. George.

December 1956 - Found concrete monument down 2" and updated ties.

November 6, 1961 - Found 4" x 6" concrete monument down 2" and updated ties.

June 10, 1964 - Found concrete monument and updated ties.

July 23, 1968 - Found concrete monument and replaced with a cast iron monument down 0.5'±. Updated ties.

May 14, 1971 - Found cast iron monument and updated ties.

September 28, 1971 - Found cast iron monument and updated ties.

May 19, 1975 - Found cast iron monument and updated ties.

September 22, 1976 - Reset cast iron monument flush after construction and updated ties.

June 6, 1980 - Found cast iron monument and updated ties.

June 3, 1986 - Found cast iron monument and updated ties.

July 3, 1990 - Found cast iron monument and updated ties.

June 9, 1995 - Found cast iron monument and updated ties.

June 20, 1995 - Reset with a capped 1/2" iron pipe just south of manhole in road. Updated ties.

October 27, 1998 - Found 1/2" iron pipe, established NAD 1983 (1996 adj.) Anoka County project coordinates by static GPS methods and updated ties.

September 8, 1999 - Found 1/2" iron pipe and added construction ties prior to road construction.

July 13, 2005 - Found 1/2" iron pipe and updated ties.

June 12, 2006 - Found 1/2" iron pipe and updated ties.

June 24, 2014 - Found temporary P.K. nail and needing a monument. Checked corner ties to P.K. nail.

July 8, 2014 - Found P.K. nail and replaced with a cast iron monument using static GPS methods. Verified position by VRS GPS methods and updated ties.

April 1, 2020 - Found cast iron monument missing after road construction. Reset with 3/4 partial cast iron monument flush using static GPS methods. Updated ties.

HISTORY OF GOVERNMENT CORNER

Page No. 79

County of Anoka

State of Minnesota

Northeast Corner of Sec. 27 Township 31 Range 23

CORNER HISTORY:

May 12, 2022 - Found 3/4 Partial CIM down 0.1'± on south side of manhole, verified position by VRS GPS methods and updated ties.