

# CERTIFICATE OF LOCATION OF GOVERNMENT CORNER

County of Anoka

State of Minnesota

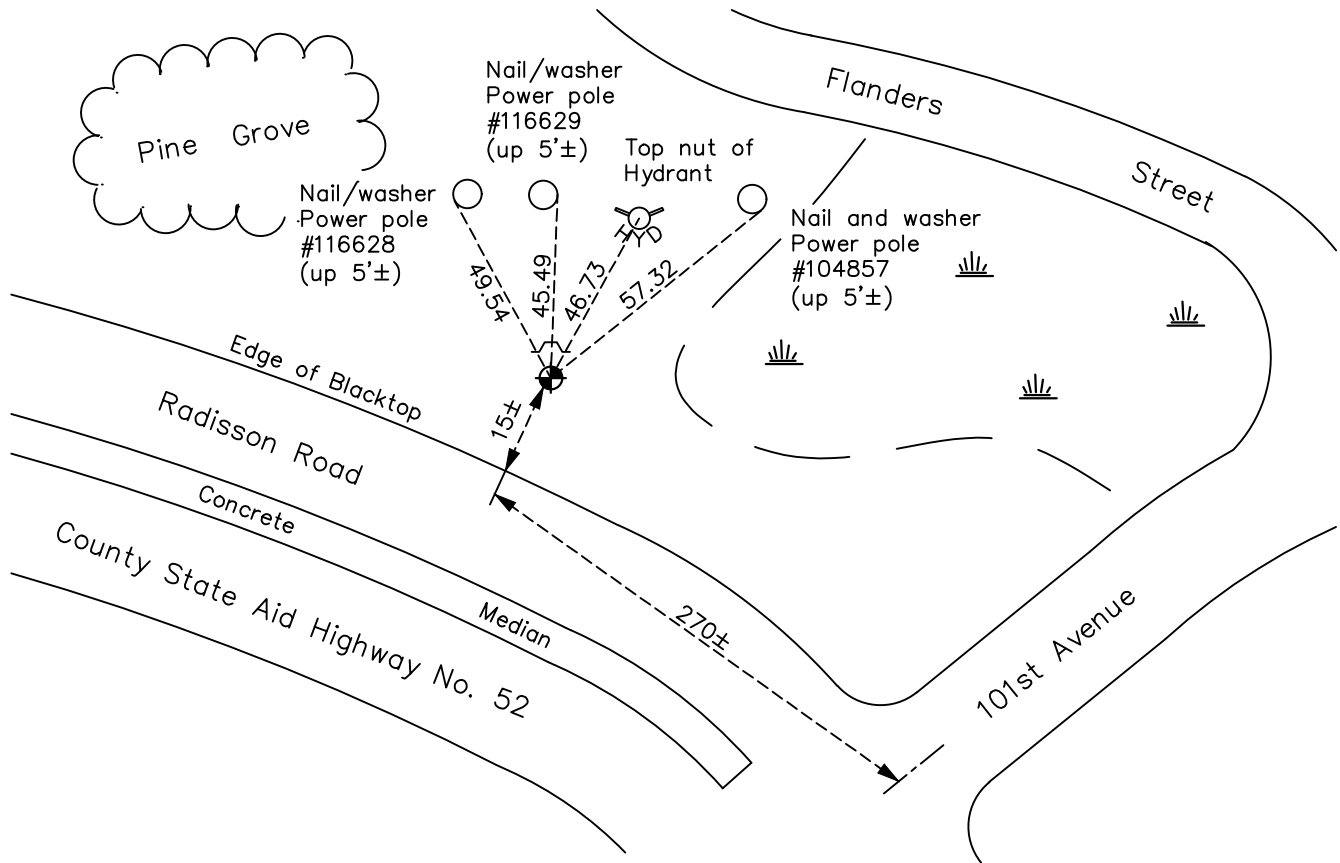
## North 1/4 Corner of Sec. 27 Township 31 Range 23

On the 24th day of July, 1968, the described corner was evidenced by a granite monument

and to perpetuate the location of said corner, at the exact location thereof, a permanent marker was placed consisting of a cast iron monument with a sign and post on the north side

AND on the 2nd day of April, 2022, said permanent marker was found down 0.5'± and the ties were updated

Updated reference ties are as shown below.



Revision Date  
08/12/22

N.A.D. 1983 Coordinates  
 (1996 Adjustment)

County Project Coordinates	
Northing	<u>143083.0197</u>
Easting	<u>518694.8375</u>
Date	<u>10/27/98</u>

I hereby certify that this United States public land survey monument record is correct and complete to the best of my knowledge and belief.

*David Zieglmeier* Date 2/28/23

David Zieglmeier Anoka County Surveyor  
 Minnesota License Number 46179

# HISTORY OF GOVERNMENT CORNER

Page No. 80

County of Anoka

State of Minnesota

## North 1/4 Corner of Sec. 27 Township 31 Range 23

### **CORNER HISTORY:**

August 1956 - Found stone monument and established ties to stone by C. O. Georgi.

November 6, 1961 - Found 3/4" iron down 1' using ties from C. O. Georgi and updated ties.

June 10, 1964 - Found 3/4" iron and updated ties.

July 24, 1968 - Found 6" x 6" granite monument down 1.35' and set cast iron monument flush. Updated ties.

May 19, 1975 - Found cast iron monument and updated ties.

August 22, 1977 - Found cast iron monument down 0.5'± and updated ties.

June 11, 1980 - Found cast iron monument and updated ties.

June 29, 1990 - Found cast iron monument and updated ties.

July 24, 1992 - Reset cast iron monument after construction using area resurvey. Updated ties.

June 20, 1995 - Replaced cast iron monument and updated ties.

October 27, 1998 - Found cast iron monument, established NAD 1983 (1996 adj.) Anoka County project coordinates by static GPS methods and updated ties.

September 16, 1999 - Found cast iron monument, set construction ties and updated corner ties prior to road construction. Removed monument.

December 16, 1999 - Set cast iron monument flush after road construction and updated ties.

June 21, 2006 - Found cast iron monument and updated ties.

June 16, 2014 - Found cast iron monument down 0.5'±. Verified position by VRS GPS methods. Updated ties.

June 26, 2019 - Found cast iron monument down 0.5±. Verified position by VRS GPS methods. Updated ties.

April 2, 2022- Found cast iron monument down 0.5±. Verified position by VRS GPS methods. Updated ties.