

# CERTIFICATE OF LOCATION OF GOVERNMENT CORNER

County of Anoka

State of Minnesota

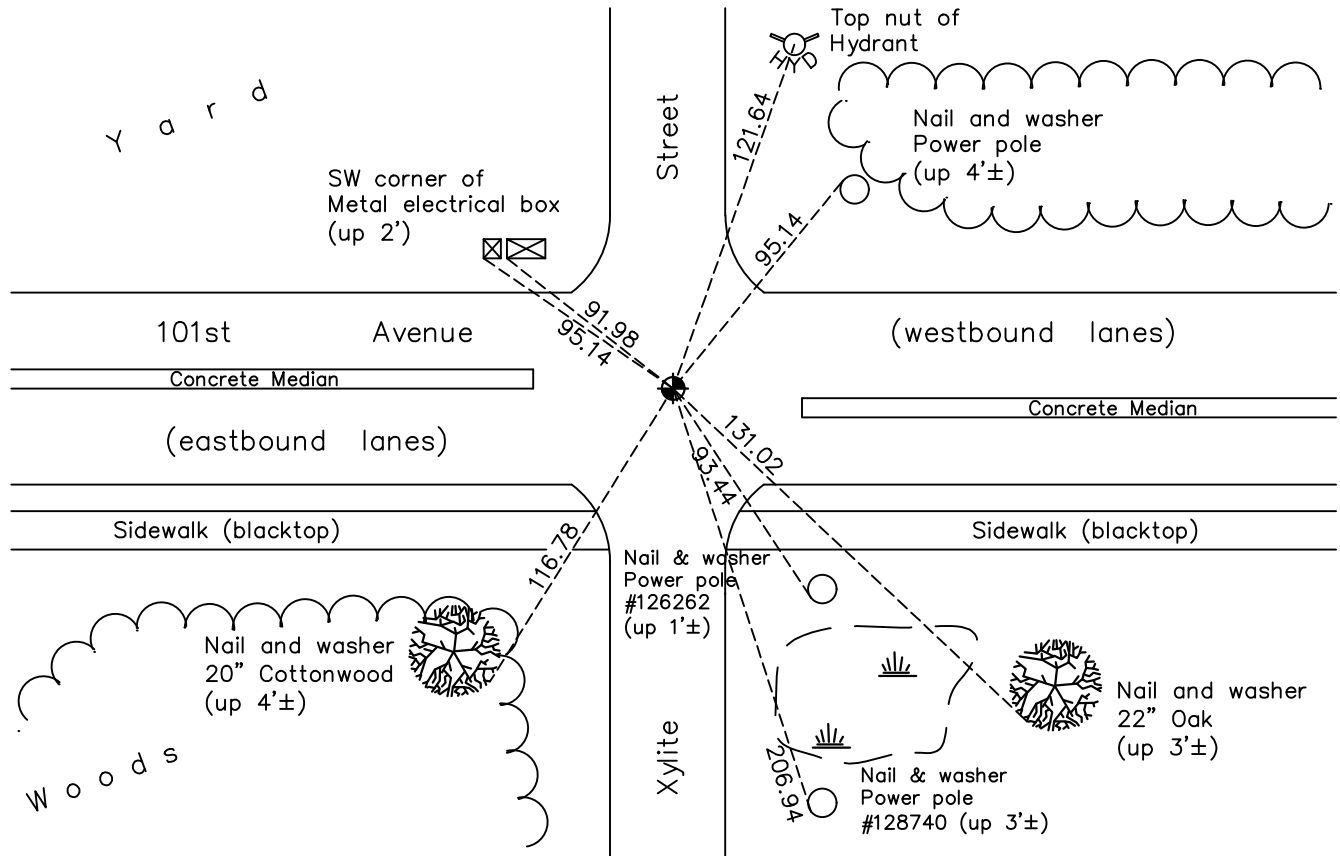
## Northwest Corner of Sec. 27 Township 31 Range 23

On the 6th day of November, 1961, the described corner was evidenced by a granite monument

and to perpetuate the location of said corner, at the exact location thereof, a permanent marker was placed consisting of a cast iron monument

AND on the 28th day of September, 2022, said permanent marker was Reset CIM flush to surface after road construction, ties were updated.

Updated reference ties are as shown below.



Revision Date  
10/19/2022

N.A.D. 1983 Coordinates  
(1996 Adjustment)

County Project Coordinates	
Northing	<u>143126.9282</u>
Easting	<u>516055.6041</u>
Date	<u>10/27/98</u>

I hereby certify that this United States public land survey monument record is correct and complete to the best of my knowledge and belief.

*David Zieglmeier* Date 2/28/23

David Zieglmeier Anoka County Surveyor  
 Minnesota License Number 46179

# HISTORY OF GOVERNMENT CORNER

Page No. 81

County of Anoka

State of Minnesota

## Northwest Corner of Sec. 27 Township 31 Range 23

### **CORNER HISTORY:**

May 1925 - Found stone monument and established ties to monument by Egan, Field & Novak.

Unknown date - Found stone monument and updated ties by Carley.

November 6, 1961 - Found granite monument down 1' with a 1/2" iron on the North side and updated ties.

June 10, 1964 - Found granite monument and updated ties.

July 23, 1968 - Found granite monument and updated ties.

September 23, 1971 - Found granite monument and updated ties.

May 20, 1975 - Found granite monument and updated ties.

August 19, 1977 - Found granite monument down 2'± and updated ties.

June 6, 1980 - Found granite monument and updated ties.

July 18, 1990 - Found granite monument and updated ties.

July 21, 1992 - Set cast iron monument flush using area resurvey after road construction and updated ties.

June 9, 1995 - Found cast iron monument and updated ties.

October 27, 1998 - Found cast iron monument, established NAD 1983 (1996 adj.) Anoka County project coordinates by static GPS methods and updated ties.

August 28, 2002 - Found cast iron monument, set construction ties and updated corner ties prior to road construction. Removed monument.

June 21, 2006 - Found cast iron monument and updated ties.

June 16, 2014 - Found cast iron monument, verified position by VRS GPS methods and updated ties.

July 31, 2019 - Found cast iron monument broken. Tied CIM to center fin.

May 15, 2020 - Partially removed found broken cast iron monument. Set partial cast iron monument. Verified position by VRS GPS methods. Updated ties.

September 28, 2022 - Reset cast iron monument flush to surface after road construction, using static GPS, and updated ties.