

CERTIFICATE OF LOCATION OF GOVERNMENT CORNER

County of Anoka

State of Minnesota

South 1/4 Corner of Sec. 21 Township 31 Range 23

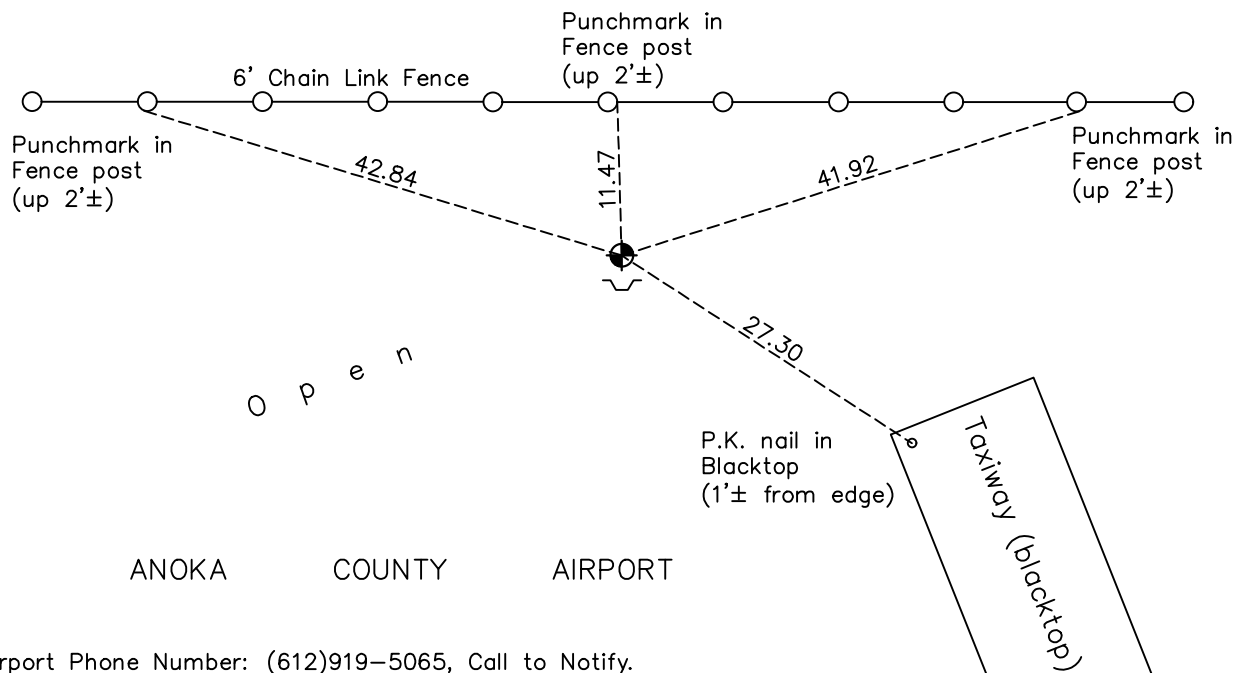
On the 30th day of October, 1964, the described corner was evidenced by area resurvey

and to perpetuate the location of said corner, at the exact location thereof, a permanent marker was placed consisting of a cast iron monument with a sign and post on the south side

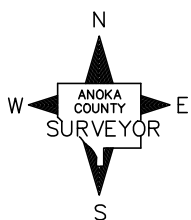
AND on the 11th day of May, 2022, said permanent marker was found flush and the ties were updated

Updated reference ties are as shown below.

North Airport Road NE (blacktop)



*Airport Phone Number: (612)919-5065, Call to Notify.



Revision Date

08/12/22

N.A.D. 1983 Coordinates
(1996 Adjustment)

County Project Coordinates	
Northing	143112.2195
Easting	513409.0901
Date	8/26/99

I hereby certify that this United States public land survey monument record is correct and complete to the best of my knowledge and belief.

David Zieglmeier Date 2/28/23

David Zieglmeier Anoka County Surveyor
Minnesota License Number 46179

HISTORY OF GOVERNMENT CORNER

Page No. 82

County of Anoka

State of Minnesota

South 1/4 Corner of Sec. 21 Township 31 Range 23

CORNER HISTORY:

October 30, 1964 - Set cast iron monument using area resurvey and established ties to monument.

July 23, 1968 - Found cast iron monument and updated ties.

May 20, 1975 - Found cast iron monument and updated ties.

August 19, 1977 - Found cast iron monument and updated ties.

June 16, 1981 - Found cast iron monument and updated ties.

July 16, 1990 - Found cast iron monument and updated ties.

August 2, 1995 - Found cast iron monument and updated ties.

August 26, 1999 - Found cast iron monument, established NAD 1983 (1996 adj.) Anoka County project coordinates by static GPS methods and updated ties.

July 21, 2014 - Found cast iron monument, verified position by VRS GPS methods and updated ties.

June 25, 2019 - Found cast iron monument, verified position by VRS GPS methods and updated ties.

May 11, 2022 - Found cast iron monument flush, verified position by VRS GPS methods and updated ties.