

CERTIFICATE OF LOCATION OF GOVERNMENT CORNER

County of Anoka

State of Minnesota

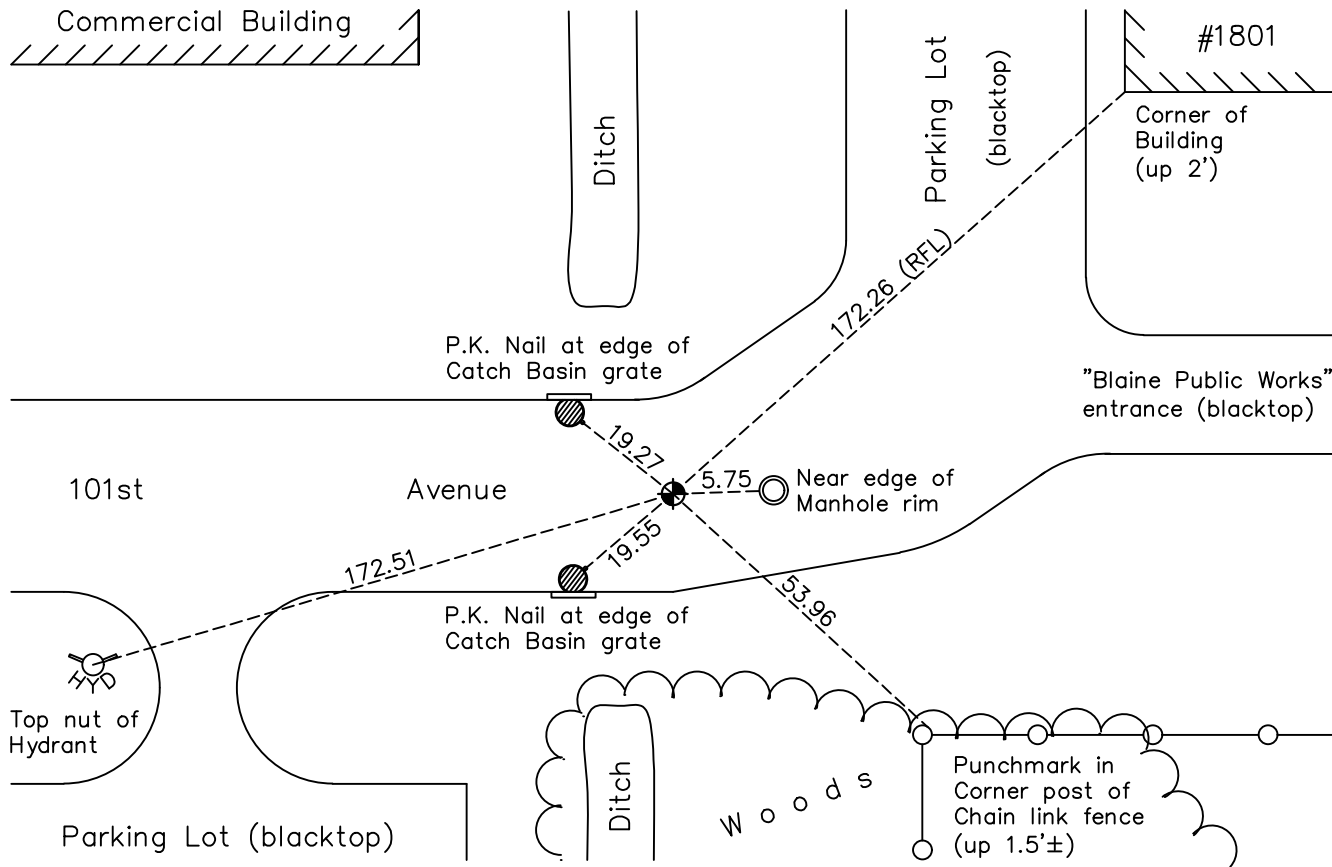
Southeast Corner of Sec. 20 Township 31 Range 23

On the 27th day of June, 1990, the described corner was evidenced by a 2" iron pipe up 1.2'±, from ties by Carley

and to perpetuate the location of said corner, at the exact location thereof, a permanent marker was placed consisting of a cast iron monument

AND on the 6th day of May, 2022, said permanent marker was found flush and the ties were updated

Updated reference ties are as shown below.



Revision Date
 08/12/22

N.A.D. 1983 Coordinates
 (1996 Adjustment)

| County Project Coordinates | |
|----------------------------|-------------|
| Northing | 143097.7388 |
| Easting | 510761.9652 |
| Date | 12/10/98 |

I hereby certify that this United States public land survey monument record is correct and complete to the best of my knowledge and belief.
David Zieglmeier Date 2/28/23
 David Zieglmeier Anoka County Surveyor
 Minnesota License Number 46179

HISTORY OF GOVERNMENT CORNER

Page No. 83

County of Anoka

State of Minnesota

Southeast Corner of Sec. 20 Township 31 Range 23

CORNER HISTORY:

Unknown date - Found iron and established ties to iron by Carley.

September 17, 1964 - Found 2" iron pipe up 1.2'± using Carley ties.

August 14, 1968 - Found 2" iron pipe and updated ties.

August 19, 1977 - Found 2" iron pipe and updated ties.

April 16, 1981 - Reset corner with a cast iron monument using area resurvey and the plat of Blaine Industrial Square. Updated ties.

November 5, 1981 - Found cast iron monument and set construction ties prior to construction.

June 2, 1983 - Set cast iron monument after construction and updated ties.

June 27, 1990 - Found cast iron monument and updated ties.

June 9, 1995 - Found cast iron monument and updated ties.

December 10, 1998 - Found cast iron monument, established NAD 1983 (1996 adj.) Anoka County project coordinates by static GPS methods and updated ties.

June 21, 2006 - Found cast iron monument and updated ties.

June 13, 2014 - Found cast iron monument, verified position by VRS GPS methods and updated ties.

July 2, 2019 - Found cast iron monument, verified position by VRS GPS methods and updated ties.

May 6, 2022 - Found cast iron monument flush, verified position by VRS GPS methods and updated ties.