

CERTIFICATE OF LOCATION OF GOVERNMENT CORNER

County of Anoka

State of Minnesota

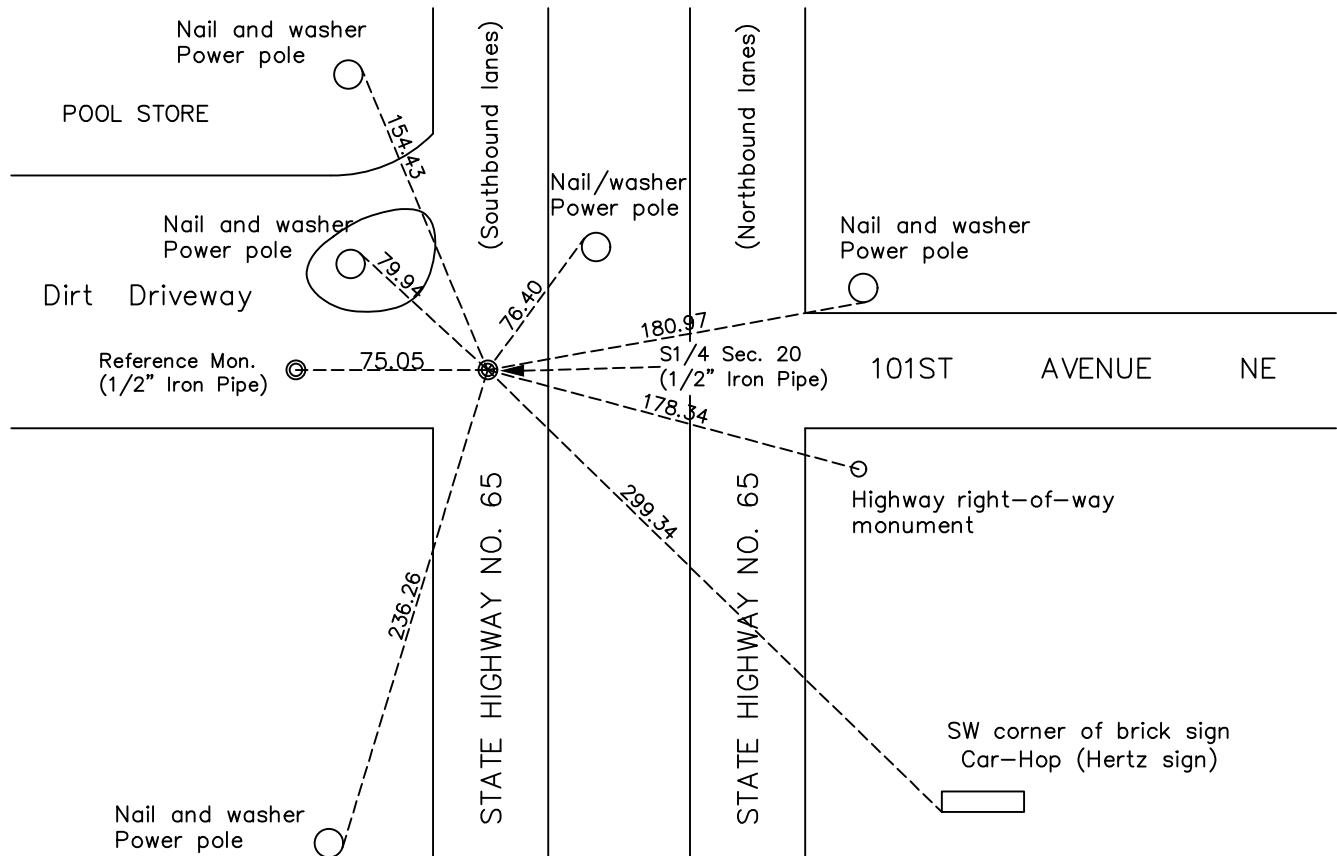
South 1/4 Corner of Sec. 20 Township 31 Range 23

On the 31st day of August, 2006, the described corner was evidenced by a cast iron monument

and to perpetuate the location of said corner, at the exact location thereof, a permanent marker was placed consisting of a 1/2" iron pipe

AND on the 13th day of June, 2023, said permanent marker was found down 0.1' w/cap missing. Reference monument (index #1630) was set 75' westerly and ties established.

Updated reference ties are as shown below.



N.A.D. 1983 Coordinates
(1996 Adjustment)

County Project Coordinates	
Northing	<u>143119.6457</u>
Easting	<u>508070.9582</u>
Date	<u>8/31/2006</u>

Revision Date
8/07/2023

I hereby certify that this United States public land survey monument record is correct and complete to the best of my knowledge and belief.

David Zieglmeier Date 12/7/23

David M. Zieglmeier, Anoka County Surveyor
Minnesota License Number 46179

REFERENCE MONUMENT FOR GOVERNMENT CORNER

Reference to County of Anoka State of Minnesota

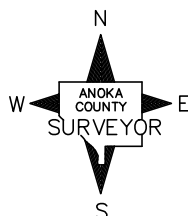
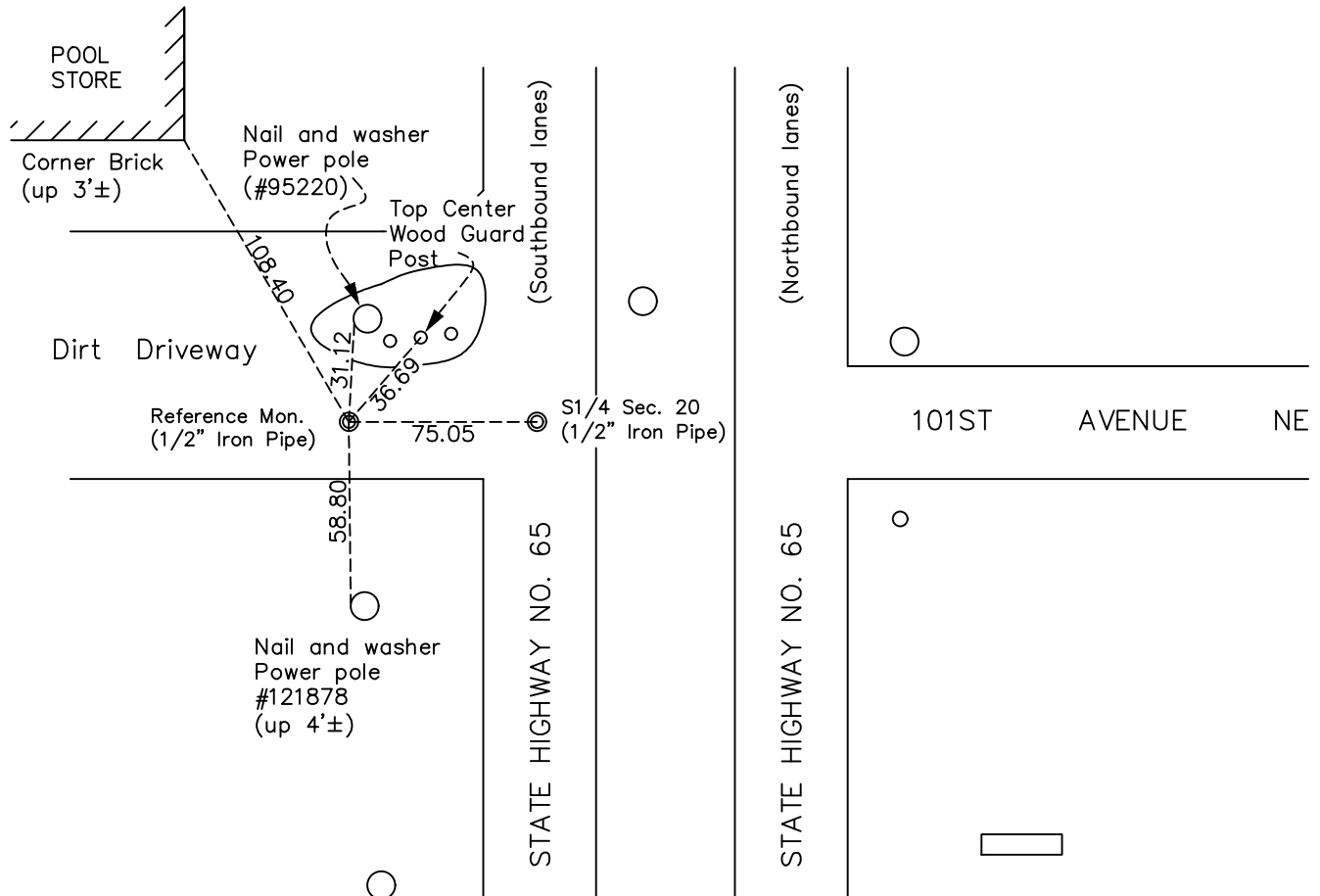
South 1/4 Corner of Sec. 20 Township 31 Range 23

On the 13th day of June, 2023, the described reference monument was evidenced by a computed position 75' westerly along the section line

and to reference the location of said corner, at the exact location thereof, a permanent marker was placed consisting of a 1/2" X 2' long rebar with Aluminum County cap and punch mark

AND on the 13th day of June, 2023, said permanent marker was set down 0.2'± using RTK GPS method and the ties were established to the reference monument

Updated reference ties are as shown below.



Revision Date
8/07/2023

REFERENCE MONUMENT
N.A.D. 1983 (2011 Adj.)

County Project Coordinates	
Northing	143120.5369
Easting	507995.9635
Date	6/13/2023

HISTORY OF GOVERNMENT CORNER

Page No. 84

County of Anoka

State of Minnesota

South 1/4 Corner of Sec. 20 Township 31 Range 23

CORNER HISTORY:

May 27, 1947 - Harvey Cartwright set railroad spike into concrete pavement using highway department ties. Updated ties.

August 6, 1959 - Found P.K. nail and updated ties by Schoell & Madson.

February 5, 1963 - Found P.K. nail using ties by Schoell & Madson. Updated ties.

July 6, 1964 - Found P.K. nail and updated ties.

August 28, 1969 - Found P.K. nail and replaced with a cast iron monument flush. Updated ties.

May 16, 1975 - Found cast iron monument down, raised flush and updated ties.

August 11, 1977 - Found cast iron monument and updated ties.

June 19, 1980 - Found cast iron monument and updated ties.

June 11, 1986 - Found cast iron monument and updated ties.

July 11, 1990 - Found cast iron monument and updated ties.

October 24, 1990 - Found cast iron monument and updated ties.

July 18, 1995 - Found cast iron monument under blacktop road.

August 31, 2006 - Replaced with a 1/2" iron pipe using transit ties. Established NAD 1983 (1996 adj.) Anoka County project coordinates by static GPS methods.

December 3, 2021 - Found 1/2" iron pipe. Verified position by VRS GPS methods.

June 13, 2023 - Found 1/2" iron pipe down 0.1'±. Set **reference monument** to a computed position 75' westerly along the section line using RTK GPS method consisting of a 1/2" x 2' rebar with Anoka County aluminum cap and punch mark set down 0.2'± in dirt drive. Established ties to the **reference monument**.