

CERTIFICATE OF LOCATION OF GOVERNMENT CORNER

County of Anoka

State of Minnesota

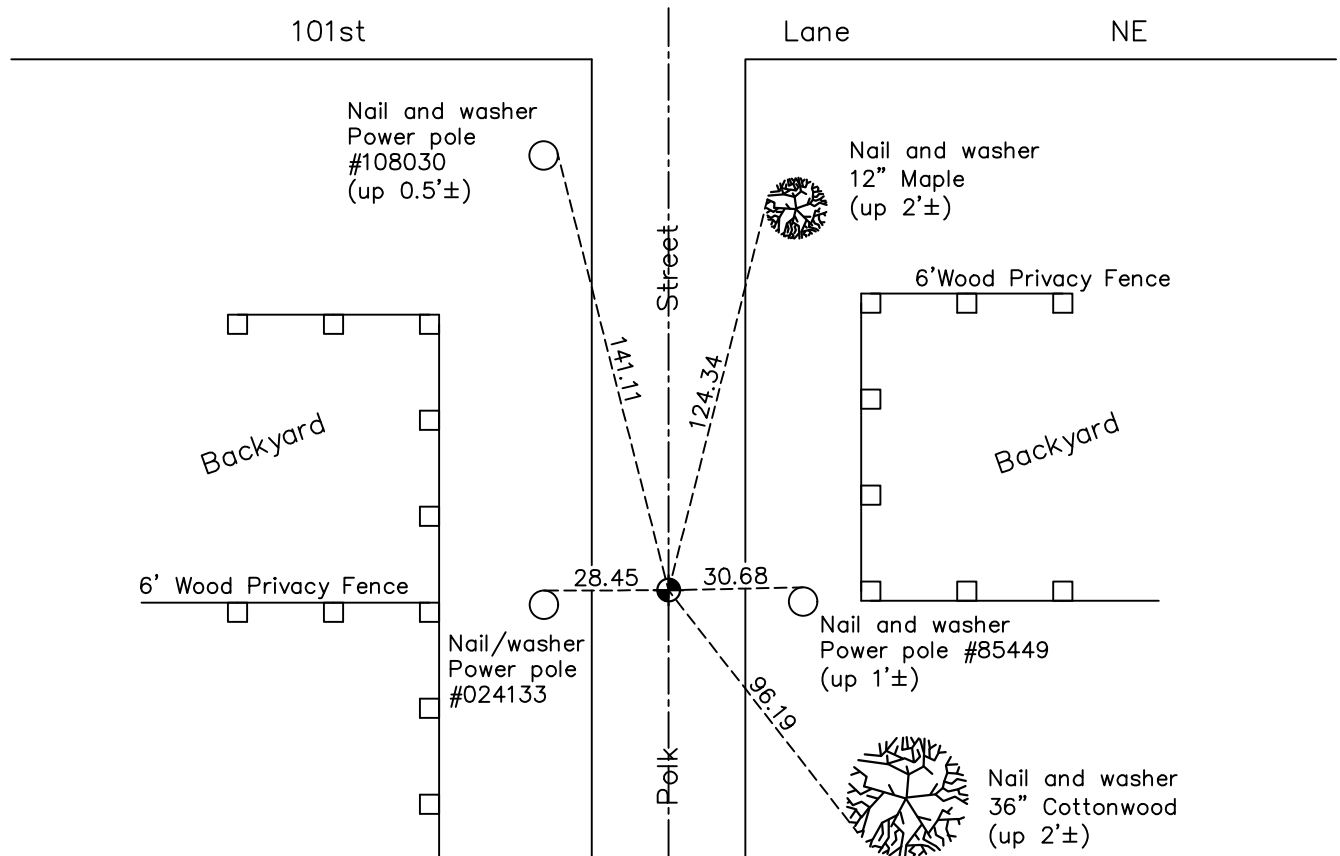
Southwest Corner of Sec. 20 Township 31 Range 23

On the 9th day of March, 1962, the described corner was evidenced by a concrete monument

and to perpetuate the location of said corner, at the exact location thereof, a permanent marker was placed consisting of a cast iron monument

AND on the 3rd day of May, 2022, said permanent marker was found flush on the centerline and the ties were updated

Updated reference ties are as shown below.



Revision Date
10/03/2022

N.A.D. 1983 Coordinates
(1996 Adjustment)

County Project Coordinates	
Northing	<u>143151.4720</u>
Easting	<u>505392.8182</u>
Date	<u>12/10/98</u>

I hereby certify that this United States public land survey monument record is correct and complete to the best of my knowledge and belief.

David Zieglmeier Date 2/28/23

David Zieglmeier Anoka County Surveyor
Minnesota License Number 46179

HISTORY OF GOVERNMENT CORNER

Page No. 85

County of Anoka

State of Minnesota

Southwest Corner of Sec. 20 Township 31 Range 23

CORNER HISTORY:

May 27, 1947 - Harvey Cartwright found old iron monument down 1.2' that checks with platting. Replaced with a concrete monument and established ties to concrete monument.

May 1959 - Found concrete monument and updated ties by Suburban Engineering, Inc.

March 9, 1962 - Found a 1/2" iron pipe flush, a 3/4" iron pipe down 0.7', and a concrete monument down 2'. Set cast iron monument down 0.2' on top of concrete monument and updated ties.

June 11, 1964 - Found cast iron monument and updated ties.

July 29, 1968 - Found cast iron monument and updated ties.

September 23, 1971 - Found cast iron monument and updated ties.

May 15, 1975 - Found cast iron monument and updated ties.

August 19, 1977 - Found cast iron monument and updated ties.

June 5, 1980 - Found cast iron monument and updated ties.

April 24, 1987 - Reset cast iron monument after construction and updated ties.

June 21, 1990 - Found cast iron monument and updated ties.

June 7, 1995 - Found cast iron monument and updated ties.

July 18, 1995 - Found cast iron monument and updated ties.

December 10, 1998 - Found cast iron monument, established NAD 1983 (1996 adj.) Anoka County project coordinates by static GPS methods and updated ties.

June 21, 2006 - Found cast iron monument and updated ties.

June 11, 2010 - Found cast iron monument, set construction ties and updated corner ties prior to road construction. Removed monument.

September 14, 2010 - Set temporary P.K. nail using construction ties after road construction. Checked position by VRS GPS methods and distances to corner ties.

October 13, 2010 - Set new temporary P.K. nail and checked distances to corner ties.

October 21, 2010 - Replaced P.K. nail with a cast iron monument flush after road construction and updated ties.

June 16, 2014 - Found cast iron monument, verified position by VRS GPS methods and updated ties.

June 17, 2019 - Found cast iron monument, verified position by VRS GPS methods and updated ties.

May 3, 2022 - Found cast iron monument, verified position by VRS GPS methods and updated ties