

CERTIFICATE OF LOCATION OF GOVERNMENT CORNER

County of Anoka

State of Minnesota

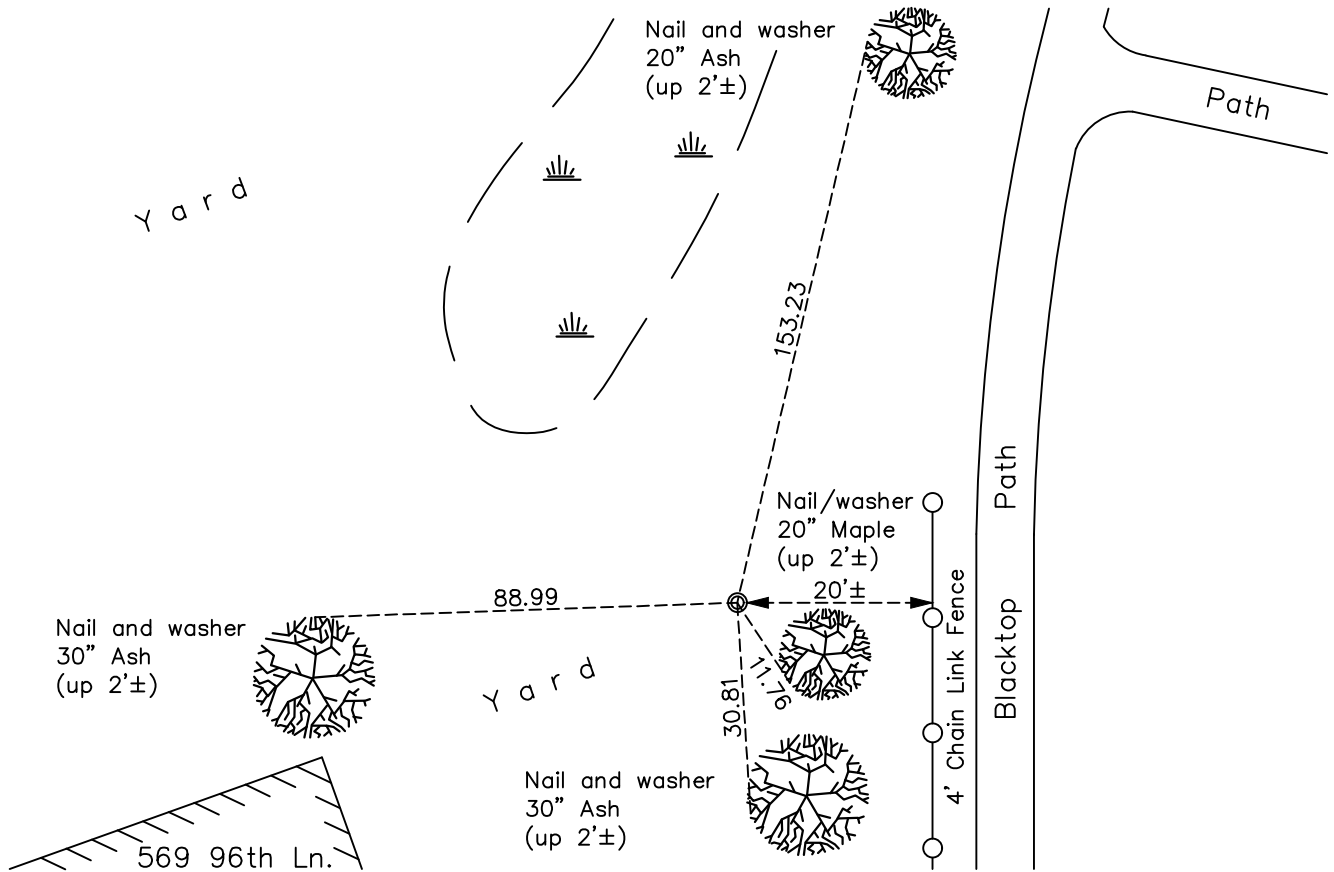
Center Corner of Sec. 30 Township 31 Range 23

On the 9th day of August, 1968, the described corner was evidenced by a 3/4" pinched iron pipe

and to perpetuate the location of said corner, at the exact location thereof, a permanent marker was placed consisting of a cast iron monument

AND on the 24th day of June, 2022, said permanent marker was found 1/2" capped iron pipe (RLS# 9064). Verified position by VRS GPS methods and updated ties.

Updated reference ties are as shown below.



Revision Date
 7/1/2022

N.A.D. 1983 Coordinates
 (1996 Adjustment)

County Project Coordinates	
Northing	140490.0258
Easting	502756.5437
Date	4/15/2021

I hereby certify that this United States public land survey monument record is correct and complete to the best of my knowledge and belief.

David Zieglmeier Date 2/28/23

David M. Zieglmeier, Anoka County Surveyor
 Minnesota License Number 46179

HISTORY OF GOVERNMENT CORNER

Page No. 87

County of Anoka

State of Minnesota

Center Corner of Sec. 30 Township 31 Range 23

CORNER HISTORY:

1958 - Minnesota highway department found a 1" iron pipe down 3"±. Updated ties.

November 8, 1961 - Found 3/4" pinched iron pipe flush using old Minnesota highway department ties. Updated ties.

June 15, 1964 - Found 3/4" iron pipe flush and updated ties.

August 9, 1968 - Replaced iron pipe with a cast iron monument flush. Updated ties.

May 28, 1975 - Found cast iron monument and updated ties.

April 22, 1977 - Reset 3/4" iron pipe and updated ties.

August 19, 1977 - Found 3/4" iron pipe and updated ties.

October 24, 1977 - Found cast iron monument in place with all previous ties gone. Updated ties.

June 2, 1986 - Almost all trees gone, couldn't locate monument by fences.

April 15, 2021 - Found 1/2" capped iron pipe RLS# 9064. All ties gone. Established NAD 1983 (1996 adj.) Anoka County project coordinates by static GPS methods.

June 24, 2022 - Found 1/2" capped iron pipe RLS# 9064. Verified position by VRS GPS methods. Updated ties.