

CERTIFICATE OF LOCATION OF GOVERNMENT CORNER

County of Anoka

State of Minnesota

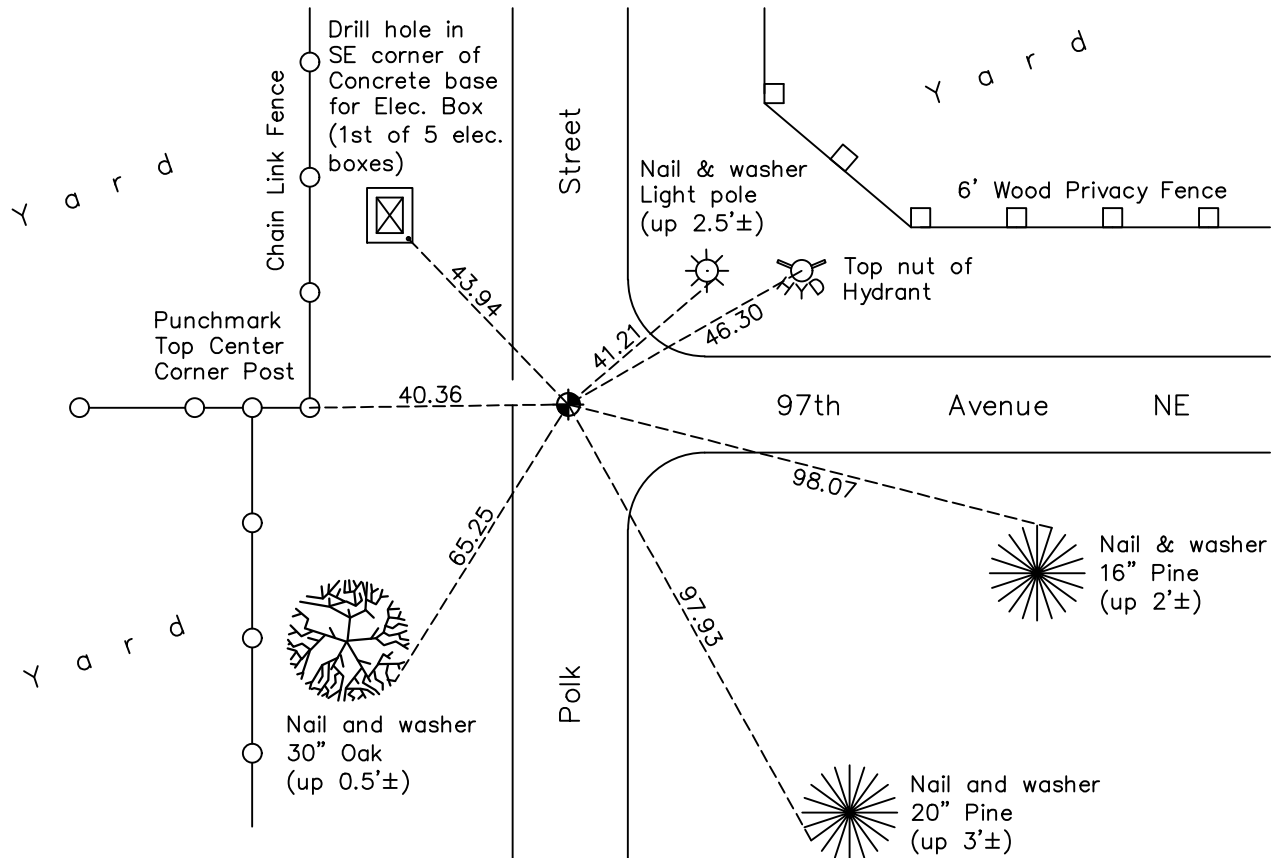
West 1/4 Corner of Sec. 29 Township 31 Range 23

On the 8th day of November, 1961, the described corner was evidenced by a concrete monument

and to perpetuate the location of said corner, at the exact location thereof, a permanent marker was placed consisting of a cast iron monument

AND on the 6th day of May, 2022, said permanent marker was found flush and the ties were updated

Updated reference ties are as shown below.



N.A.D. 1983 Coordinates
(1996 Adjustment)

County Project Coordinates	
Northing	140500.9615
Easting	505376.2452
Date	12/10/98

Revision Date
10/03/2022

I hereby certify that this United States public land survey monument record is correct and complete to the best of my knowledge and belief.
David Zieglmeier Date 2/28/23
 David Zieglmeier Anoka County Surveyor
 Minnesota License Number 46179

HISTORY OF GOVERNMENT CORNER

Page No. 88

County of Anoka

State of Minnesota

West 1/4 Corner of Sec. 29 Township 31 Range 23

CORNER HISTORY:

July 21, 1948 - Harvey Cartwright found a gun barrel as per survey of 1902 and replaced it with a concrete monument. Established ties to concrete monument.

November 8, 1961 - Concrete monument missing. Found 3/4" pinched iron pipe down 2" and updated ties.

June 12, 1964 - Found 3/4" iron pipe and updated ties.

July 29, 1968 - Found 3/4" iron pipe and updated ties.

September 6, 1968 - Found 4" x 4" concrete monument down 0.8± and set a cast iron monument flush on top of concrete monument. Updated ties.

September 23, 1971 - Found cast iron monument and updated ties.

May 16, 1975 - Found cast iron monument and updated ties.

September 18, 1977 - Found cast iron monument and updated ties.

September 4, 1979 - Found cast iron monument and set construction ties prior to road construction.

June 13, 1980 - Found P.K. nail in road and all old corner ties gone. Updated ties to P.K. nail.

April 7, 1981 - Reset P.K. nail using 1979 construction ties. Updated ties.

July 7, 1981 - Adjusted position of P.K. nail. Updated ties.

July 8, 1981 - Found P.K. nail and replaced with a cast iron monument. Updated ties.

April 24, 1987 - Found cast iron monument and updated ties.

June 20, 1990 - Found cast iron monument and updated ties.

June 9, 1995 - Found cast iron monument and updated ties.

December 10, 1998 - Found cast iron monument, established NAD 1983 (1996 adj.) Anoka County project coordinates by static GPS methods and updated ties.

June 21, 2006 - Found cast iron monument and updated ties.

June 11, 2010 - Found cast iron monument and updated ties prior to road construction. Removed monument.

September 14, 2010 - Set P.K. nail after construction. Checked corner ties and position by VRS GPS methods.

October 21, 2010 - Found P.K. nail and replaced with a cast iron monument. Updated ties.

June 16, 2014 - Found cast iron monument, verified position by VRS GPS methods and updated ties.

June 19, 2019 - Found cast iron monument, verified position by VRS GPS methods and updated ties.

HISTORY OF GOVERNMENT CORNER

County of Anoka

State of Minnesota

West 1/4 Corner of Sec. 29 Township 31 Range 23

CORNER HISTORY:

May 6, 2022 - Found cast iron monument, verified position by VRS GPS method and updated ties