

CERTIFICATE OF LOCATION OF GOVERNMENT CORNER

County of Anoka

State of Minnesota

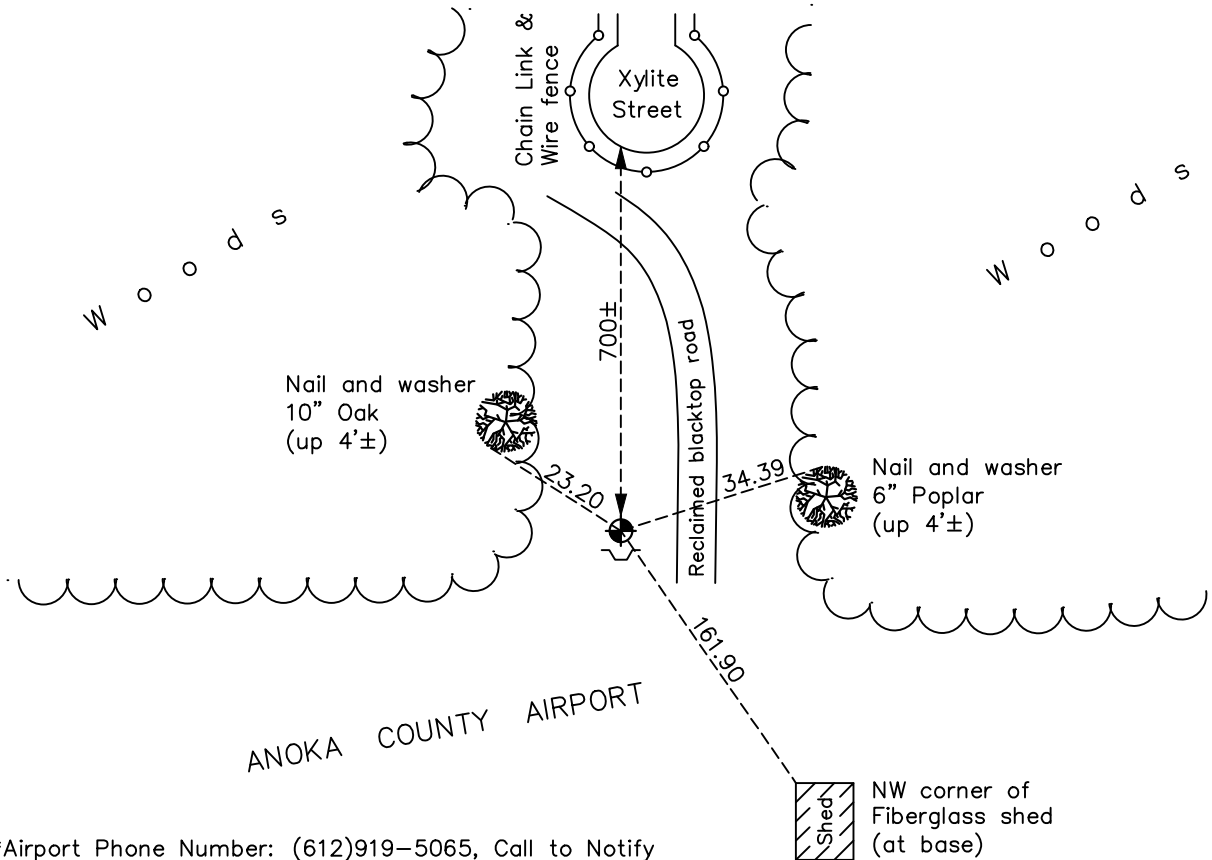
West 1/4 Corner of Sec. 27 Township 31 Range 23

On the 8th day of November, 1961, the described corner was evidenced by a 1/2" iron pipe

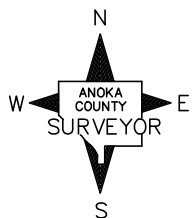
and to perpetuate the location of said corner, at the exact location thereof, a permanent marker was placed consisting of a cast iron monument with a sign and post on the south side

AND on the 11th day of May, 2022, said permanent marker was found down 0.3'± and the ties were updated

Updated reference ties are as shown below.



*Airport Phone Number: (612)919-5065, Call to Notify



Revision Date
10/04/2022

N.A.D. 1983 Coordinates
(1996 Adjustment)

County Project Coordinates	
Northing	<u>140475.8871</u>
Easting	<u>516026.3436</u>
Date	<u>8/26/99</u>

I hereby certify that this United States public land survey monument record is correct and complete to the best of my knowledge and belief.

David Zieglmeier Date 2/28/23

David Zieglmeier Anoka County Surveyor
Minnesota License Number 46179

HISTORY OF GOVERNMENT CORNER

Page No. 91

County of Anoka

State of Minnesota

West 1/4 Corner of Sec. 27 Township 31 Range 23

CORNER HISTORY:

Unknown date - Found iron pipe and established ties to iron pipe by C. O. Georgi.

November 8, 1961 - Found 1/2" iron pipe down 0.5' using C. O. Georgi ties. Updated ties.

May 17, 1962 - Found 1/2" pinched iron pipe down 0.2' and added additional ties prior to road construction. Pounded iron down 1' below present position.

June 10, 1964 - Found 1/2" iron pipe and updated ties.

August 6, 1968 - Found iron pipe and replaced with a cast iron monument flush. Updated ties.

September 23, 1971 - Found cast iron monument and updated ties.

1975 - Found cast iron monument down, raised flush and updated ties.

August 19, 1977 - Found cast iron monument and updated ties.

June 9, 1980 - Found cast iron monument and updated ties.

July 17, 1990 - Found cast iron monument and updated ties.

August 5, 1991 - Found cast iron monument and set construction ties prior to road construction. Removed monument.

October 3, 1991 - Set cast iron monument after construction using corner ties and area resurvey. Updated ties.

August 2, 1995 - Found cast iron monument and updated ties.

August 26, 1999 - Found cast iron monument, established NAD 1983 (1996 adj.) Anoka County project coordinates by static GPS methods and updated ties.

June 21, 2006 - Found cast iron monument and updated ties.

July 22, 2014 - Found cast iron monument down 0.3'±. Verified position by VRS GPS methods. Updated ties.

June 25, 2019 - Found cast iron monument down 0.3'±. Verified position by VRS GPS methods. Updated ties.

May 11, 2022 - Found cast iron monument down 0.3'±. Verified position by VRS GPS methods. Updated ties.