

CERTIFICATE OF LOCATION OF GOVERNMENT CORNER

County of Anoka

State of Minnesota

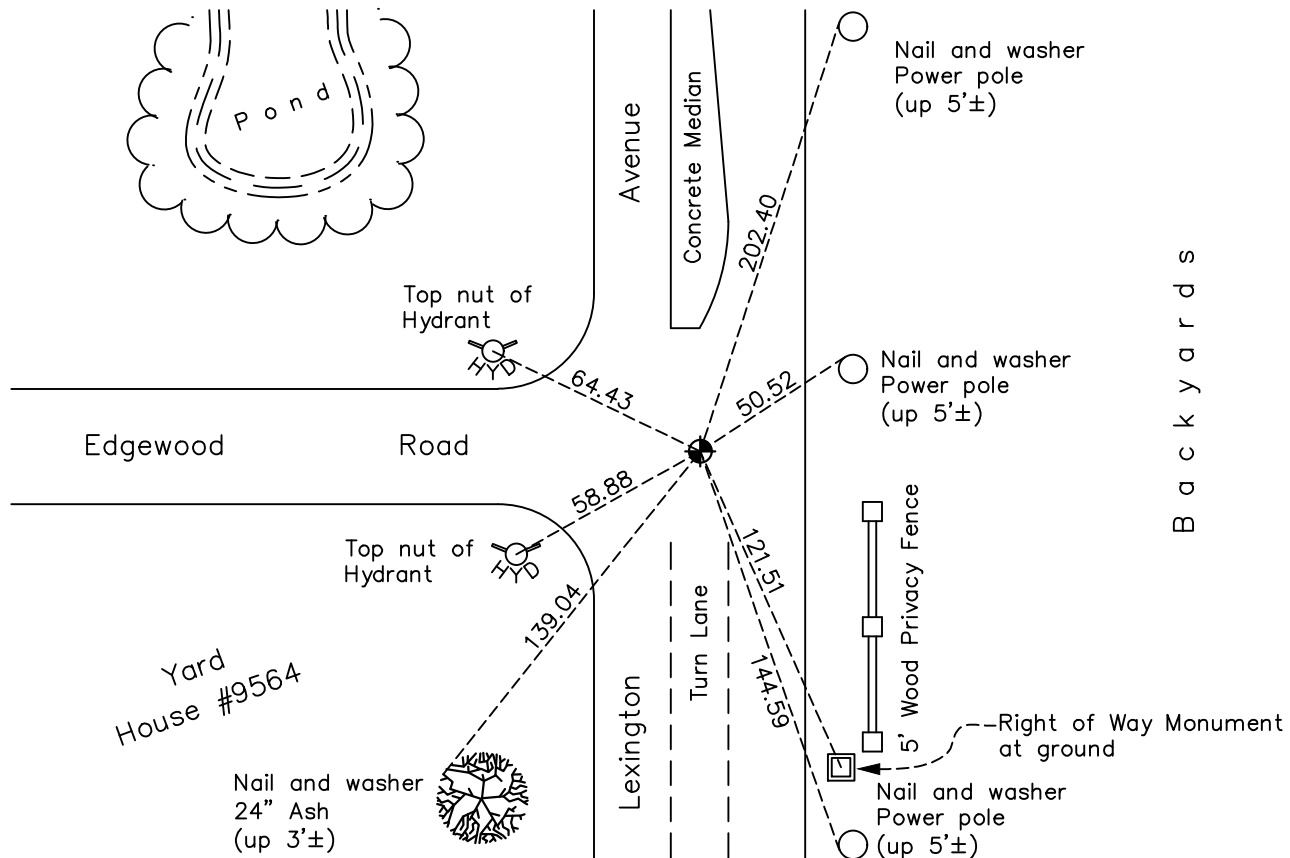
West 1/4 Corner of Sec. 25 Township 31 Range 23

On the 28th day of September, 1971, the described corner was evidenced by a 1" iron pipe set above a 4" X 4" concrete monument

and to perpetuate the location of said corner, at the exact location thereof, a permanent marker was placed consisting of a cast iron monument

AND on the 1st day of November, 2023, said permanent marker was reset 8" CIM after Road Const, set in concrete, using static GPS method. Updated ties and verified position w/ RTK GPS.

Updated reference ties are as shown below.



Revision Date
 11/06/2023

N.A.D. 1983 Coordinates
 (1996 Adjustment)

| County Project Coordinates | |
|----------------------------|-------------|
| Northing | 140384.6756 |
| Easting | 526609.8560 |
| Date | 10/19/98 |

I hereby certify that this United States public land survey monument record is correct and complete to the best of my knowledge and belief.

David Zieglmeier Date 12/7/23

David Zieglmeier Anoka County Surveyor
 Minnesota License Number 46179

HISTORY OF GOVERNMENT CORNER

Page No. 93

County of Anoka

State of Minnesota

West 1/4 Corner of Sec. 25 Township 31 Range 23

CORNER HISTORY:

September 6, 1943 - Harvey Cartwright found a 4' x 1" iron flush with road and replaced with a concrete monument down 2". Established ties to monument.

November 7, 1955 - Found concrete monument and updated ties by Charles O. Georgi.

December 1956 - Found iron flush and updated ties.

June 17, 1959 - Found concrete monument and updated ties by Northern Natural Gas Co.

November 7, 1961 - Found 1" iron pipe in blacktop road down 0.3' and updated ties.

June 10, 1964 - Found 1" iron pipe and updated ties.

June 28, 1966 - Found 1" iron pipe and updated ties prior to road construction.

August 6, 1968 - Found 1" iron pipe and updated ties.

September 28, 1971 - Set cast iron monument flush on top of 4" x 4" concrete monument after road construction. Updated ties.

May 22, 1975 - Found cast iron monument and updated ties.

September 26, 1975 - Found cast iron monument down and raised flush.

6/3/80, 7/19/90, 6/26/95 - Found cast iron monument flush and updated ties.

April 16, 1997 - Found cast iron monument and updated ties prior to road construction.

October 19, 1998 - Found cast iron monument, established NAD 1983 (1996 adj.) Anoka County project coordinates by static GPS methods and updated ties.

September 6, 2001 - Found cast iron monument and set construction ties prior to road construction. Removed monument.

6/12/06, 6/26/14 - Found cast iron monument and updated ties.

6/28/19, 5/23/22 - Found cast iron monument, verified position by VRS GPS methods and updated ties.

April 17, 2023 - Found cast iron monument, verified position by RTK GPS methods and updated ties. Removed for road construction.

November 1, 2023 - Reset 8" Cast Iron Monument after Road Construction, set in Concrete, using static GPS method. Updated ties after setting and verified position with RTK GPS method.