

CERTIFICATE OF LOCATION OF GOVERNMENT CORNER

County of Anoka

State of Minnesota

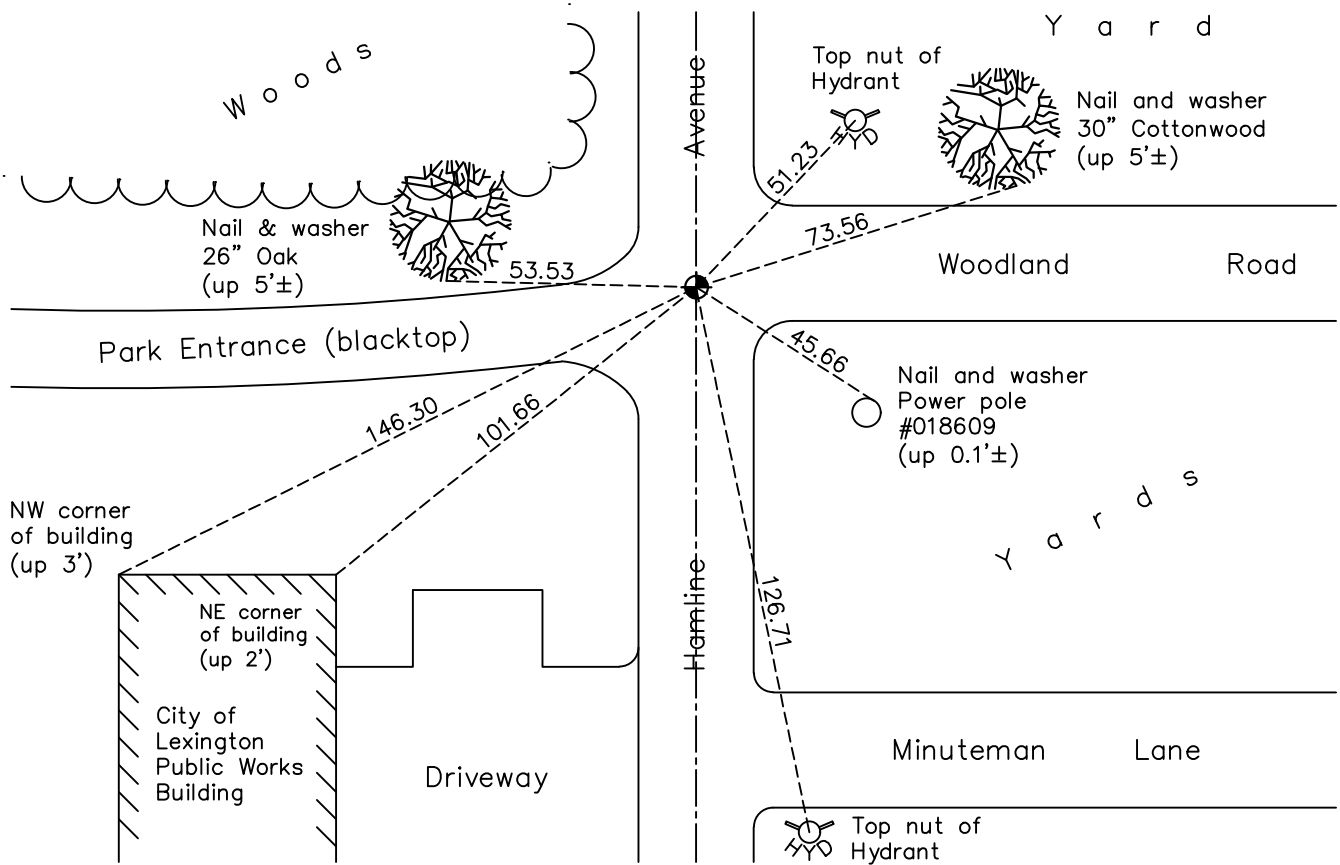
South 1/4 Corner of Sec. 26 Township 31 Range 23

On the 6th day of September, 1967, the described corner was evidenced by a concrete monument

and to perpetuate the location of said corner, at the exact location thereof, a permanent marker was placed consisting of a cast iron monument

AND on the 13th day of May, 2022, said permanent marker was found flush and the ties were updated.

Updated reference ties are as shown below.



N.A.D. 1983 Coordinates
(1996 Adjustment)

County Project Coordinates	
Northing	<u>137770.6123</u>
Easting	<u>523924.8474</u>
Date	<u>10/28/98</u>

Revision Date
3/27/20

I hereby certify that this United States public land survey monument record is correct and complete to the best of my knowledge and belief.
David Zieglmeier Date 2/28/23
 David Zieglmeier Anoka County Surveyor
 Minnesota License Number 46179

HISTORY OF GOVERNMENT CORNER

Page No. 98

County of Anoka

State of Minnesota

South 1/4 Corner of Sec. 26 Township 31 Range 23

CORNER HISTORY:

July 29, 1947 - Harvey Cartwright Found an iron placed by Wolfgram in place of old rotted hub on improved line to the South. Replaced iron with a concrete monument and established ties to concrete monument.

November 7, 1955 - Found concrete monument and updated ties by Charles O. Georgi.

December 1956 - Found concrete monument down 2' and updated ties by County Highway Department.

November 12, 1963 - Set 3/4" iron pipe down 0.1' using Lexington Park platting and updated ties.

June 11, 1964 - Found 3/4" iron pipe and updated ties.

July 17, 1967 - Set 3/4" iron pipe flush and updated ties.

September 6, 1967 - Found concrete monument down 1.42'±. Set cast iron monument flush on top of concrete monument and updated ties.

July 23, 1968 - Found cast iron monument and updated ties.

September 28, 1971 - Found cast iron monument and updated ties.

May 21, 1975 - Found cast iron monument and updated ties.

August 17, 1977 - Found cast iron monument and updated ties.

June 9, 1980 - Found cast iron monument and updated ties.

May 14, 1984 - Found cast iron monument and removed for construction.

June 22, 1990 - Found 1/2" iron pipe and updated ties.

April 11, 1994 - Found cast iron monument and updated ties.

June 6, 1995 - Found cast iron monument and updated ties.

October 28, 1998 - Established NAD 1983(1996 adj.) Anoka County project coordinates by static GPS methods.

November 6, 1998 - Found cast iron monument and updated ties.

June 15, 2006 - Found cast iron monument and updated ties.

August 20, 2012 - Found cast iron monument, set construction ties, verified position by VRS GPS methods and updated corner ties prior to road construction. Removed monument.

November 13, 2012 - Set cast iron monument after construction using static GPS methods. Verified position by VRS GPS methods and updated ties.

June 25, 2014 - Found cast iron monument and updated ties.

HISTORY OF GOVERNMENT CORNER

County of Anoka

State of Minnesota

South 1/4 Corner of Sec. 26 Township 31 Range 23

CORNER HISTORY:

June 21, 2019 - Found cast iron monument, verified position by VRS GPS method and updated ties.

May 13, 2022 - Found cast iron monument, verified position by VRS GPS method and updated ties.