

CERTIFICATE OF LOCATION OF GOVERNMENT CORNER

County of Anoka

State of Minnesota

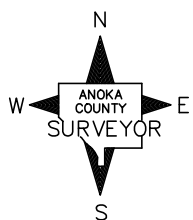
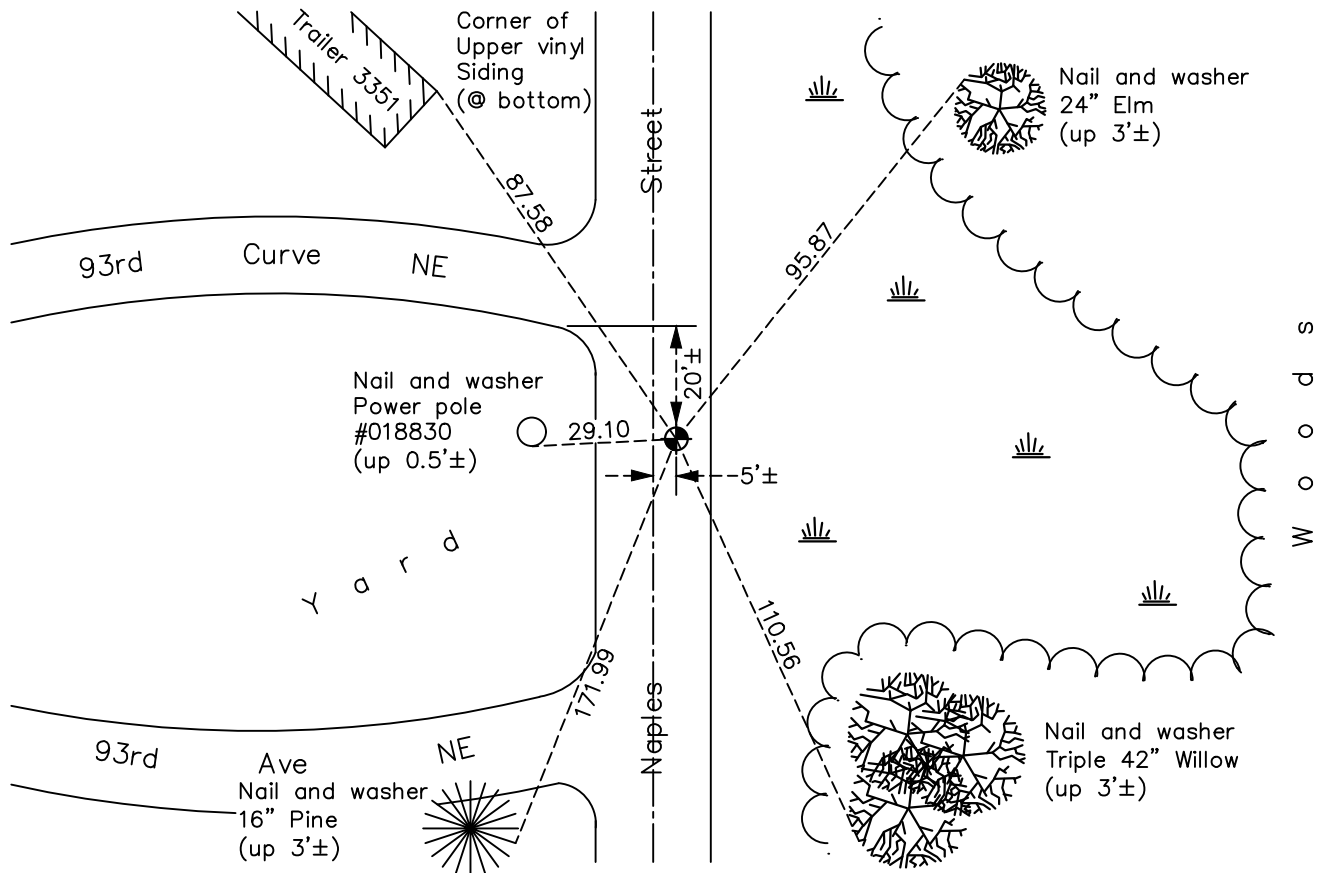
Northwest Corner of Sec. 35 Township 31 Range 23

On the 2nd day of June, 1975, the described corner was evidenced by an iron pipe

and to perpetuate the location of said corner, at the exact location thereof, a permanent marker was placed consisting of a cast iron monument

AND on the 10th day of May, 2022, said permanent marker was found flush and the ties were updated

Updated reference ties are as shown below.



N.A.D. 1983 Coordinates
(1996 Adjustment)

County Project Coordinates	
Northing	137785.5116
Easting	521269.6742
Date	10/28/98

Revision Date
3/27/20

I hereby certify that this United States public land survey monument record is correct and complete to the best of my knowledge and belief.

David Zieglmeier Date 2/28/23

David Zieglmeier Anoka County Surveyor
Minnesota License Number 46179

HISTORY OF GOVERNMENT CORNER

Page No. 99

County of Anoka

State of Minnesota

Northwest Corner of Sec. 35 Township 31 Range 23

CORNER HISTORY:

Unknown date - Milner W. Carley found monument and updated ties.

Unknown date - M.H.D. found monument and updated ties

October 1960 - Suburban Engineering found a iron pipe flush and updated ties.

October 23, 1961 - Found 1/2" iron pipe flush and updated ties.

June 10, 1964 - Found 1/2" iron pipe and updated ties.

July 19, 1966 - Found 1/2" iron pipe down 0.3' and updated ties prior to road construction.

September 29, 1971 - Found 1/2" iron pipe and updated ties.

June 2, 1975 - Found 1/2" iron pipe and replaced with a cast iron monument. Updated ties.

August 17, 1977 - Found cast iron monument and updated ties.

June 9, 1980 - Found cast iron monument and updated ties.

July 6, 1983 - Found cast iron monument and updated ties.

June 9, 1986 - Found cast iron monument and updated ties.

June 21, 1990 - Found cast iron monument and updated ties.

June 27, 1995 - Found cast iron monument and updated ties.

October 28, 1998 - Found cast iron monument, established NAD 1983 (1996 adj.) Anoka County project coordinates by static GPS methods and updated ties.

June 12, 2006 - Found cast iron monument and updated ties.

May 12, 2011 - Found cast iron monument and updated ties prior to road construction. Removed monument.

March 28, 2012 - Set cast iron monument after road construction using static GPS methods. Updated ties.

June 24, 2014 - Found cast iron monument and updated ties.

June 21, 2019 - Found cast iron monument, verified position by VRS GPS methods and updated ties.

May 10, 2022 - Found cast iron monument, verified position by VRS GPS methods and updated ties.