

CERTIFICATE OF LOCATION OF GOVERNMENT CORNER

County of Anoka

State of Minnesota

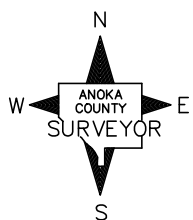
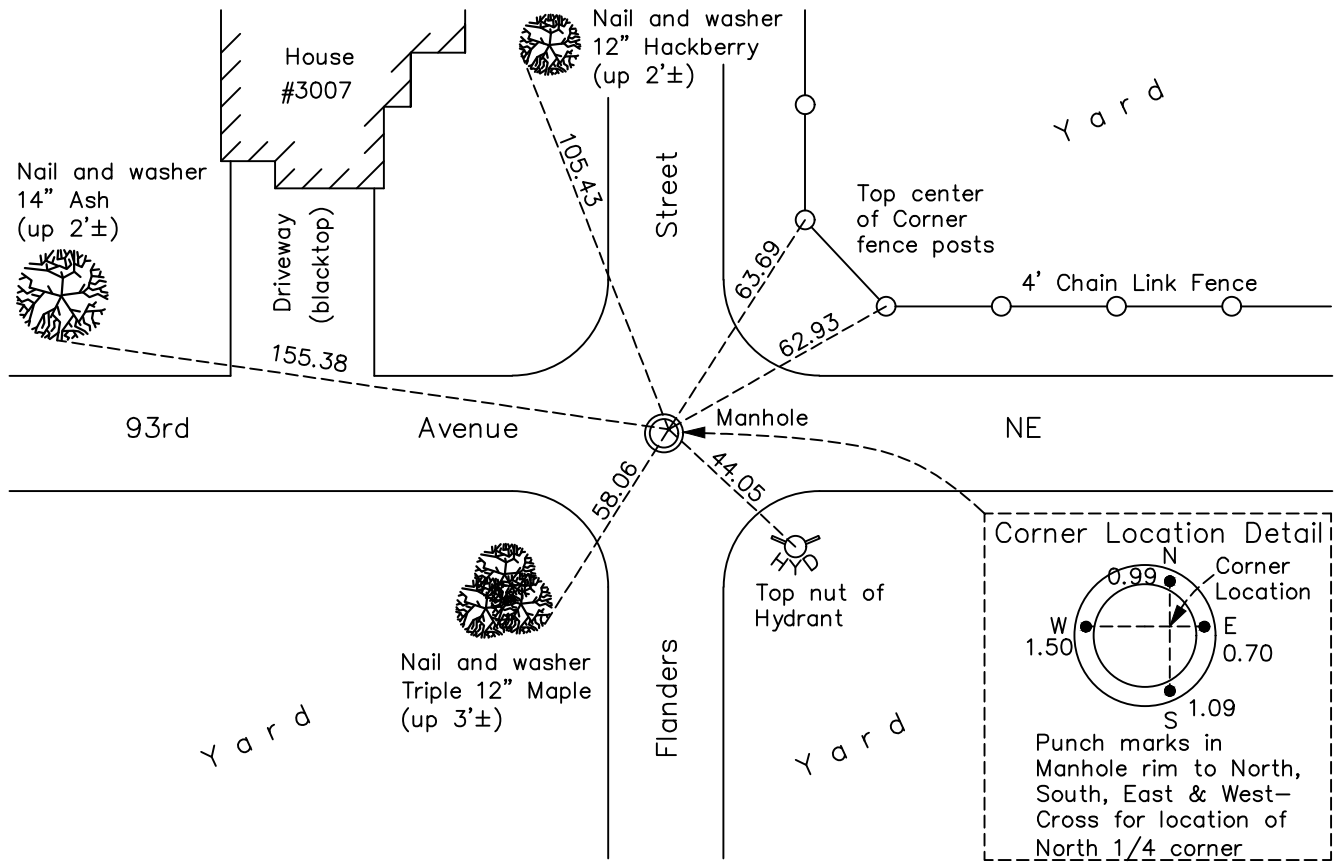
North $\frac{1}{4}$ Corner of Sec. 34 Township 31 Range 23

On the 23rd day of October, 1961, the described corner was evidenced by an iron pipe

and to perpetuate the location of said corner, at the exact location thereof, a permanent marker was placed consisting of a location on a manhole cover

AND on the 11th day of May, 2022, said permanent marker was found on manhole cover and the ties were updated

Updated reference ties are as shown below.



N.A.D. 1983 Coordinates
(1996 Adjustment)

County Project Coordinates	
Northing	<u>137806.8425</u>
Easting	<u>518630.3319</u>
Date	<u>2/03/00</u>

Revision Date
10/04/2022

I hereby certify that this United States public land survey monument record is correct and complete to the best of my knowledge and belief.

David Zieglmeier Date 2/28/23

David Zieglmeier Anoka County Surveyor
Minnesota License Number 46179

HISTORY OF GOVERNMENT CORNER

Page No. 100

County of Anoka

State of Minnesota

North 1/4 Corner of Sec. 34 Township 31 Range 23

CORNER HISTORY:

Unknown date - Suburban Engineering found a iron pipe and updated ties.

October 23, 1961 - Found iron pipe and established ties to monument.

June 11, 1964 - Found iron pipe and updated ties.

July 25, 1968 - Found iron pipe and replaced with a cast iron monument down 0.5'±. Updated ties.

September 28, 1971 - Found cast iron monument and updated ties.

May 20, 1975 - Found cast iron monument and updated ties.

August 17, 1977 - Found cast iron monument and updated ties.

July 28, 1980 - Found cast iron monument and updated ties.

June 9, 1986 - Found cast iron monument and updated ties.

June 22, 1990 - Found cast iron monument and updated ties.

August 28, 1995 - Found cast iron monument missing. Corner location falls on manhole cover. Set new location and updated ties.

August 31, 1998 - Reset corner location on sanitary manhole. Placed punchmarks on manhole rim to the North, South, East and West. Intersection of punchmarks represents corner location. Updated ties.

February 3, 2000 - Found intersection of punchmarks on manhole cover, established NAD 1983 (1996 adj.) Anoka County project coordinates by static GPS methods and updated ties.

June 15, 2006 - Found intersection of punchmarks on manhole cover and updated ties.

June 20, 2014 - Found intersection of punchmarks on manhole cover, verified position by VRS GPS methods and updated ties.

June 21, 2019 - Found intersection of punchmarks on manhole cover, verified position by VRS GPS methods and updated ties.

May 11, 2022 - Re-drilled punchmarks on manhole cover, verified position by VRS GPS methods and updated ties.