

CERTIFICATE OF LOCATION OF GOVERNMENT CORNER

County of Anoka

State of Minnesota

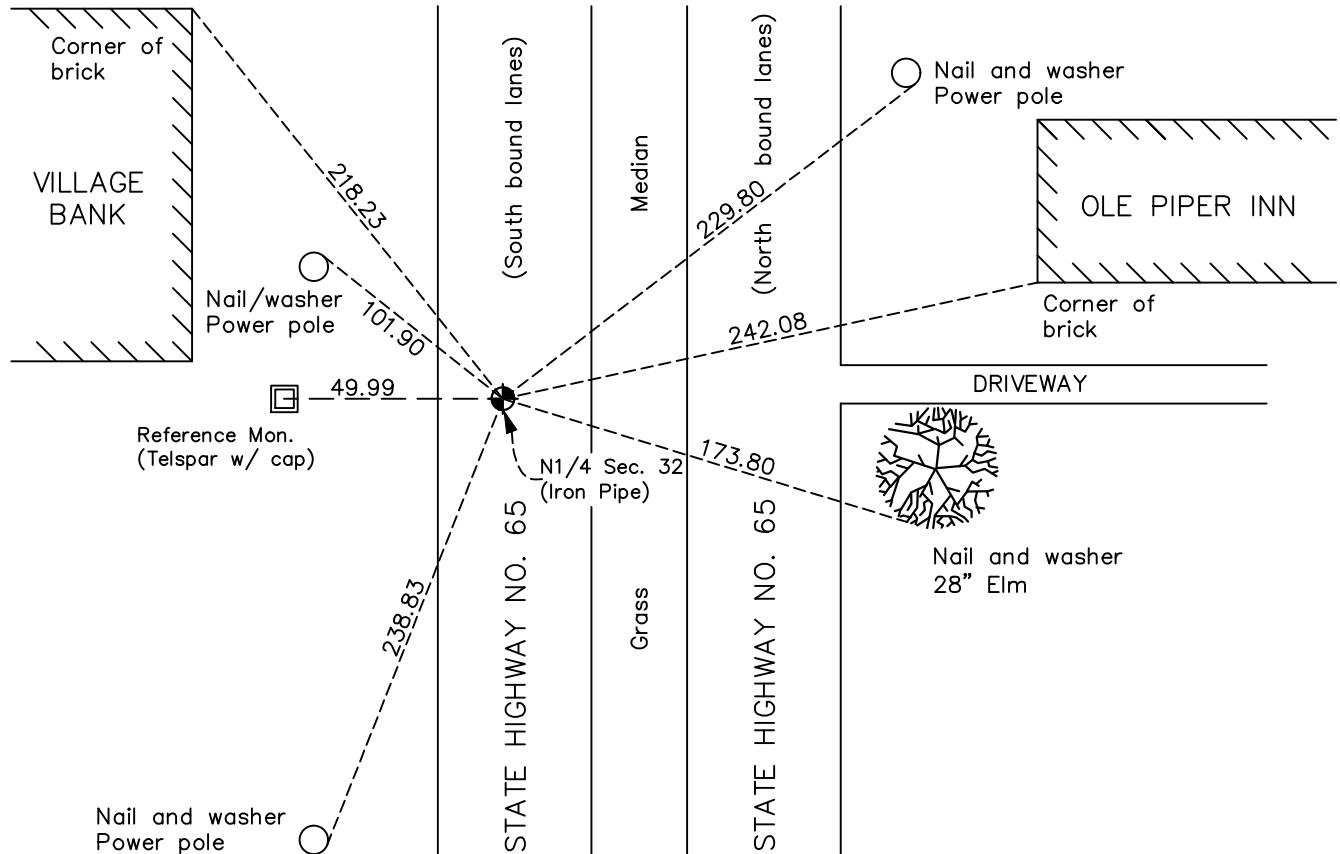
North $\frac{1}{4}$ Corner of Sec. 32 Township 31 Range 23

On the 28th day of August, 1969, the described corner was evidenced by a cast iron monument

and to perpetuate the location of said corner, at the exact location thereof, a permanent marker was placed consisting of a 1/2" iron pipe w/cap set on 9/6/2006 after cast iron monument found missing

AND on the 14th day of June, 2023, said permanent marker was found down 0.1'± w/ damaged cap. Reference monument (index #1631) was set 50' westerly and the ties established.

Updated reference ties are as shown below.



Revision Date
8/07/2023

N.A.D. 1983 Coordinates
(1996 Adjustment)

County Project Coordinates	
Northing	<u>137852.2318</u>
Easting	<u>508041.7970</u>
Date	<u>9/6/2006</u>

I hereby certify that this United States public land survey monument record is correct and complete to the best of my knowledge and belief.

David Zieglmeier Date 12/7/23

David M. Zieglmeier, Anoka County Surveyor
Minnesota License Number 46179

REFERENCE MONUMENT FOR GOVERNMENT CORNER

Reference to County of Anoka State of Minnesota

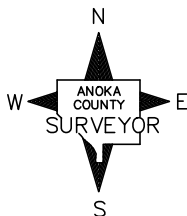
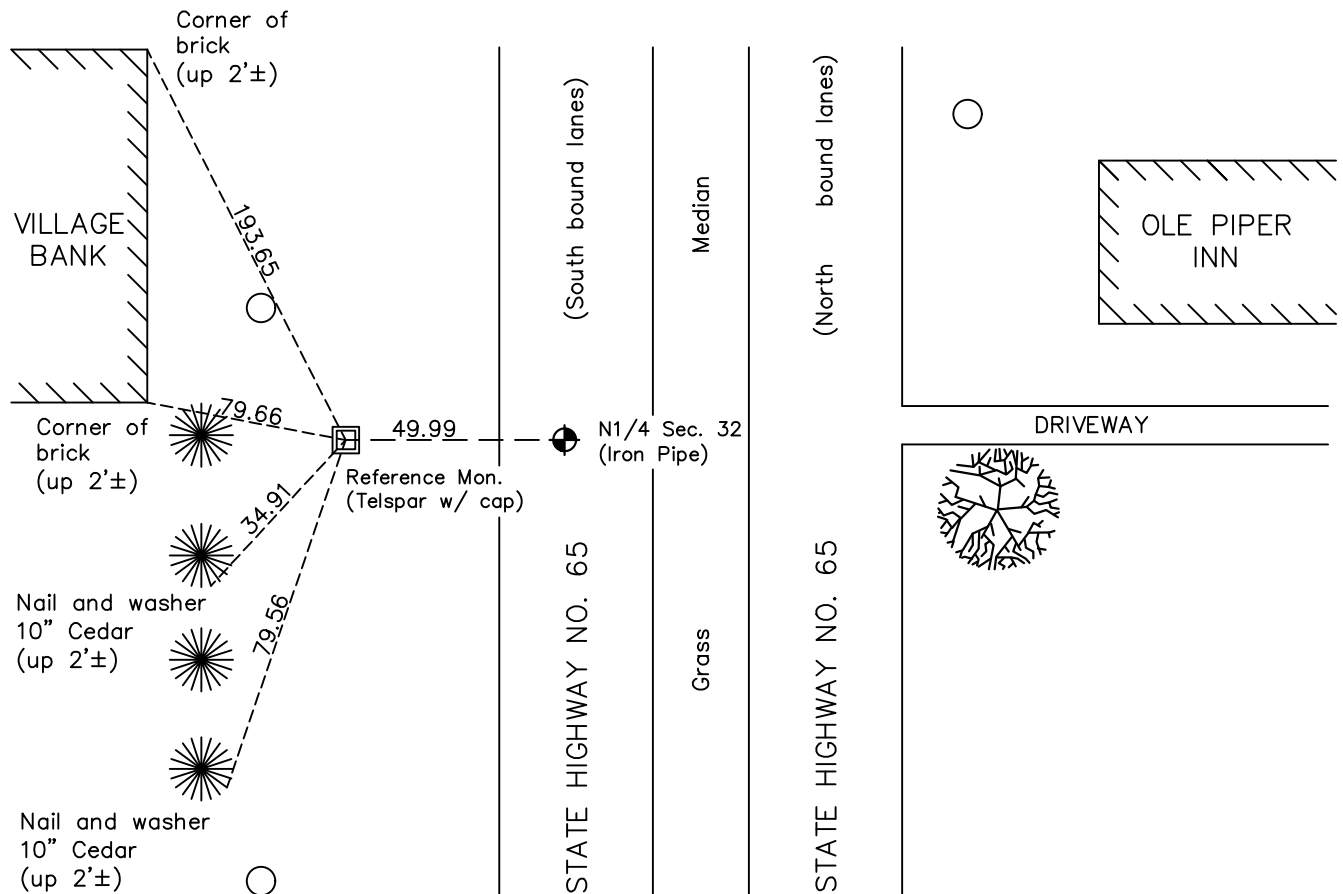
North 1/4 Corner of Sec. 32 Township 31 Range 23

On the 13th day of June, 2023, the described reference monument was evidenced by a computed position 75' westerly along the section line

and to reference the location of said corner, at the exact location thereof, a permanent marker was placed consisting of a 2" square steel Telspar with an aluminum cap and punch mark

AND on the 14th day of June, 2023, said permanent marker was set down 0.2'± using RTK GPS method and ties were established to the reference monument

Updated reference ties are as shown below.



Revision Date
8/07/2023

REFERENCE MONUMENT
N.A.D. 1983 (2011 Adj.)

County Project Coordinates	
Northing	137852.4379
Easting	507991.7974
Date	06/14/2023

HISTORY OF GOVERNMENT CORNER

Page No. 105

County of Anoka

State of Minnesota

North 1/4 Corner of Sec. 32 Township 31 Range 23

CORNER HISTORY:

July 1957 - Milner W. Carley found a spike and established ties to spike.

March 8, 1962 - Found P.K. nail down 0.1' using old ties. Updated ties.

September 1964 - Found P.K. nail and updated ties.

August 28, 1969 - Found P.K. nail and replaced with a cast iron monument flush. Updated ties.

May 16, 1975 - Found cast iron monument down, raised flush and updated ties.

August 11, 1977 - Found cast iron monument and updated ties.

June 19, 1980 - Found cast iron monument and updated ties.

June 11, 1986 - Found cast iron monument and updated ties.

July 11, 1990 - Found cast iron monument and updated ties.

October 24, 1990 - Found cast iron monument and updated ties.

July 18, 1995 - Found cast iron monument and updated ties.

September 6, 2006 - Found cast iron monument missing. Set a 1/2" x 12" iron pipe w/cap using area resurvey. Established NAD 1983 (1996 adj.) Anoka County project coordinates by static GPS methods and updated ties.

December 3, 2021 - Found 1/2" iron pipe w/cap. Verified position by VRS GPS methods.

June 14, 2023 - Found 1/2" iron pipe down 0.1'±. Set **reference monument** to a computed position 50' westerly along the section line using RTK GPS method consisting of a 2" square steel Telspar with an aluminum cap and punch mark, set down 0.2'±. Established ties to the **reference monument**.