

CERTIFICATE OF LOCATION OF GOVERNMENT CORNER

County of Anoka

State of Minnesota

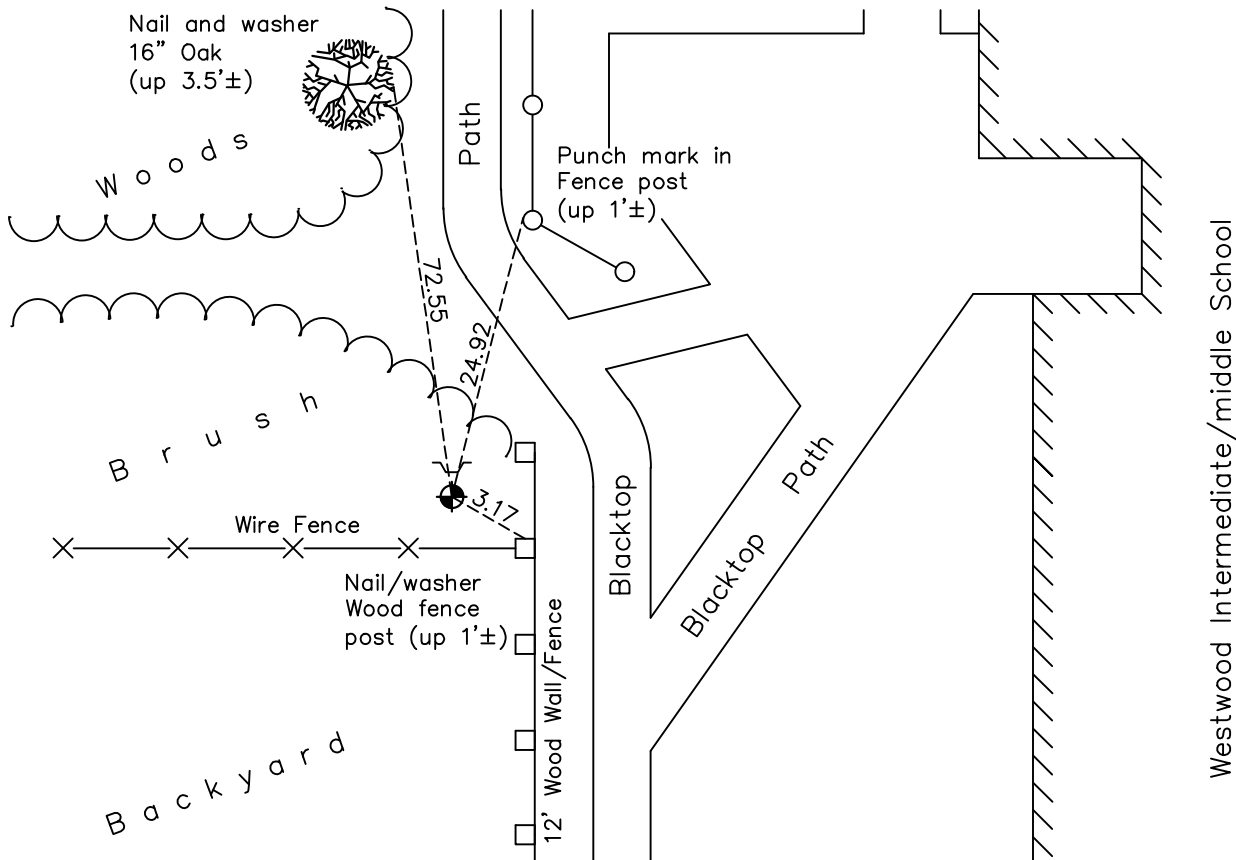
North 1/4 Corner of Sec. 31 Township 31 Range 23

On the 12th day of June, 1964, the described corner was evidenced by a concrete monument

and to perpetuate the location of said corner, at the exact location thereof, a permanent marker was placed consisting of a cast iron monument down 0.5'± with a sign and post 0.5'± north of monument facing north

AND on the 10th day of May, 2022, said permanent marker was found down 0.6'± and the ties were updated

Updated reference ties are as shown below.



Revision Date
 10/19/2022

N.A.D. 1983 Coordinates
 (1996 Adjustment)

County Project Coordinates	
Northing	137849.9453
Easting	502752.6625
Date	6/29/99

I hereby certify that this United States public land survey monument record is correct and complete to the best of my knowledge and belief.
David Zieglmeier Date 2/28/23
 David Zieglmeier Anoka County Surveyor
 Minnesota License Number 46179

HISTORY OF GOVERNMENT CORNER

Page No. 107

County of Anoka

State of Minnesota

North 1/4 Corner of Sec. 31 Township 31 Range 23

CORNER HISTORY:

1958 - Found stone monument down 3" and established ties to monument by Minnesota highway department.

December 19, 1960 - Found concrete monument flush with top broken off. Updated ties.

June 12, 1964 - Found concrete monument and updated ties.

June 28, 1965 - Found concrete monument missing due to sewer construction. Set cast iron monument flush and updated ties.

July 29, 1968 - Found cast iron monument and updated ties.

September 23, 1971 - Found cast iron monument and updated ties.

May 20, 1975 - Found cast iron monument and updated ties.

August 18, 1977 - Found cast iron monument and updated ties.

June 16, 1980 - Found cast iron monument down 0.6'± and updated ties.

July 30, 1990 - Found cast iron monument and added a sign and post on the North side. Updated ties.

June 27, 1995 - Found cast iron monument and updated ties.

June 29, 1999 - Found cast iron monument, established NAD 1983 (1996 adj.) Anoka County project coordinates by static GPS methods and updated ties.

August 2, 2006 - Found cast iron monument and updated ties.

June 17, 2014 - Found cast iron monument and updated ties.

July 2, 2019 - Found cast iron monument down 0.5'±. Verified position by VRS GPS methods. Updated ties.

May 10, 2022 - Found cast iron monument down 0.6'±. Verified position by VRS GPS methods. Updated ties.