

# CERTIFICATE OF LOCATION OF GOVERNMENT CORNER

County of Anoka

State of Minnesota

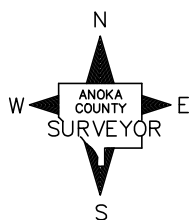
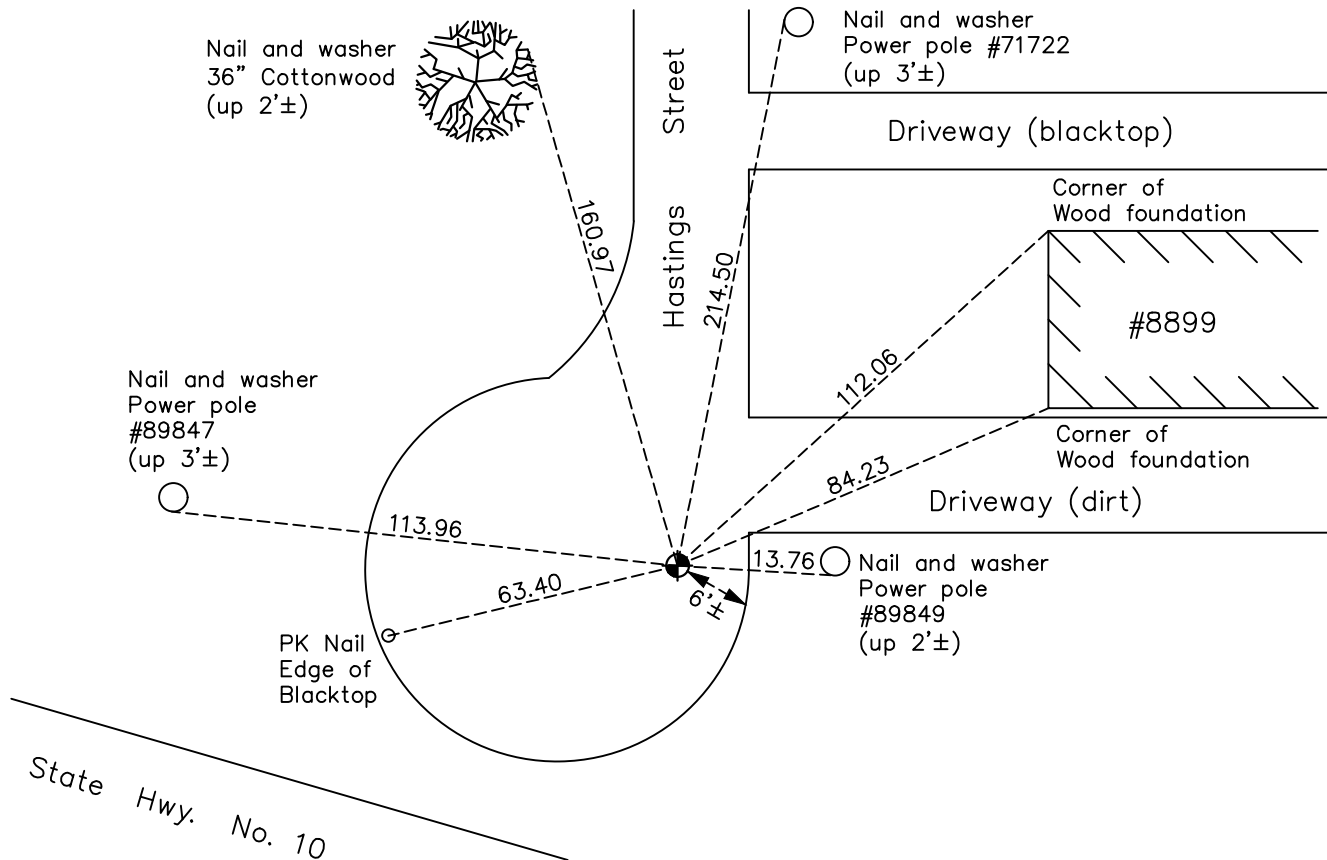
## West 1/4 Corner of Sec. 33 Township 31 Range 23

On the 6th day of August, 1968, the described corner was evidenced by a 1/2" iron pipe

and to perpetuate the location of said corner, at the exact location thereof, a permanent marker was placed consisting of a cast iron monument

AND on the 9th day of May, 2022, said permanent marker was found flush and the ties were updated

Updated reference ties are as shown below.



Revision Date

10/19/2022

N.A.D. 1983 Coordinates  
(1996 Adjustment)

County Project Coordinates	
Northing	<u>135190.1717</u>
Easting	<u>510712.1662</u>
Date	<u>7/08/99</u>

I hereby certify that this United States public land survey monument record is correct and complete to the best of my knowledge and belief.

David Zieglmeier Date 2/28/23

David Zieglmeier Anoka County Surveyor  
Minnesota License Number 46179

# HISTORY OF GOVERNMENT CORNER

Page No. 111

County of Anoka

State of Minnesota

## West 1/4 Corner of Sec. 33 Township 31 Range 23

### **CORNER HISTORY:**

1958 - Found iron pin down 0.3' and updated ties by Minnesota highway department.

March 29, 1963 - Found 1/2" pinched iron pipe down 0.6' and updated ties.

June 15, 1964 - Found 1/2" pinched iron pipe and updated ties.

August 6, 1968 - Found 1/2" pinched iron pipe and replaced with a cast iron monument. Updated ties.

September 24, 1971 - Found cast iron monument and updated ties.

July 18, 1972 - Found cast iron monument and updated ties.

May 14, 1973 - Found cast iron monument missing due to construction. Set P.K. nail until after construction.

August 16, 1977 - Found cast iron monument and updated ties.

June 13, 1980 - Found cast iron monument and updated ties.

June 6, 1986 - Found cast iron monument and updated ties.

August 29, 1988 - Reset 1/2" iron pipe after construction using two ties and area resurvey. Updated ties.

August 31, 1988 - Found 1/2" iron pipe and replaced with a cast iron monument.

June 27, 1990 - Found cast iron monument and updated ties.

July 5, 1995 - Found cast iron monument and updated ties.

July 8, 1999 - Found cast iron monument, established NAD 1983 (1996 adj.) Anoka County project coordinates by static GPS methods and updated ties.

August 2, 2006 - Found cast iron monument and updated ties.

June 18, 2014 - Found cast iron monument, verified position by VRS GPS methods and updated ties.

August 27, 2014 - Found cast iron monument and set construction ties prior to road construction. Removed monument.

October 8, 2014 - Set P.K. nail using construction ties and checked position by static GPS methods.

October 9, 2014 - Found P.K. nail and replaced with a cast iron monument using static GPS methods. Verified position by VRS GPS methods and updated ties.

June 25, 2019 - Found cast iron monument, verified position by VRS GPS methods and updated ties.

May 9, 2022 - Found cast iron monument flush, verified position by VRS GPS methods and updated ties.