

CERTIFICATE OF LOCATION OF GOVERNMENT CORNER

County of Anoka

State of Minnesota

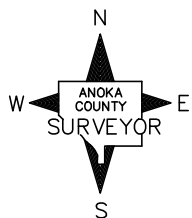
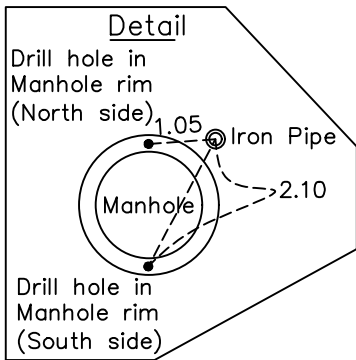
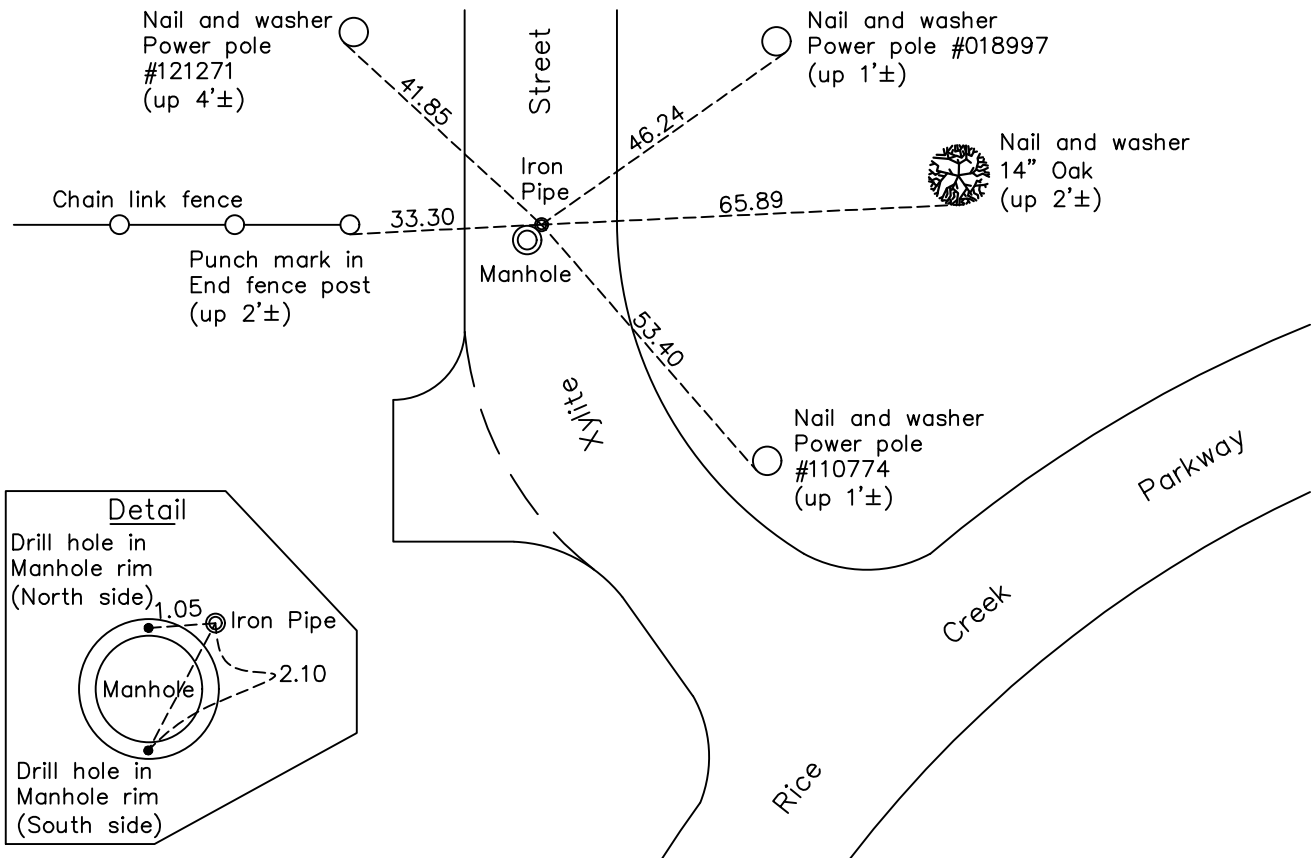
West 1/4 Corner of Sec. 34 Township 31 Range 23

On the 13th day of November, 1964, the described corner was evidenced by area resurvey

and to perpetuate the location of said corner, at the exact location thereof, a permanent marker was placed consisting of a 1/2" iron pipe with Anoka County cap

AND on the 11th day of May, 2022, said permanent marker was found flush and the ties were updated.

Updated reference ties are as shown below.



Revision Date
10/19/2022

N.A.D. 1983 Coordinates
 (1996 Adjustment)

County Project Coordinates	
Northing	<u>135166.4671</u>
Easting	<u>515961.0892</u>
Date	<u>7/29/99</u>

I hereby certify that this United States public land survey monument record is correct and complete to the best of my knowledge and belief.
David Zieglmeier Date 2/28/23
 David Zieglmeier Anoka County Surveyor
 Minnesota License Number 46179

HISTORY OF GOVERNMENT CORNER

Page No. 112

County of Anoka

State of Minnesota

West 1/4 Corner of Sec. 34 Township 31 Range 23

CORNER HISTORY:

November 13, 1964 - Set cast iron monument flush using area resurvey. Established ties to monument.

August 8, 1968 - Found cast iron monument and updated ties.

September 24, 1971 - Found cast iron monument and updated ties.

May 23, 1975 - Found cast iron monument down, raised and updated ties.

August 16, 1977 - Found cast iron monument and updated ties.

June 11, 1980 - Found cast iron monument and updated ties.

May 30, 1986 - Found cast iron monument and updated ties.

July 17, 1990 - Found cast iron monument and updated ties.

June 27, 1995 - Found cast iron monument and updated ties.

February 24, 1997 - Found cast iron monument, set construction ties, updated corner ties prior to construction.

December 30, 1997 - Corner location falls on manhole rim. Cut "V" notch in rim and set p.k. nails 2' north and east. Updated ties to "V" notch

July 29, 1999 - Found "V" notch in manhole rim, established NAD 1983 (1996 adj.) Anoka County project coordinates by static GPS methods and updated ties.

June 15, 2006 - Found "V" notch in manhole rim and updated ties.

June 25, 2014 - Found "V" notch in manhole rim missing. Corner in need of reset. Set temporary p.k. nail using VRS GPS methods and checked position by static GPS methods.

July 8, 2014 - Found temporary p.k. nail and replaced with a capped 1/2" iron pipe using static GPS methods. Verified position by VRS GPS methods and updated ties.

June 24, 2019 - Found capped 1/2" iron pipe, verified position by VRS GPS methods and updated ties.

May 11, 2022 - Found capped 1/2" iron pipe flush, verified position by VRS GPS methods and updated ties.