

CERTIFICATE OF LOCATION OF GOVERNMENT CORNER

County of Anoka

State of Minnesota

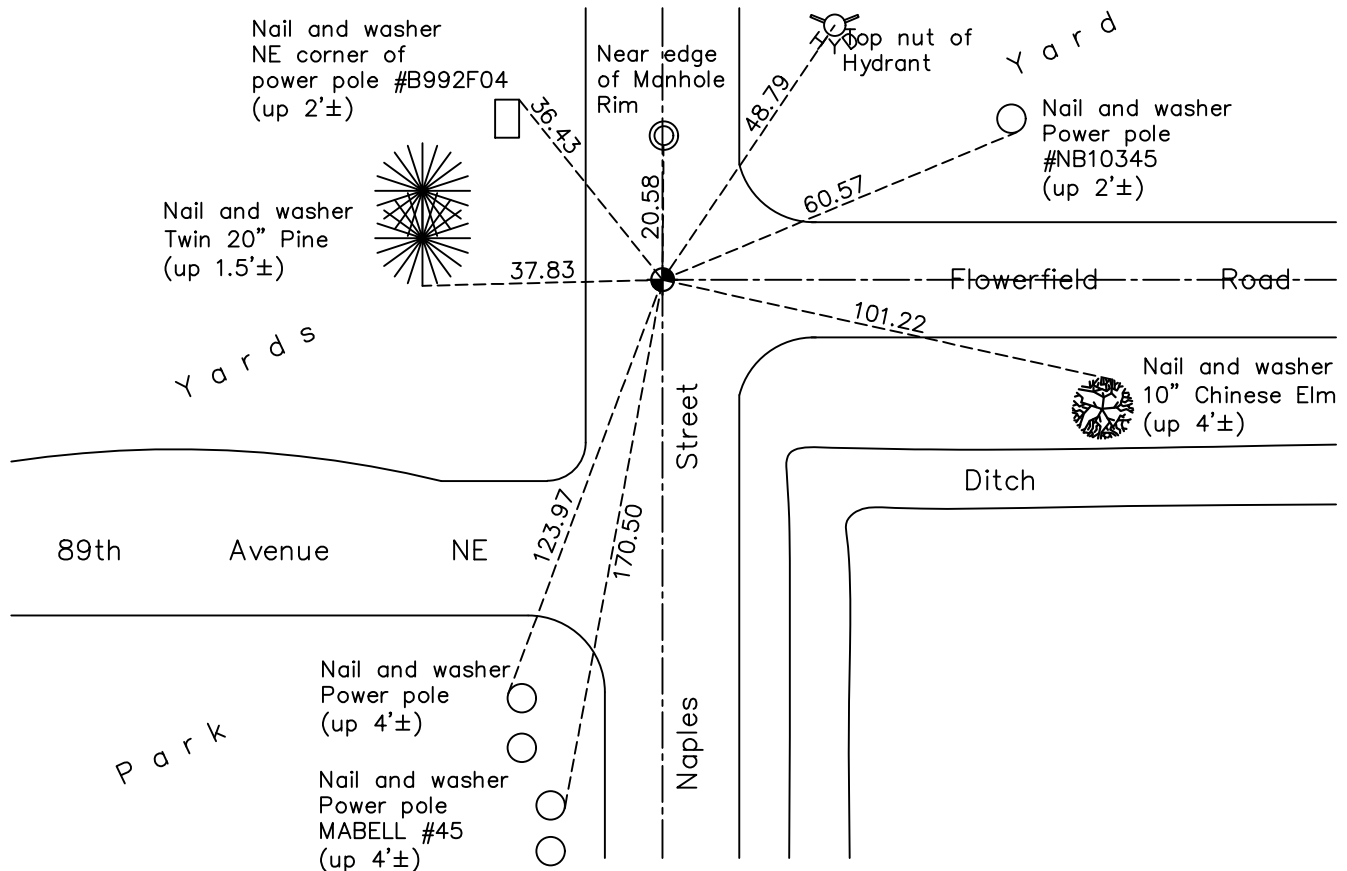
West 1/4 Corner of Sec. 35 Township 31 Range 23

On the 28th day of June, 1966, the described corner was evidenced by construction
ties

and to perpetuate the location of said corner, at the exact location thereof, a permanent marker was placed consisting of a cast iron monument

AND on the 10th day of May, 2022, said permanent marker was found flush and the
ties were updated

Updated reference ties are as shown below.



Revision Date
10/19/2022

N.A.D. 1983 Coordinates
(1996 Adjustment)

County Project Coordinates	
Northing	<u>135141.9097</u>
Easting	<u>521263.3049</u>
Date	<u>10/28/98</u>

I hereby certify that this United States public land survey monument record is correct and complete to the best of my knowledge and belief.

David Zieglmeier Date 2/28/23

David Zieglmeier Anoka County Surveyor
Minnesota License Number 46179

HISTORY OF GOVERNMENT CORNER

Page No. 114

County of Anoka

State of Minnesota

West 1/4 Corner of Sec. 35 Township 31 Range 23

CORNER HISTORY:

Unknown date - Milner W. Carley found a concrete monument (with top bladed off) and updated ties.

May 1956 - Found concrete monument and updated ties by Charles O. Georgi.

October 23, 1961 - Found concrete monument down 0.3' and set an iron on North side. Updated ties.

June 10, 1964 - Found concrete monument with top broken off and updated ties.

June 28, 1966 - Found concrete monument and updated ties prior to road construction.

July 25, 1968 - Found concrete monument and updated ties.

September 27, 1971 - Set cast iron monument and updated ties.

May 29, 1975 - Found cast iron monument and updated ties.

August 16, 1977 - Found cast iron monument and updated ties.

June 10, 1980 - Found cast iron monument and updated ties.

June 3, 1986 - Found cast iron monument and updated ties.

June 21, 1990 - Found cast iron monument and updated ties.

June 27, 1995 - Found cast iron monument and updated ties.

October 28, 1998 - Found cast iron monument, established NAD 1983 (1996 adj.) Anoka County project coordinates by static GPS methods and updated ties.

June 12, 2006 - Found cast iron monument and updated ties.

May 12, 2011 - Found cast iron monument and updated ties prior to road construction. Removed monument.

March 28, 2012 - Set cast iron monument using static GPS methods and updated ties.

June 24, 2014 - Found cast iron monument and updated ties.

June 21, 2019 - Found cast iron monument, verified position by VRS GPS methods and updated ties.

May 10, 2022 - Found cast iron monument flush, verified position by VRS GPS methods and updated ties.