

CERTIFICATE OF LOCATION OF GOVERNMENT CORNER

County of Anoka

State of Minnesota

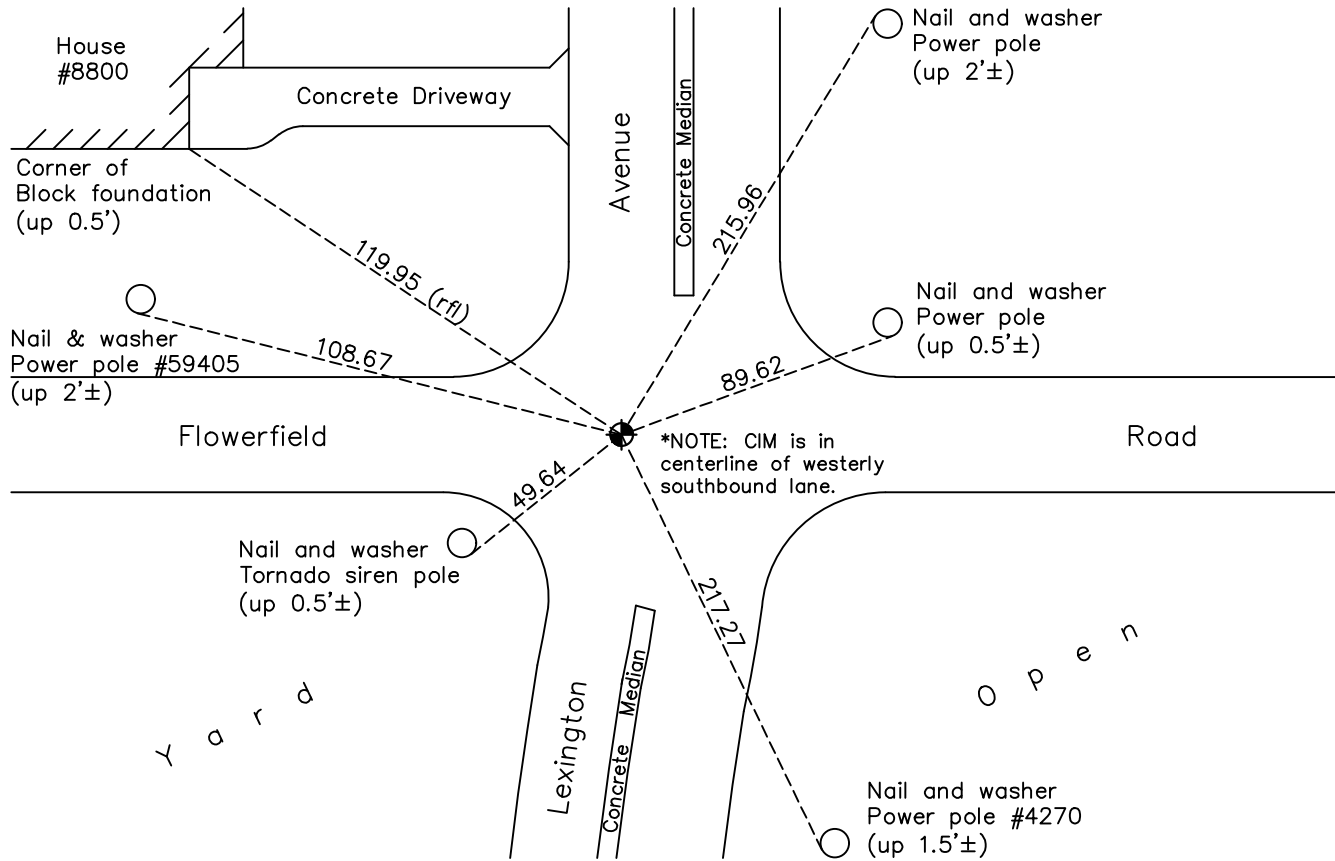
East 1/4 Corner of Sec. 35 Township 31 Range 23

On the 17th day of August, 1971, the described corner was evidenced by a 1/2" solid iron set on top of concrete monument

and to perpetuate the location of said corner, at the exact location thereof, a permanent marker was placed consisting of a cast iron monument set on top of concrete monument

AND on the 1st day of November, 2023, said permanent marker was reset 8" CIM after Road Const, set in concrete, using static GPS method. Updated ties and verified position w/ RTK GPS

Updated reference ties are as shown below.



Revision Date
11/06/2023

N.A.D. 1983 Coordinates
(1996 Adjustment)

County Project Coordinates	
Northing	<u>135116.1362</u>
Easting	<u>526570.1101</u>
Date	<u>10/19/98</u>

I hereby certify that this United States public land survey monument record is correct and complete to the best of my knowledge and belief.

David Zieglermeier Date 12/7/23

David M. Zieglermeier Anoka County Deputy Surveyor
Minnesota License Number 46179

HISTORY OF GOVERNMENT CORNER

Page No. 116

County of Anoka

State of Minnesota

East 1/4 Corner of Sec. 35 Township 31 Range 23

CORNER HISTORY:

May 1956 - Found concrete monument and updated ties by Charles O. Georgi.

10/23/61, 6/10/64, 7/25/68 - Found concrete monument down 1' with a 1/2" solid iron on top flush w/road. Updated ties.

August 17, 1971 - Found concrete monument down 1' with a 1/2" solid iron on top flush w/road. Replaced 1/2" solid iron with a cast iron monument on top of concrete monument and updated ties.

5/22/75, 8/17/77, 6/10/80, 6/2/86, 7/19/90, 6/26/95 - Found cast iron monument and updated ties.

October 19, 1998 - Found cast iron monument, established NAD 1983 (1996 adj.) Anoka County project coordinates by static GPS methods and updated ties.

May 29, 2001 - Found cast iron monument, set construction ties and updated corner ties prior to road construction. Removed monument.

6/5/02, 6/12/06 - Found cast iron monument and updated ties.

June 26, 2014 - Found cast iron monument broken. Checked corner ties to center fin of broken monument.

July 9, 2014 - Set cast iron monument using static GPS methods. Verified position by VRS GPS methods and updated ties.

June 28, 2019 - Found cast iron monument broken.

May 15, 2020 - Partially removed found broken CIM and replaced with short cast iron monument. Verified position by VRS GPS methods and updated ties

May 23, 2022 - Found cast iron monument flush, verified position by VRS GPS and updated ties.

April 14, 2023 - Removed top of cast iron monument for road construction. Then, fully removed 8" CIM, 8/17/23.

November 1, 2023 - Reset 8" Cast Iron Monument after Road Construction, set in concrete, using static GPS method. Updated ties after setting and verified position with RTK GPS method.