

# CERTIFICATE OF LOCATION OF GOVERNMENT CORNER

County of Anoka

State of Minnesota

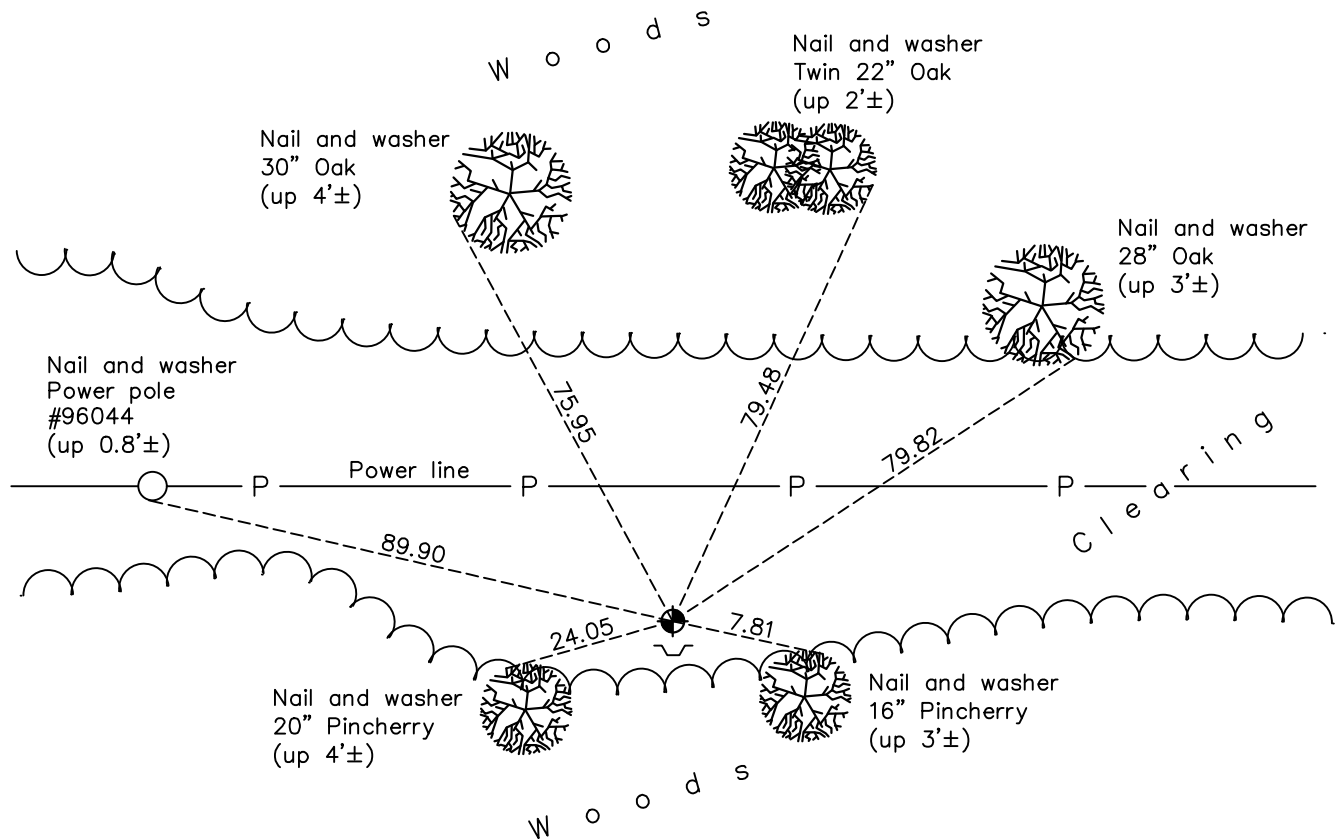
## East 1/4 Corner of Sec. 36 Township 31 Range 23

On the 5th day of August, 1964, the described corner was evidenced by a 1/2" iron pipe

and to perpetuate the location of said corner, at the exact location thereof, a permanent marker was placed consisting of a cast iron monument with a sign and post on the south side

AND on the 17th day of May, 2022, said permanent marker was found down 0.4'± and  
and the ties were updated

Updated reference ties are as shown below.



Revision Date

10/20/2022

N.A.D. 1983 Coordinates  
(1996 Adjustment)

County Project Coordinates	
Northing	<u>135042.8985</u>
Easting	<u>531864.3778</u>
Date	<u>2/09/00</u>

I hereby certify that this United States public land survey monument record is correct and complete to the best of my knowledge and belief.

*David Zieglmeier* Date 2/28/23

David Zieglmeier Anoka County Surveyor  
Minnesota License Number 46179

# HISTORY OF GOVERNMENT CORNER

Page No. 117

County of Anoka

State of Minnesota

## East 1/4 Corner of Sec. 36 Township 31 Range 23

### **CORNER HISTORY:**

August 5, 1964 - Found 1/2" iron pipe set by Suburban Engineering and replaced with a cast iron monument up 0.3'. Updated ties.

April 24, 1969 - Reset cast iron monument down 0.2'± using one remaining corner tie, lot corner and point on line to the north. Updated ties.

October 5, 1971 - Found cast iron monument and updated ties.

June 3, 1975 - Found cast iron monument and updated ties.

August 17, 1977 - Found cast iron monument and updated ties.

June 16, 1980 - Found cast iron monument and updated ties.

July 31, 1990 - Found cast iron monument with sign and post on the South side. Updated ties.

August 7, 1995 - Found cast iron monument and updated ties.

February 9, 2000 - Found cast iron monument, established NAD 1983 (1996 adj.) Anoka County project coordinates by static GPS methods and updated ties.

December 12, 2013 - Found cast iron monument, verified position by VRS GPS methods and updated ties.

July 18, 2014 - Found cast iron monument and updated ties.

July 25, 2019 - Found cast iron monument, verified position by VRS GPS methods and updated ties.

May 17, 2022 - Found cast iron monument down 0.4'±, verified position by VRS GPS methods and updated ties.