

CERTIFICATE OF LOCATION OF GOVERNMENT CORNER

County of Anoka

State of Minnesota

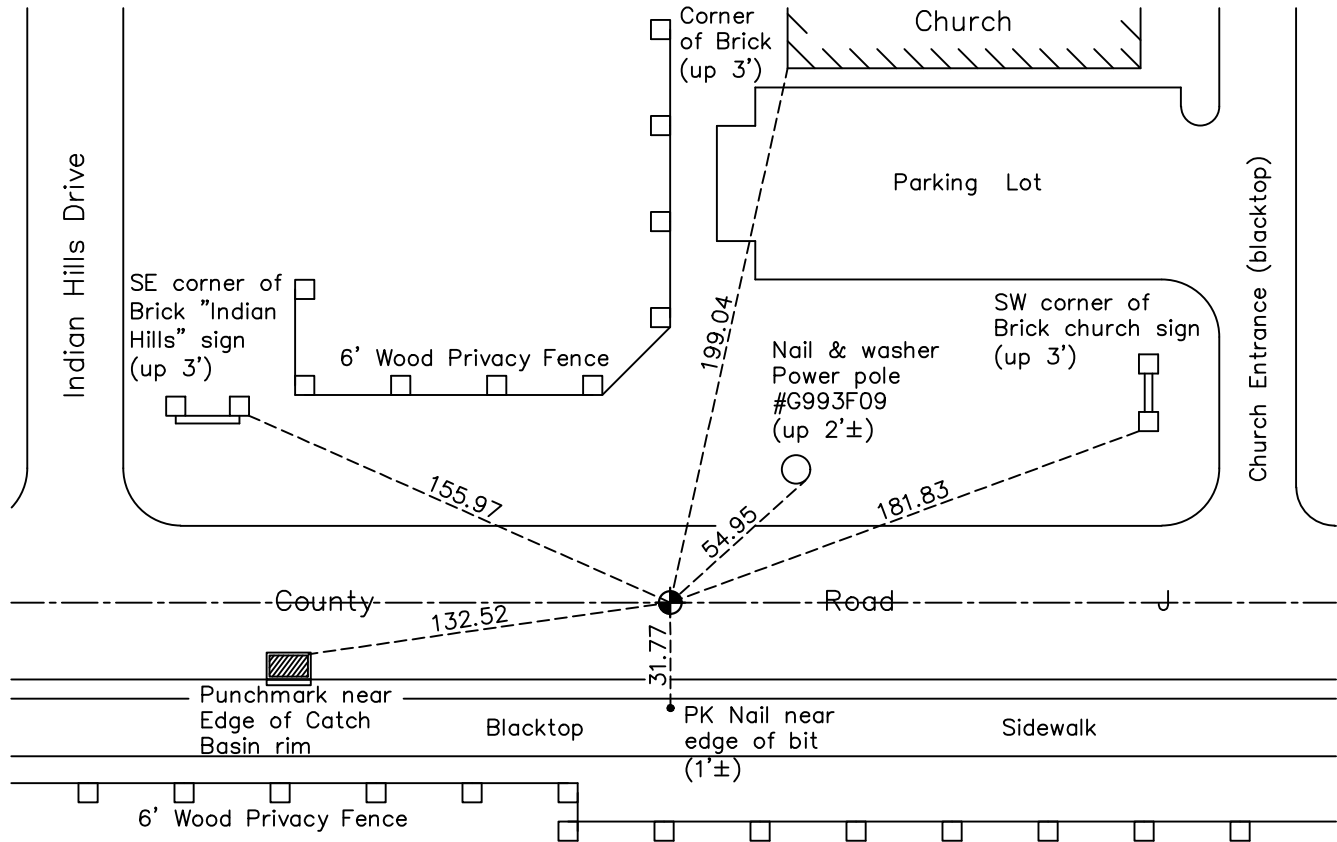
Southeast Corner of Sec. 36 Township 31 Range 23

On the 9th day of April, 1962, the described corner was evidenced by a 1/2" bridge spike

and to perpetuate the location of said corner, at the exact location thereof, a permanent marker was placed consisting of a cast iron monument

AND on the 17th day of May, 2022, said permanent marker was found flush and the ties were updated

Updated reference ties are as shown below.



Revision Date
 10/20/2022

N.A.D. 1983 Coordinates
 (1996 Adjustment)

County Project Coordinates	
Northing	132448.4878
Easting	531839.8455
Date	6/25/98

I hereby certify that this United States public land survey monument record is correct and complete to the best of my knowledge and belief.

David Zieglmeier Date 2/28/23

David Zieglmeier Anoka County Surveyor
 Minnesota License Number 46179

HISTORY OF GOVERNMENT CORNER

Page No. 117A

County of Anoka

State of Minnesota

Southeast Corner of Sec. 36 Township 31 Range 23

CORNER HISTORY:

December 10, 1944 - Harvey A. Cartwright found a concrete monument and updated ties.

April 9, 1962 - Found 1/2" square bridge spike down 1' which fits old tie. Dug down 3' couldn't find concrete monument. Replaced bridge spike with cast iron monument using Cartwright tie. Updated ties.

June 16, 1965 - Found cast iron monument and updated ties.

November 5, 1990 - Found cast iron monument and updated ties.

October 24, 1991 - Found cast iron monument and updated ties.

August 17, 1993 - Found cast iron monument and updated ties.

June 7, 1995 - Found cast iron monument and updated ties.

June 25, 1998 - Found cast iron monument, established NAD 1983 (1996 adj.) Anoka County project coordinates by static GPS methods and updated ties.

June 14, 2006 - Found cast iron monument and updated ties.

July 18, 2014 - Found cast iron monument, verified position by VRS GPS methods and updated ties.

July 28, 2016 - Found cast iron monument and raised flush after road construction. Updated ties.

June 28, 2019 - Found cast iron monument, verified position by VRS GPS methods and updated ties.

May 17, 2022 - Found cast iron monument flush, verified position by VRS GPS methods and updated ties.