

CERTIFICATE OF LOCATION OF GOVERNMENT CORNER

County of Anoka

State of Minnesota

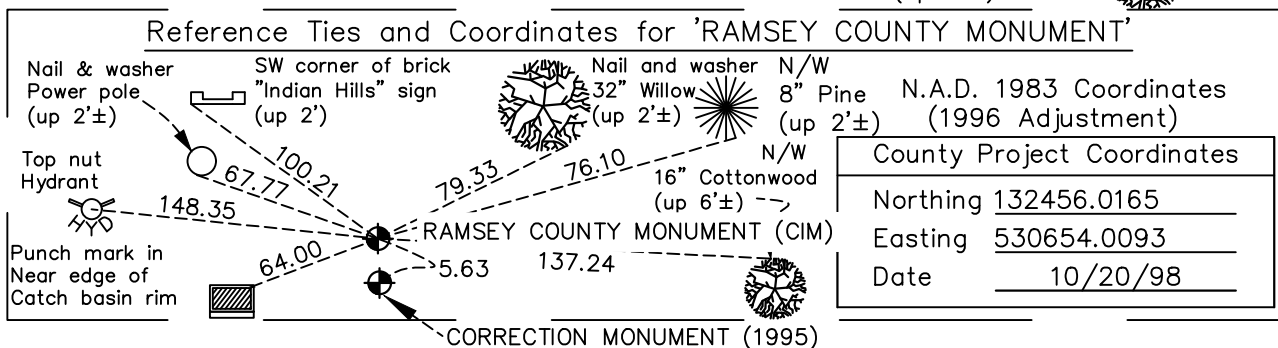
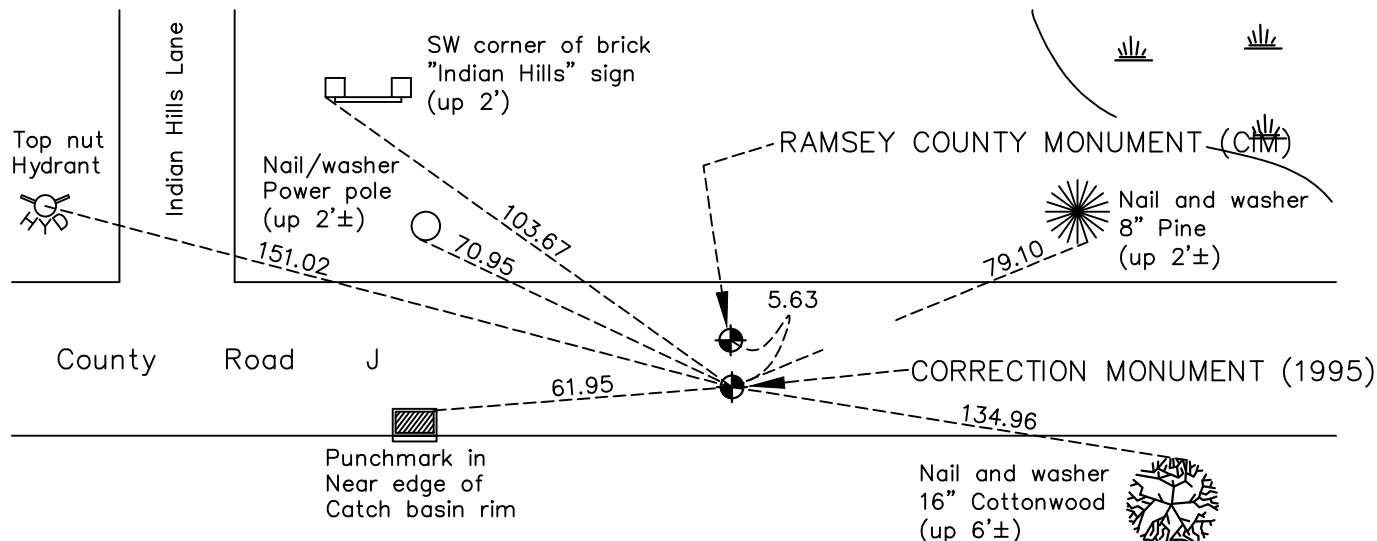
Northeast Corner of Sec. 3 Township 30 Range 23 (RAMSEY COUNTY MONUMENT)

On the 26th day of April, 1963, the described corner was evidenced by a granite monument

and to perpetuate the location of said corner, at the exact location thereof, a permanent marker was placed consisting of a cast iron monument

AND on the 17th day of May, 2022, said permanent marker was found both monuments flush and the ties were updated

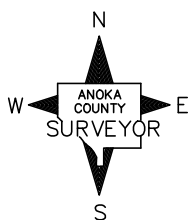
Updated reference ties are as shown below.



'CORRECTION MONUMENT (1995)'
N.A.D. 1983 Coordinates
(1996 Adjustment)

County Project Coordinates	
Northing	132450.2762
Easting	530654.1274
Date	10/19/98

I hereby certify that this United States public land survey monument record is correct and complete to the best of my knowledge and belief.
David Zieglmeier Date 2/28/23
David Zieglmeier Anoka County Surveyor
Minnesota License Number 46179



Revision Date
10/20/2022

HISTORY OF GOVERNMENT CORNER

Page No. 118

County of Anoka

State of Minnesota

Northeast Corner of Sec. 3 Township 30 Range 23 (RAMSEY COUNTY MONUMENT)

CORNER HISTORY:

April 26, 1963 - Found 8" square granite monument flush with a drill hole in the center. Updated ties.

September 17, 1964 - Found granite monument and updated ties.

July 25, 1968 - Found granite monument and updated ties.

October 5, 1971 - Found granite monument and updated ties.

May 27, 1975 - Found granite monument and updated ties.

June 10, 1980 - Found granite monument and updated ties.

July 25, 1990 - Found granite monument and updated ties.

June 7, 1995 - Found granite monument and updated ties.

October 19, 1998 - Found cast iron monument (1995 Correction monument) and updated ties. Established NAD 1983 (1996 adj.) Anoka County project coordinates by static GPS methods.

October 20, 1998 - Found cast iron monument (Ramsey County monument) and updated ties. Established NAD 1983 (1996 adj.) Anoka County project coordinates by static GPS methods.

July 17, 2014 - Found Ramsey County and 1995 Correction cast iron monuments. Verified both positions by VRS GPS methods and updated ties.

June 27, 2019 - Found a cast iron monument (Ramsey County)

May 17, 2022 - Found Ramsey County and 1995 Correction cast iron monuments. Verified both positions by VRS GPS methods and updated ties. Ramsey County monument ± 5.6 feet north of Correction monument.