

CERTIFICATE OF LOCATION OF GOVERNMENT CORNER

County of Anoka

State of Minnesota

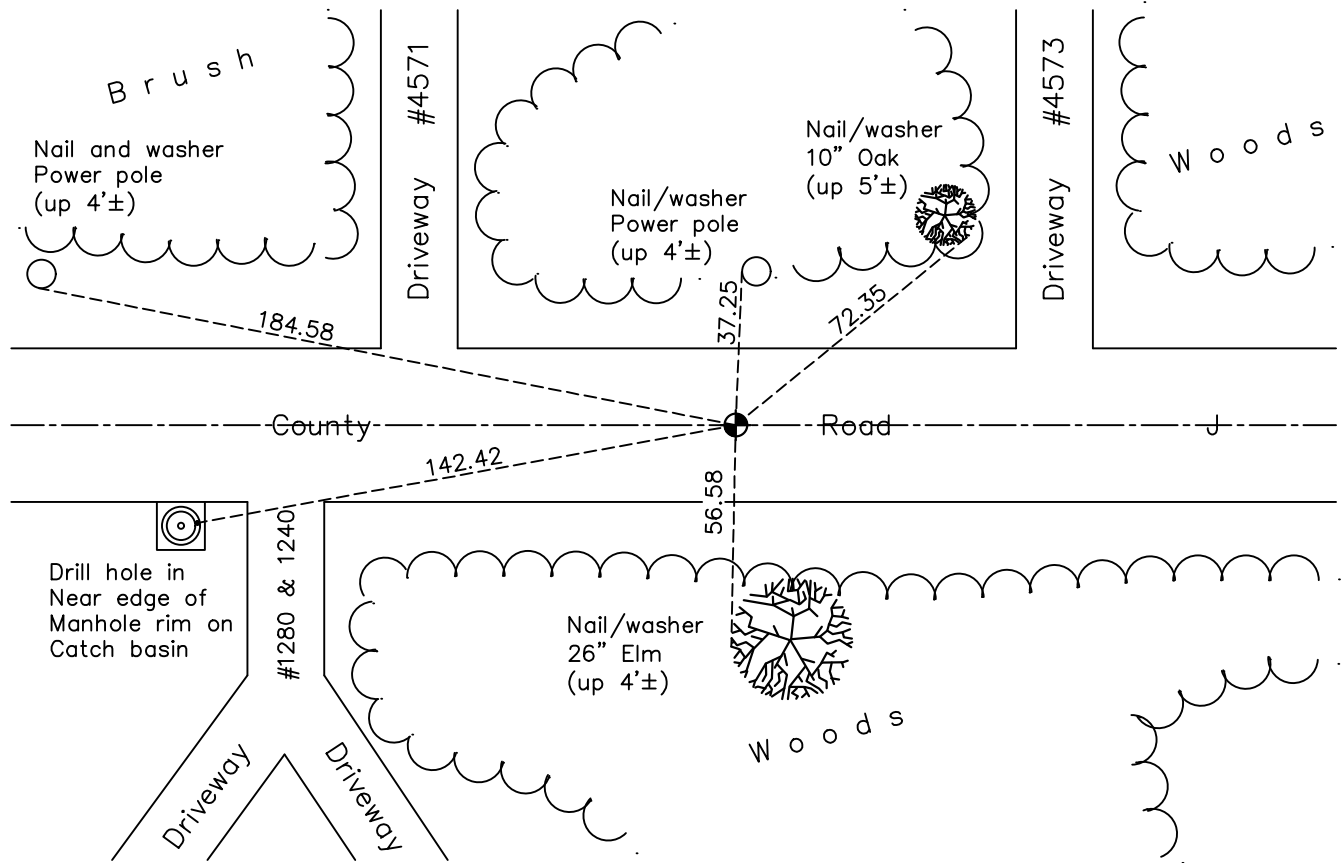
South 1/4 Corner of Sec. 36 Township 31 Range 23

On the 11th day of July, 1963, the described corner was evidenced by area resurvey

and to perpetuate the location of said corner, at the exact location thereof, a permanent marker was placed consisting of a cast iron monument

AND on the 20th day of May, 2022, said permanent marker was found flush and the ties were updated

Updated reference ties are as shown below.



Revision Date
 10/20/2022

N.A.D. 1983 Coordinates
 (1996 Adjustment)

County Project Coordinates	
Northing	132452.6685
Easting	529199.0500
Date	10/19/98

I hereby certify that this United States public land survey monument record is correct and complete to the best of my knowledge and belief.

David Zieglmeier Date 2/28/23

David Zieglmeier Anoka County Surveyor
 Minnesota License Number 46179

HISTORY OF GOVERNMENT CORNER

Page No. 119

County of Anoka

State of Minnesota

South 1/4 Corner of Sec. 36 Township 31 Range 23

CORNER HISTORY:

July 11, 1963 - Set cast iron monument flush using area resurvey and established ties to monument.

June 10, 1964 - Found cast iron monument and updated ties.

July 25, 1968 - Found cast iron monument and updated ties.

October 5, 1971 - Found cast iron monument and updated ties.

May 27, 1975 - Found cast iron monument and updated ties.

August 12, 1977 - Found cast iron monument and updated ties.

June 10, 1980 - Found cast iron monument and updated ties.

June 28, 1983 - Found cast iron monument and updated ties.

June 10, 1986 - Found cast iron monument and updated ties.

July 25, 1990 - Found cast iron monument and updated ties.

August 17, 1993 - Found cast iron monument down, raised flush and updated ties after construction.

June 7, 1995 - Found cast iron monument and updated ties.

October 19, 1998 - Found cast iron monument, established NAD 1983 (1996 adj.) Anoka County project coordinates by static GPS methods and updated ties.

June 14, 2006 - Found cast iron monument and updated ties.

July 2014 - Found cast iron monument, verified position by VRS GPS methods and updated ties.

June 6, 2016 - Found cast iron monument and removed 3" of risers prior to mill and overlay road construction.

July 28, 2016 - Found cast iron monument down and raised flush after road construction. Verified position by VRS GPS methods and updated ties.

June 27, 2019 - Found cast iron monument and updated ties.

May 20, 2022 - Found cast iron monument flush, verified position by VRS GPS method and updated ties