

# CERTIFICATE OF LOCATION OF GOVERNMENT CORNER

County of Anoka

State of Minnesota

## North 1/4 Corner of Sec. 3 Township 30 Range 23

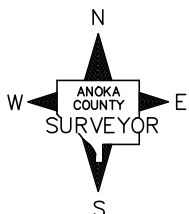
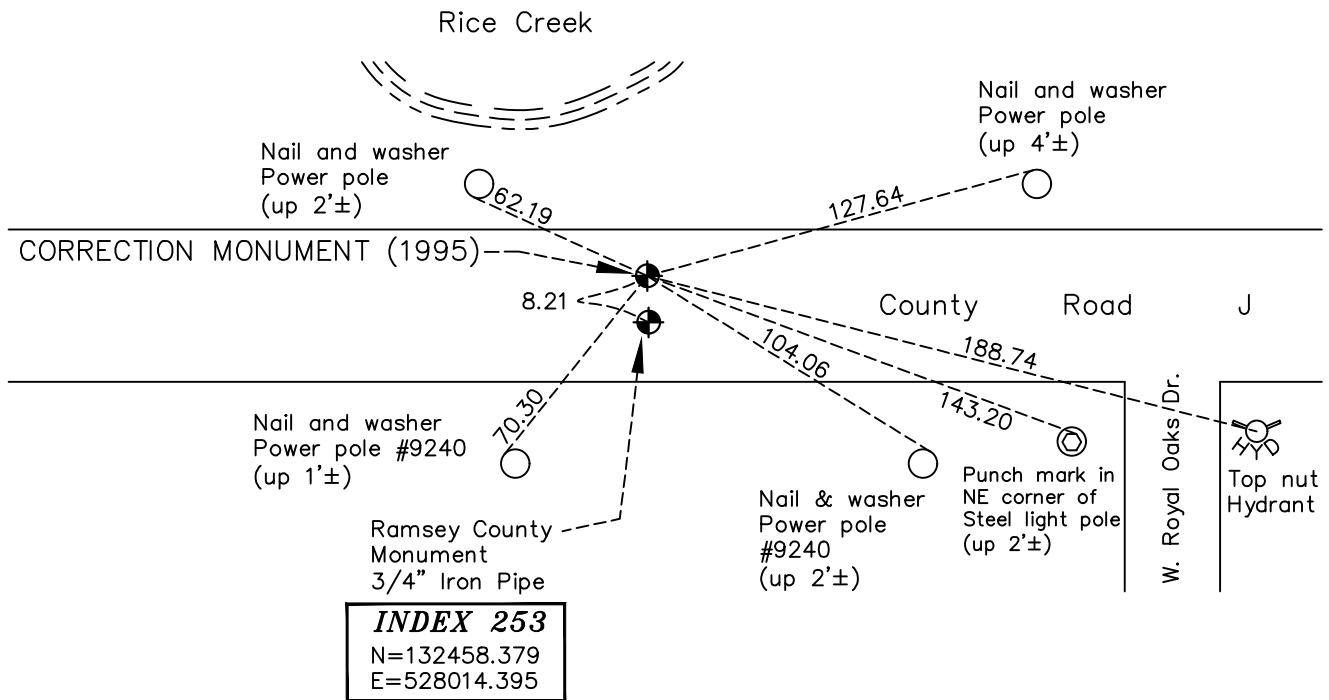
(Correction Monument (1995))

On the 26th day of April, 1963, the described corner was evidenced by a granite monument

and to perpetuate the location of said corner, at the exact location thereof, a permanent marker was placed consisting of a cast iron monument

AND on the 20th day of May, 2022, said permanent marker was found flush and the ties were updated. The RAMSEY COUNTY MONUMENT to South is a 3/4" Iron Pipe on centerline.

Updated reference ties are as shown below.



Revision Date

1/24/2023

N.A.D. 1983 Coordinates  
(1996 Adjustment)

County Project Coordinates

Northing 132458.3791

Easting 528014.3947

Date 10/19/98

I hereby certify that this United States public land survey monument record is correct and complete to the best of my knowledge and belief.

*David Zieglmeier* Date 2/28/23

David Zieglmeier Anoka County Surveyor

Minnesota License Number 46179

# HISTORY OF GOVERNMENT CORNER

Page No. 120

County of Anoka

State of Minnesota

## North 1/4 Corner of Sec. 3 Township 30 Range 23 (RAMSEY COUNTY MONUMENT)

### **CORNER HISTORY:**

April 26, 1963 - Found 8" x 8" granite monument down 0.5' with a drill hole in the center. Updated ties.

September 17, 1964 - Found granite monument and updated ties.

July 31, 1968 - Found granite monument with a 3/4" iron pipe flush. Updated ties.

October 5, 1971 - Found granite monument with a 3/4" iron pipe flush. Updated ties.

May 27, 1975 - Found granite monument with a 3/4" iron pipe flush. Updated ties.

August 12, 1977 - Found granite monument with a 3/4" iron pipe flush. Updated ties.

June 10, 1980 - Found granite monument with a 3/4" iron pipe flush. Updated ties.

June 10, 1986 - Found cast iron monument and updated ties.

July 25, 1990 - Found cast iron monument and updated ties.

June 7, 1995 - Found cast iron monument and updated ties.

October 19, 1998 - Found cast iron monument (1995 Correction monument) and updated ties. Established NAD 1983 (1996 adj.) Anoka County project coordinates by static GPS methods.

July 2014 - Found Ramsey County and 1995 Correction cast iron monuments. Verified both positions by VRS GPS methods and updated ties.

June 27, 2019 - Found Ramsey County and 1995 Correction cast iron monuments. Verified both positions by VRS GPS methods and updated ties.

May 20, 2022 - Found Ramsey County 3/4 " Iron pipe and 1995 Correction cast iron monuments flush. Verified both positions by VRS GPS methods and updated ties.