

CERTIFICATE OF LOCATION OF GOVERNMENT CORNER

County of Anoka

State of Minnesota

Northwest Corner of Sec. 3 Township 30 Range 23

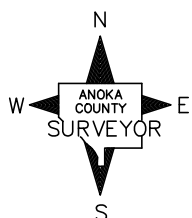
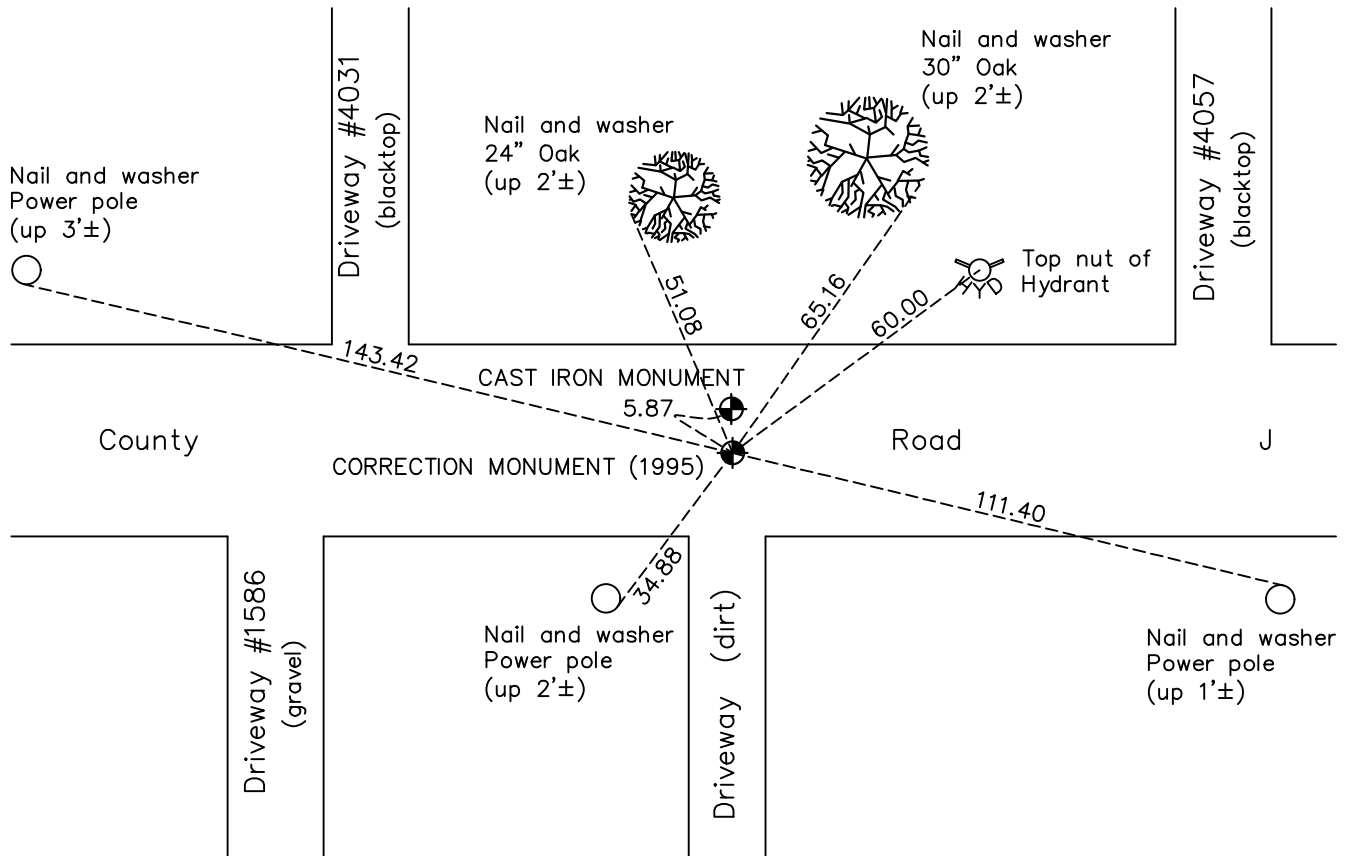
(RAMSEY COUNTY MONUMENT)

On the 1st day of October, 1971, the described corner was evidenced by an 8" square granite monument

and to perpetuate the location of said corner, at the exact location thereof, a permanent marker was placed consisting of a cast iron monument (Correction Monument 1995)

AND on the 20th day of May, 2022, said permanent marker was found flush and the ties were updated

Updated reference ties are as shown below.



Revision Date
 10/20/2022

N.A.D. 1983 Coordinates
 (1996 Adjustment)

County Project Coordinates	
Northing	132471.9006
Easting	525375.4397
Date	8/03/99

I hereby certify that this United States public land survey monument record is correct and complete to the best of my knowledge and belief.

David Zieglmeier Date 2/28/23

David Zieglmeier Anoka County Surveyor
 Minnesota License Number 46179

HISTORY OF GOVERNMENT CORNER

Page No. 122

County of Anoka

State of Minnesota

Northwest Corner of Sec. 3 Township 30 Range 23 (RAMSEY COUNTY MONUMENT)

CORNER HISTORY:

April 26, 1963 - Found 8" x 8" granite monument down 0.2' with a drill hole in the center. Updated ties.

September 17, 1964 - Found granite monument and updated ties.

October 1, 1971 - Found cast iron monument flush and updated ties.

May 27, 1975 - Found cast iron monument and updated ties.

August 12, 1977 - Found cast iron monument and updated ties.

June 11, 1980 - Found cast iron monument and updated ties.

June 2, 1986 - Found cast iron monument and updated ties.

July 25, 1990 - Found cast iron monument and updated ties.

June 27, 1995 - Found cast iron monument and updated ties.

August 3, 1999 - Found Ramsey County and 1995 Correction cast iron monuments. Established NAD 1983 (1996 adj.) Anoka County project coordinates by static GPS methods and updated ties to 1995 correction monument.

July 16, 2014 - Found 1995 Correction cast iron monument. Verified position by VRS GPS methods and updated ties.

June 26, 2019 - Found 1995 Correction cast iron monument. Verified position by VRS GPS methods and updated ties.

May 20, 2022 - Found 1995 Correction cast iron monument Flush. Verified position by VRS GPS methods and updated ties.