

# CERTIFICATE OF LOCATION OF GOVERNMENT CORNER

County of Anoka

State of Minnesota

## North 1/4 Corner of Sec. 4 Township 30 Range 23

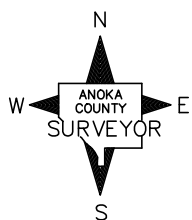
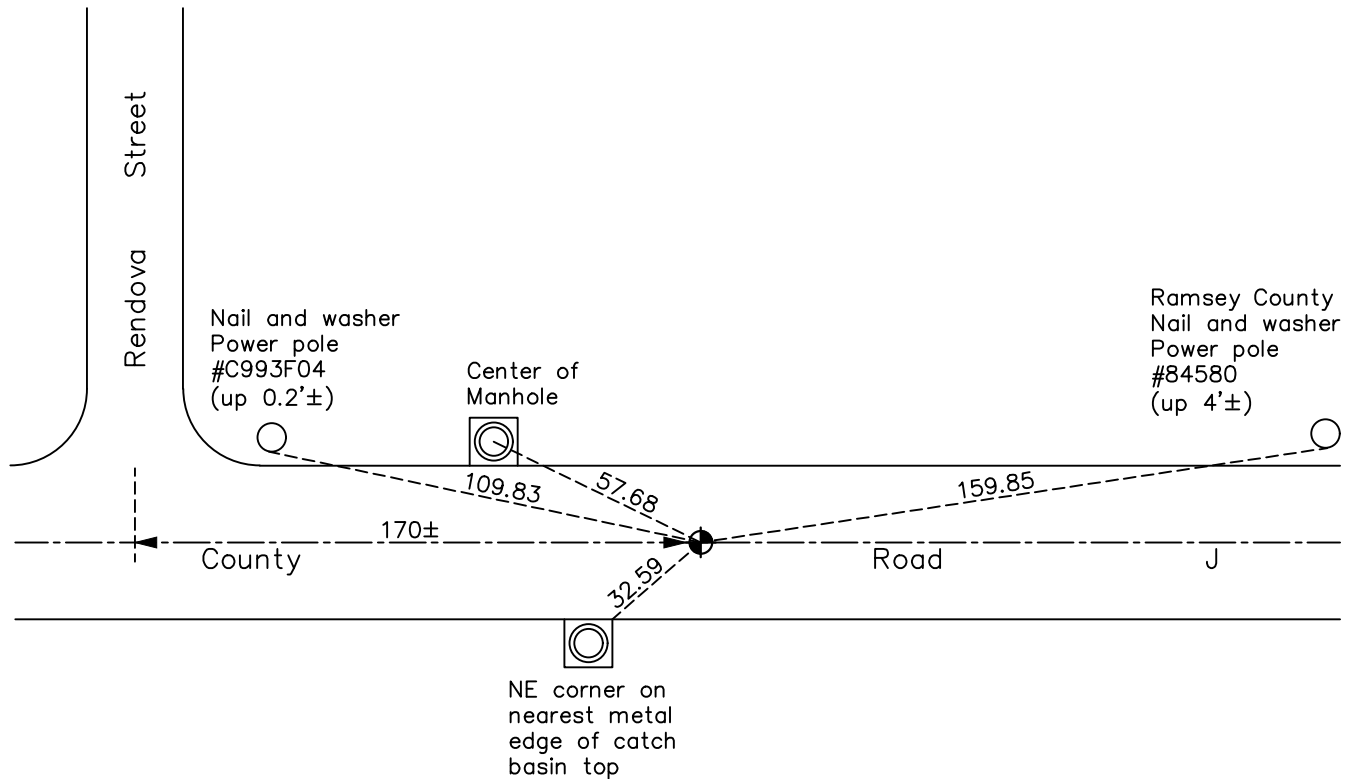
(RAMSEY COUNTY MONUMENT)

On the 29th day of October, 1964, the described corner was evidenced by a railroad spike

and to perpetuate the location of said corner, at the exact location thereof, a permanent marker was placed consisting of a cast iron monument

AND on the 11th day of May, 2022, said permanent marker was found and the ties were updated

Updated reference ties are as shown below.



Revision Date

10/20/2022

N.A.D. 1983 Coordinates  
(1996 Adjustment)

County Project Coordinates	
Northing	132481.1738
Easting	522752.5991
Date	8/03/99

I hereby certify that this United States public land survey monument record is correct and complete to the best of my knowledge and belief.

*David Zieglmeier* Date 2/28/23

David Zieglmeier Anoka County Surveyor  
Minnesota License Number 46179

# HISTORY OF GOVERNMENT CORNER

Page No. 124

County of Anoka

State of Minnesota

North 1/4 Corner of Sec. 4 Township 30 Range 23  
(RAMSEY COUNTY MONUMENT)

## **CORNER HISTORY:**

October 29, 1964 - Found railroad spike down 0.2' and fits 3 remaining Ramsey County ties. Updated ties.

July 31, 1968 - Found 3/4" iron pipe flush and updated ties.

October 1, 1971 - Found 3/4" iron pipe and updated ties.

May 27, 1975 - Found 3/4" iron pipe and updated ties.

August 12, 1977 - Found cast iron monument flush and updated ties.

June 11, 1980 - Found cast iron monument flush and updated ties.

July 27, 1990 - Found cast iron monument and updated ties.

June 27, 1995 - Found cast iron monument and updated ties.

August 3, 1999 - Found cast iron monument, established NAD 1983 (1996 adj.) Anoka County project coordinates by static GPS methods and updated ties.

July 15, 2014 - Found cast iron monument, verified position by VRS GPS methods and updated ties.

July 3, 2019 - Found cast iron monument and updated ties.

May 11, 2022 - Found cast iron monument, verified position by VRS GPS method and updated ties.