

CERTIFICATE OF LOCATION OF GOVERNMENT CORNER

County of Anoka

State of Minnesota

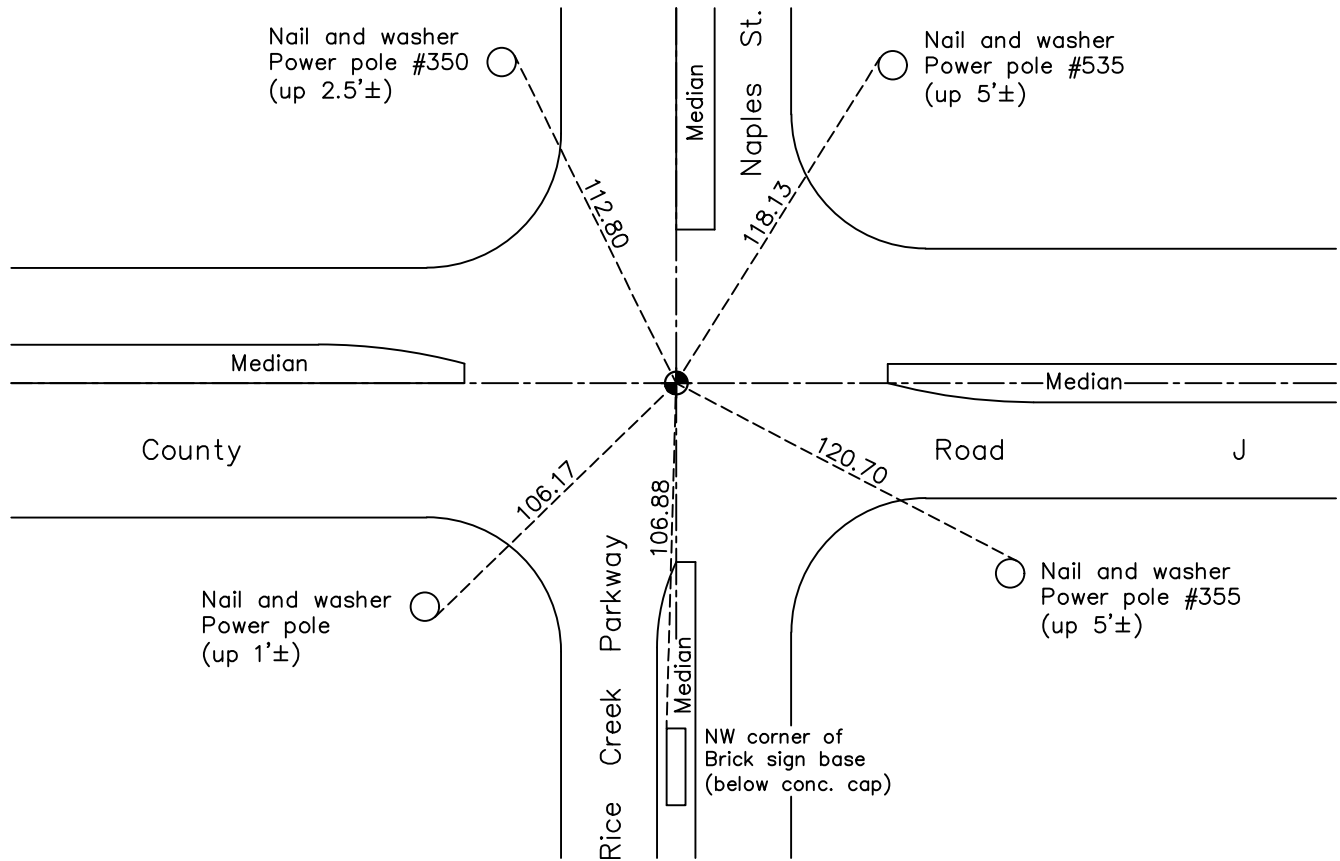
Southeast Corner of Sec. 34 Township 31 Range 23

On the 27th day of October, 1964, the described corner was evidenced by area resurvey

and to perpetuate the location of said corner, at the exact location thereof, a permanent marker was placed consisting of a cast iron monument

AND on the 23rd day of May, 2022, said permanent marker was found flush and the ties were updated.

Updated reference ties are as shown below.



Revision Date
 10/21/2022

N.A.D. 1983 Coordinates
 (1996 Adjustment)

County Project Coordinates	
Northing	132483.1118
Easting	521287.3102
Date	7/27/99

I hereby certify that this United States public land survey monument record is correct and complete to the best of my knowledge and belief.

David Zieglmeier Date 2/28/23

David Zieglmeier Anoka County Surveyor
 Minnesota License Number 46179

HISTORY OF GOVERNMENT CORNER

Page No. 125

County of Anoka

State of Minnesota

Southeast Corner of Sec. 34 Township 31 Range 23

CORNER HISTORY:

October 27, 1964 - Found 1/2" iron pipe down 0.2' and updated ties.

September 14, 1967 - Found 1/2" iron pipe and replaced with a cast iron monument flush. Updated ties.

July 31, 1968 - Found cast iron monument and updated ties.

September 27, 1971 - Found cast iron monument and updated ties.

May 27, 1975 - Found cast iron monument and updated ties.

August 12, 1977 - Found cast iron monument and updated ties.

June 12, 1980 - Found cast iron monument and updated ties.

June 2, 1986 - Found cast iron monument and updated ties.

October 1, 1989 - Found cast iron monument and updated ties.

August 1, 1990 - Found cast iron monument and updated ties.

June 27, 1995 - Found cast iron monument and updated ties.

July 27, 1999 - Found cast iron monument, established NAD 1983 (1996 adj.) Anoka County project coordinates by static GPS methods and updated ties.

May 19, 2000 - Found cast iron monument and set construction ties prior to road construction.

June 14, 2006 - Found cast iron monument and updated ties prior to road construction. Removed monument.

July 30, 2014 - Found cast iron monument missing. Set p.k. nail and verified position by static GPS methods.

July 31, 2014 - Found p.k. nail and replaced with a cast iron monument using static GPS methods. Verified position by VRS GPS methods and updated ties.

July 30, 2019 - Found cast iron monument and updated ties.

May 23, 2022 - Found cast iron monument, verified position by VRS GPS method and updated ties.