

CERTIFICATE OF LOCATION OF GOVERNMENT CORNER

County of Anoka

State of Minnesota

Northeast Corner of Sec. 5 Township 30 Range 23

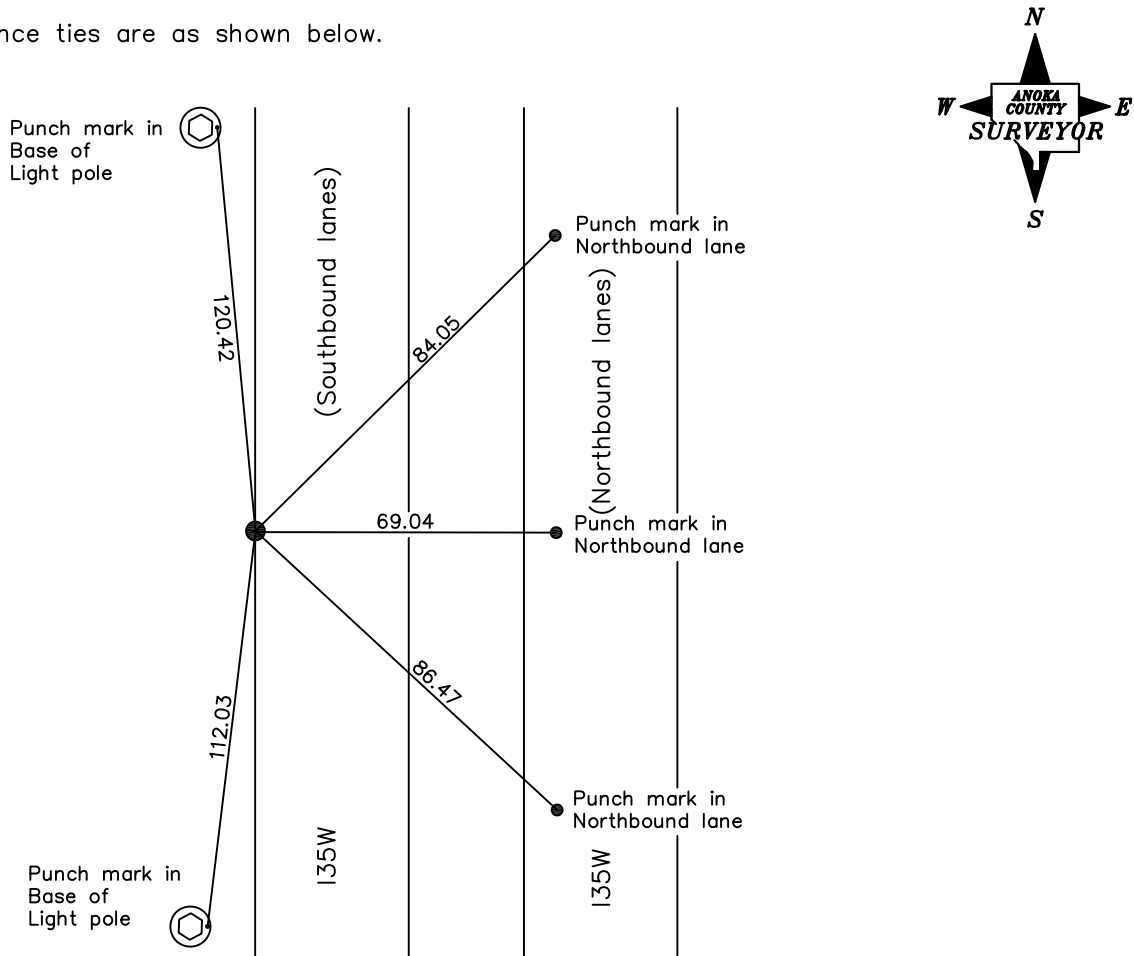
(RAMSEY COUNTY MONUMENT)

On the 2nd day of October, 1968, the described corner was evidenced by a granite monument

and to perpetuate the location of said corner, at the exact location thereof, a permanent marker was placed consisting of a 3" brass plug epoxied into a seam on the west edge of Southbound I35W

AND on the 3rd day of August, 1999, said permanent marker was not able to be found

Updated reference ties are as shown below.



Revised date

7/27/90
7/03/95
8/03/99

N.A.D. 1983 Coordinates
(1996 Adjustment)

County Project Coordinates
Northing <u>Not available</u>
Easting _____
Date _____

I hereby certify that this United States public land survey monument record is correct and complete to the best of my knowledge and belief.

_____ Date _____
 _____, Anoka County Surveyor
 Minnesota License Number _____